

LEGEND

- WORK AREA
- IMPACT ATTENUATORS, TEMPORARY (FULLY REDIRECTIVE, NARROW), TEST LEVEL 3
- TYPE III BARRICADE
- TYPE I OR II BARRICADE
- TEMPORARY CONCRETE BARRIER
- DRUM WITH STEADY BURN MONODIRECTIONAL LIGHT (PER HWY. STD. 701606)
- DIRECTION INDICATOR BARRICADE WITH STEADY BURN MONODIRECTIONAL LIGHT (PER HWY. STD. 701606)
- SIGN

G20-2
STA. 89+00.00
END CONSTRUCTION

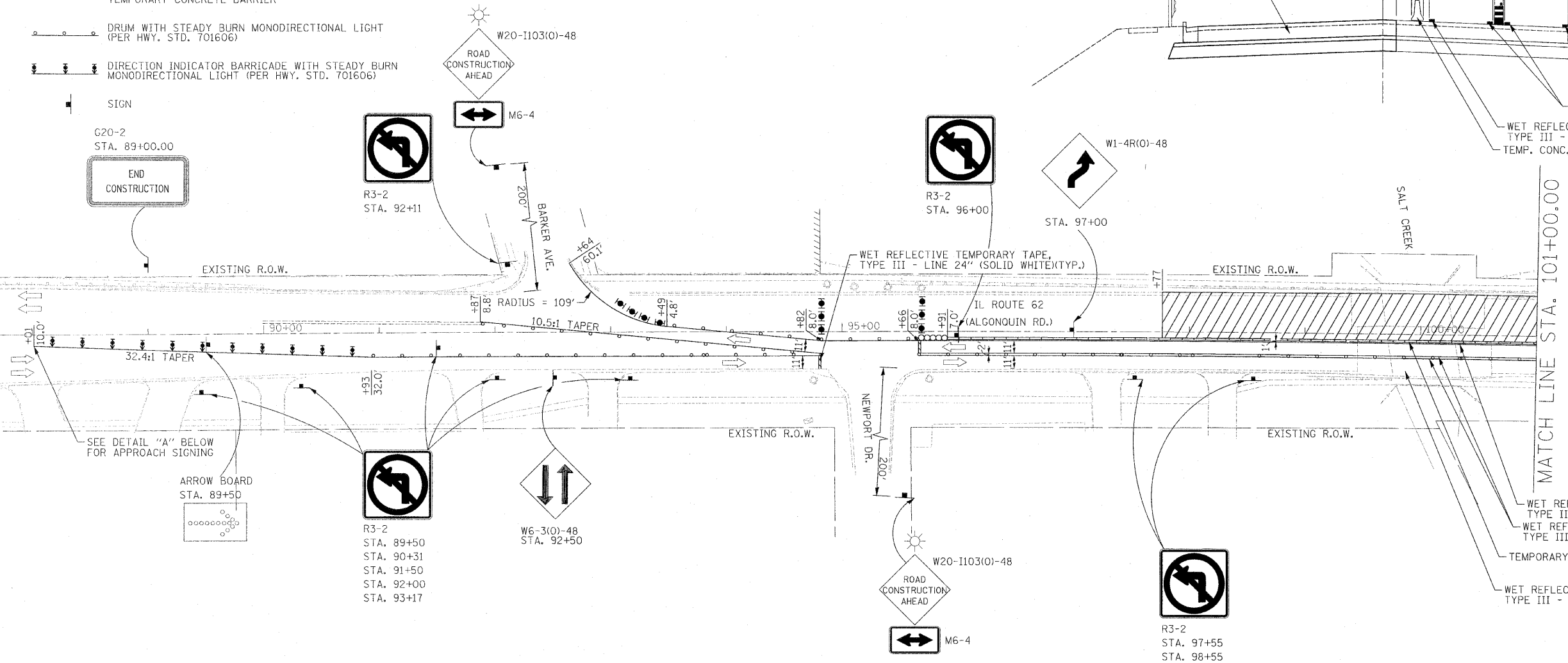
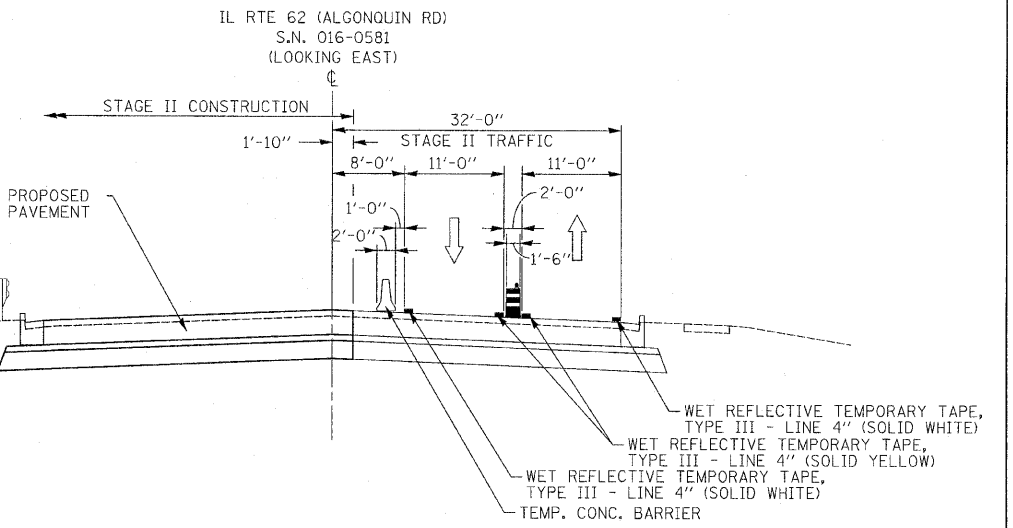
R3-2
STA. 92+11

W20-1103(O)-48
ROAD CONSTRUCTION AHEAD

M6-4

R3-2
STA. 96+00

W1-4R(O)-48
STA. 97+00



SEE DETAIL "A" BELOW FOR APPROACH SIGNING

ARROW BOARD
STA. 89+50

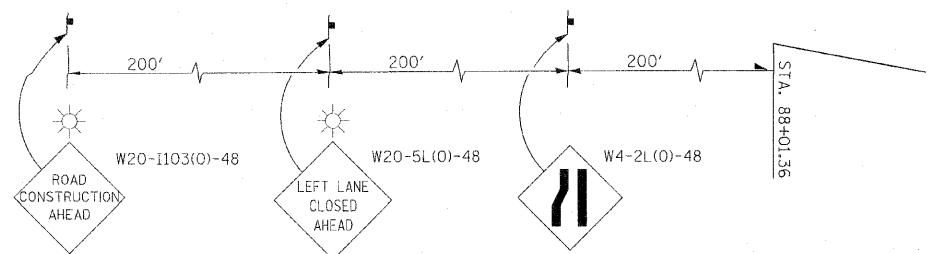
R3-2
STA. 89+50
STA. 90+31
STA. 91+50
STA. 92+00
STA. 93+17

W6-3(O)-48
STA. 92+50

W20-1103(O)-48
ROAD CONSTRUCTION AHEAD

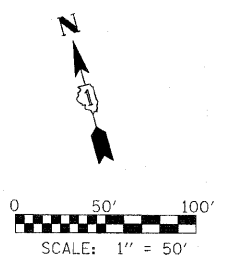
M6-4

R3-2
STA. 97+55
STA. 98+55



DETAIL "A"

- STAGE II CONSTRUCTION:**
- REMOVE CONFLICTING EXISTING PAVEMENT MARKING LINES, REFLECTORS AND SIGNS UNDER HIGHWAY STANDARD 701306.
 - SHIFT TRAFFIC TO EXISTING EB LANES, PROVIDING ONE 11' LANE IN EACH DIRECTION UNDER HIGHWAY STANDARD 701606 AND AS SHOWN IN THE PLANS.
 - UPON COMPLETION OF CONSTRUCTION AND REMOVAL OF TRAFFIC CONTROL, PROVIDE PROPOSED PAVEMENT MARKINGS AND MARKERS TO REVERT TO EXISTING MARKINGS CONFIGURATION, AND AS SHOWN IN THE PROPOSED PAVEMENT MARKING PLAN UNDER HIGHWAY STANDARD 701426.
- NOTES:**
- ACCESS TO BE MAINTAINED TO DRIVEWAYS SHOWN IN THE PLANS.



FILE NAME = #FILEL#	USER NAME = #USER#	DESIGNED - SEW	REVISED -	STATE OF ILLINOIS DEPARTMENT OF TRANSPORTATION	MAINTENANCE OF TRAFFIC PLAN - STAGE 2 IL ROUTE 62 (ALGONQUIN ROAD) OVER SALT CREEK	F.A.P. RTE. 339	SECTION 116-Y-2-BR-1	COUNTY COOK	TOTAL SHEETS 74	SHEET NO. 18	
	PLOT SCALE = #SCALE#	DRAWN - SEW	REVISED -			SCALE: 1" = 50'	SHEET NO. 1 OF 2 SHEETS	STA. 89+00.00 TO STA. 101+00.00	FED. ROAD DIST. NO. ILLINOIS	FED. AID PROJECT	CONTRACT NO. 60J00
	PLOT DATE = #DATE#	CHECKED - FML	REVISED -								
		DATE - 2/2010	REVISED -								