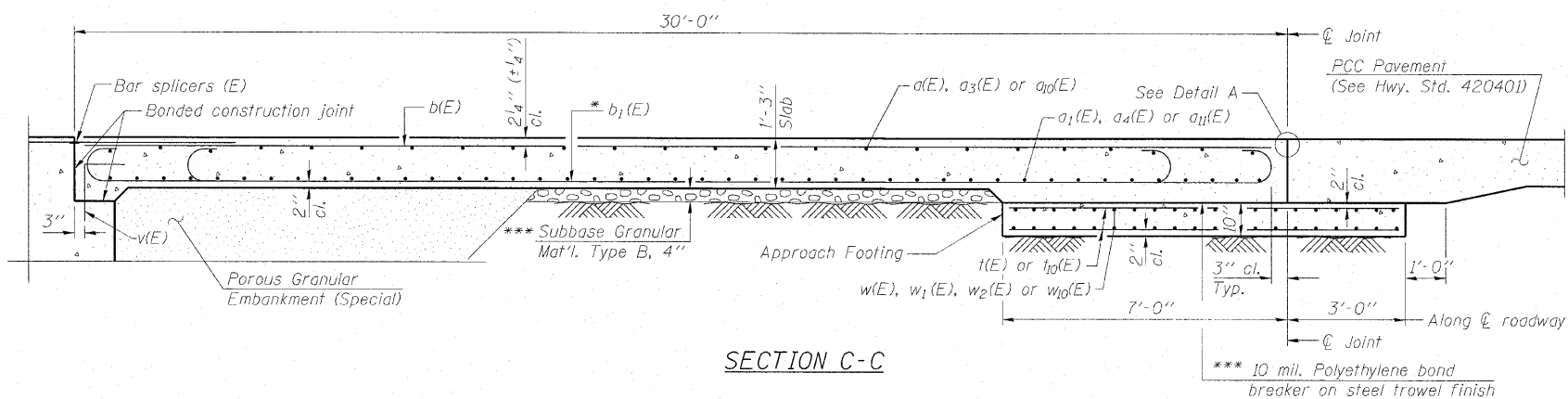
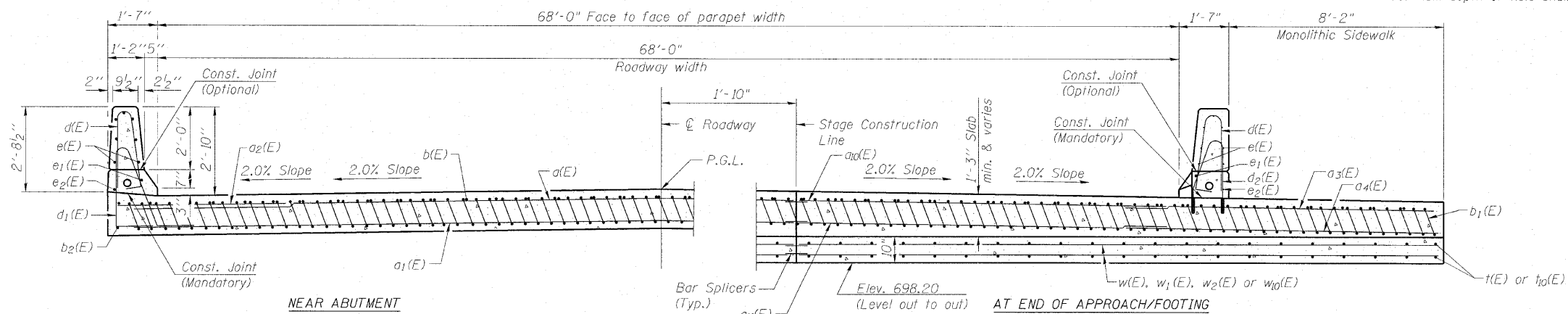


STATE OF ILLINOIS  
DEPARTMENT OF TRANSPORTATION

Notes:  
See sheet S9 of S27 for Detail A and View B-B.  
Approach slab and parapet concrete shall be paid for as Concrete Superstructure.  
Approach footing concrete shall be paid for as Concrete Structures.  
Reinforcement shall be paid for as Reinforcement Bars, Epoxy Coated.  
For v(E) bar details, see sheet S24 of S27.  
The approach footing maximum applied service bearing pressure ( $Q_{max}$ ) = 2.0 ksf.  
For bar splicer details, see sheet S25 of S27.  
Cost of excavation for approach footing included with Concrete Structures.  
For Porous Granular Embankment (Special) and drainage treatment details, see sheet S2 of S27.  
For additional parapet details, see sheet S16 of S27.



SECTION C-C



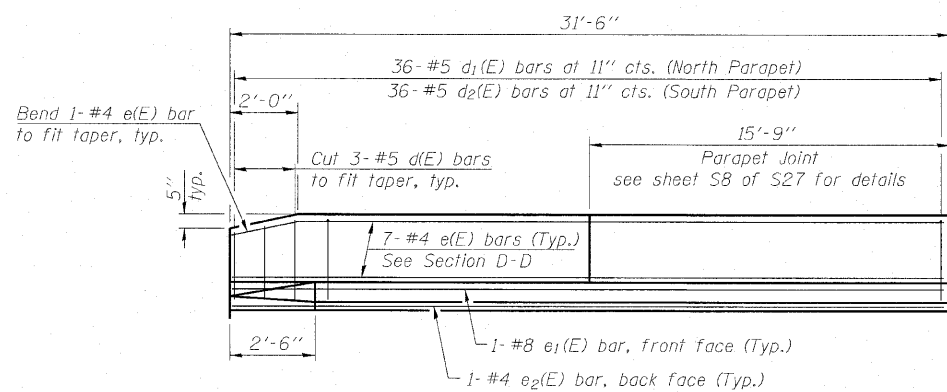
SECTION D-D

(See Plan for dimensions not shown)

Core and set #5  $d_2(E)$  bar according to Article 509.06 of the Standard Specifications. Cored holes shall be roughened or scored per manufacturer's recommendations. Maximum depth of hole shall not exceed 6".

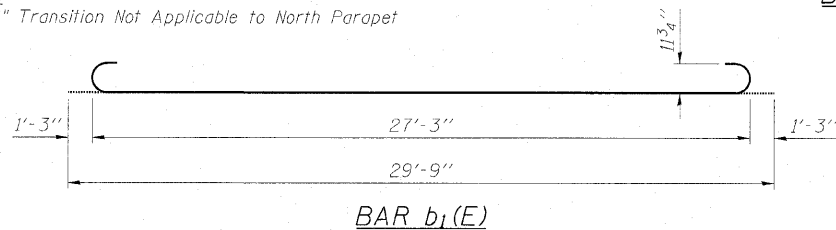
EAST APPROACH  
BILL OF MATERIAL

Bar	No.	Size	Length	Shape
a(E)	25	#4	37'-6"	—
a1(E)	46	#5	37'-6"	—
a2(E)	50	#6	6'-6"	—
a3(E)	25	#4	10'-9"	—
a4(E)	46	#5	11'-5"	—
a10(E)	25	#4	33'-10"	—
a11(E)	46	#5	33'-10"	—
b(E)	65	#4	29'-8"	—
b1(E)	191	#9	29'-9"	—
b2(E)	2	#4	29'-8"	—
d(E)	72	#5	5'-7"	—
d1(E)	36	#5	7'-11"	—
d2(E)	36	#5	4'-8"	—
e(E)	28	#4	15'-5"	—
e1(E)	2	#8	31'-2"	—
e2(E)	2	#4	31'-2"	—
t(E)	158	#4	9'-9"	—
t10(E)	6	#4	6'-9"	—
w(E)	40	#5	37'-6"	—
w1(E)	30	#5	7'-11"	—
w2(E)	14	#5	5'-11"	—
w10(E)	40	#5	33'-10"	—
Concrete Superstructure		Cu. Yd.	129.4	
Concrete Structures		Cu. Yd.	24.6	
Reinforcement Bars, Epoxy Coated		Pound	32,130	

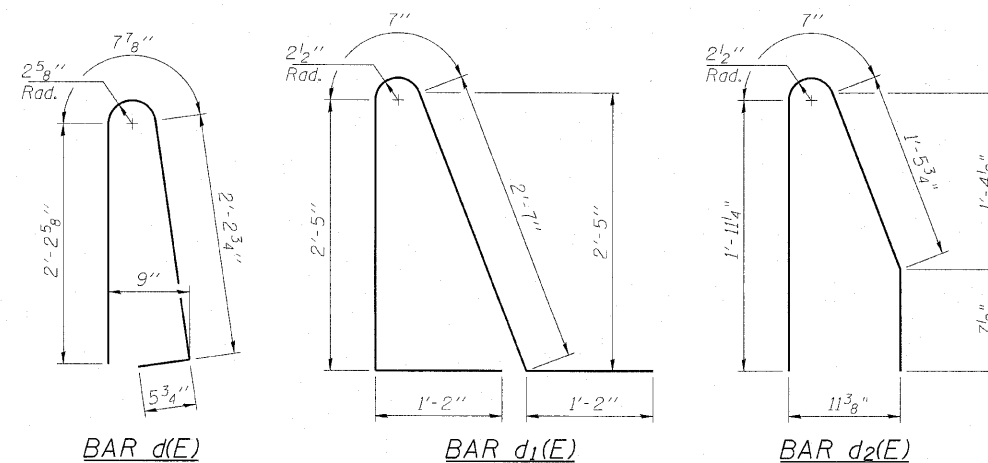


VIEW E-E

Note:  
2'-6" Transition Not Applicable to North Parapet



BAR b1(E)



BAR d(E)

BAR d1(E)

BAR d2(E)

\* Tilt #9  $b_1(E)$  bars as required to maintain clearance.  
\*\*\* Cost Included with Concrete Superstructure.

DESIGNED MAH
CHECKED JMH
DRAWN DR
CHECKED JMH

BA-R

11-1-09

**COLLINS ENGINEERS**  
123 N. WACKER DR., SUITE 300  
CHICAGO, IL 60606  
(312) 704-9300  
ILLINOIS PROFESSIONAL DESIGN FIRM LICENSE NO. 184-000933

SHEET NO. S10 OF S27 SHEETS	F.A.P. RTE. 339	SECTION 116-Y-2-BR-1	COUNTY COOK	TOTAL SHEETS 74	SHEET NO. 32
	CONTRACT NO. 60J00			ILLINOIS FED. AID PROJECT	

(Sheet 2 of 2)  
EAST BRIDGE APPROACH SLAB DETAILS  
STRUCTURE NO. 016-0581