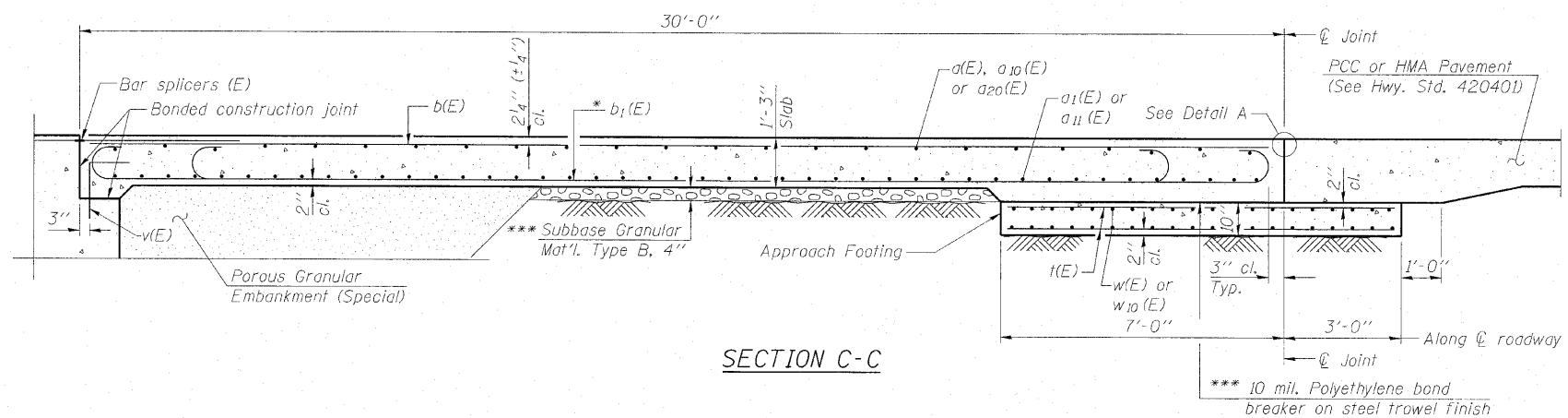
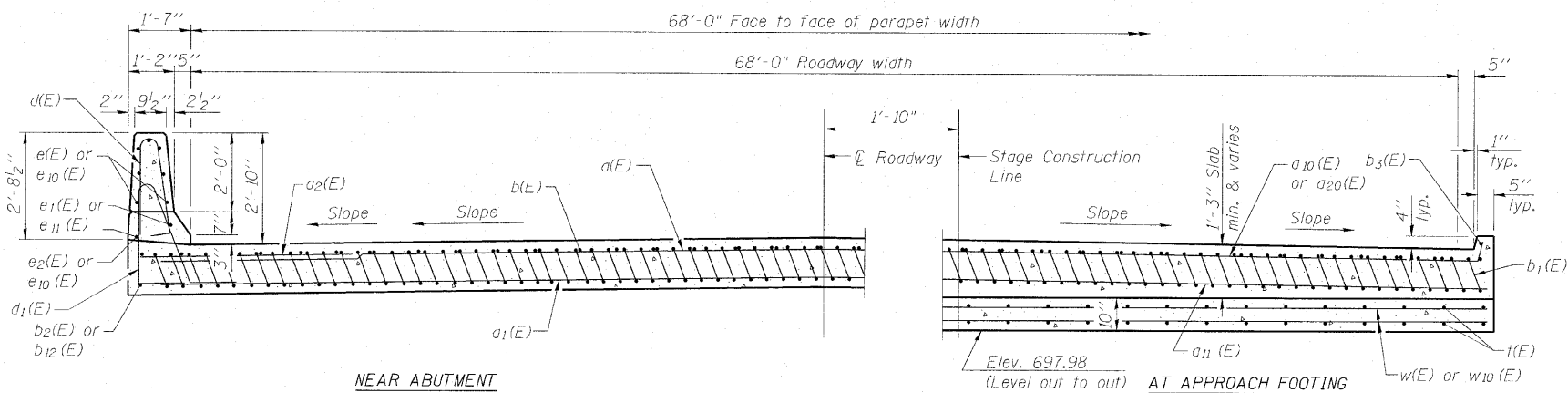


STATE OF ILLINOIS
DEPARTMENT OF TRANSPORTATION

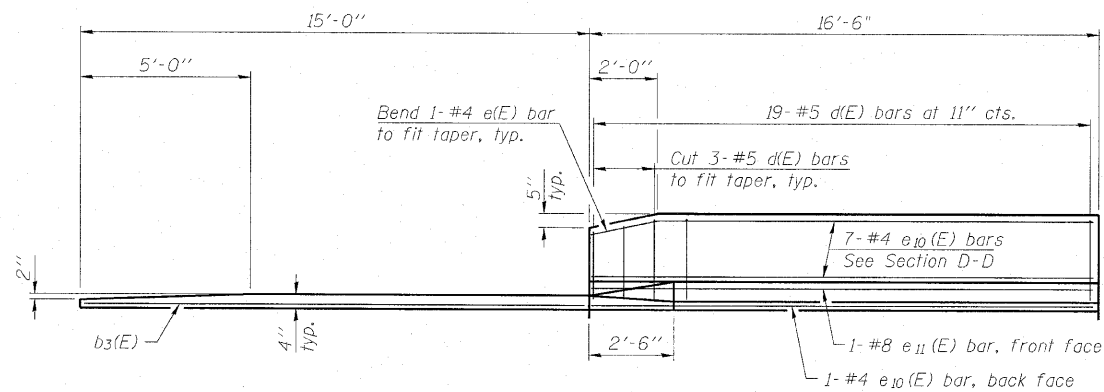


SECTION C-C



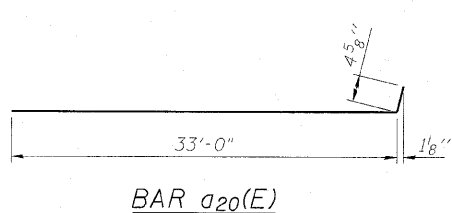
SECTION D-D

(See Plan for dimensions not shown)

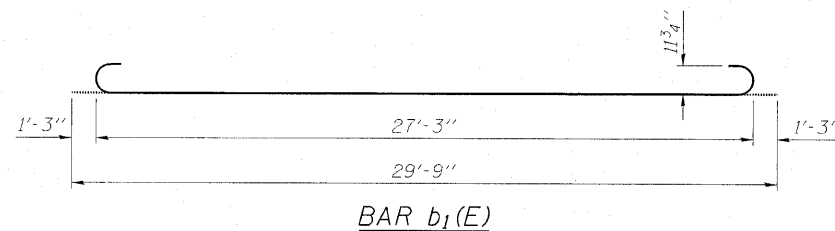


VIEW E-E

(See Sheet S10 of S27 for North Parapet Details)



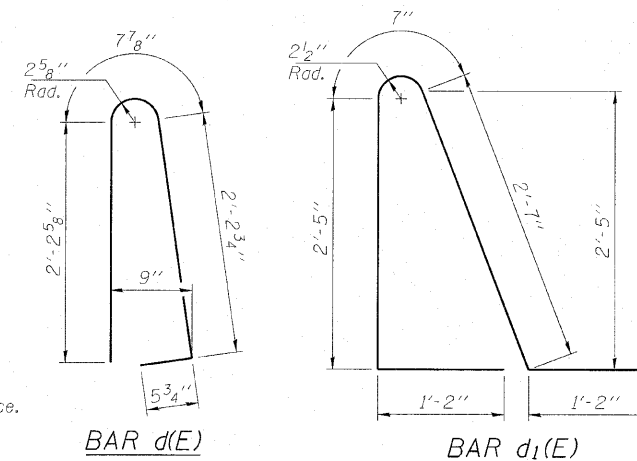
BAR a20(E)



BAR b1(E)

Notes:

- See sheet S11 of S27 for Detail A and View B-B.
- Approach slab and parapet concrete shall be paid for as Concrete Superstructure.
- Approach footing concrete shall be paid for as Concrete Structures.
- Reinforcement shall be paid for as Reinforcement Bars, Epoxy Coated.
- For v(E) bar details, see sheet S24 of S27.
- The approach footing maximum applied service bearing pressure (Qmax) = 2.0 ksf.
- For bar splicer details, see sheet S25 of S27.
- Cost of excavation for approach footing included with Concrete Structures.
- For Porous Granular Embankment (Special) and drainage treatment details, see sheet S2 of S27.
- For additional parapet details, see sheet S16 of S27.



BAR d(E)

BAR d1(E)

- * Tilt #9 b1(E) bars as required to maintain clearance.
- *** Cost included with Concrete Superstructure.

WEST APPROACH
BILL OF MATERIAL

Bar	No.	Size	Length	Shape
d(E)	25	#4	37'-6"	—
a1(E)	46	#5	37'-6"	—
a2(E)	38	#6	6'-6"	—
a10(E)	13	#4	33'-7"	—
a11(E)	46	#5	33'-2"	—
a20(E)	13	#4	33'-5"	—
b(E)	58	#4	29'-8"	—
b1(E)	172	#9	29'-9"	—
b2(E)	1	#4	29'-8"	—
b3(E)	1	#4	14'-8"	—
b12(E)	2	#4	14'-8"	—
d1(E)	55	#5	7'-11"	—
e(E)	14	#4	15'-5"	—
e1(E)	1	#8	31'-2"	—
e2(E)	1	#4	31'-2"	—
e10(E)	8	#4	16'-2"	—
e11(E)	1	#8	16'-2"	—
t(E)	144	#4	9'-9"	—
w(E)	40	#5	37'-6"	—
w10(E)	40	#5	33'-2"	—
Concrete Superstructure		Cu. Yd.	113.2	
Concrete Structures		Cu. Yd.	22.2	
Reinforcement Bars, Epoxy Coated		Pound	28,505	

(Sheet 2 of 2)

WEST BRIDGE APPROACH SLAB DETAILS
STRUCTURE NO. 016-0581

DESIGNED MAH
CHECKED JMH
DRAWN DR
CHECKED JMH

BA-R

11-1-09

COLLINS ENGINEERS
123 N. WACKER DR., SUITE 300 CHICAGO, IL 60606 (312) 704-9300
ILLINOIS PROFESSIONAL DESIGN FIRM LICENSE NO. 184-000993

SHEET NO. S12 OF S27 SHEETS	F.A.P. RTE.	SECTION	COUNTY	TOTAL SHEETS	SHEET NO.
	339	116-Y-2-BR-1	COOK	74	32B
				CONTRACT NO. 60J00	
ILLINOIS FED. AID PROJECT					