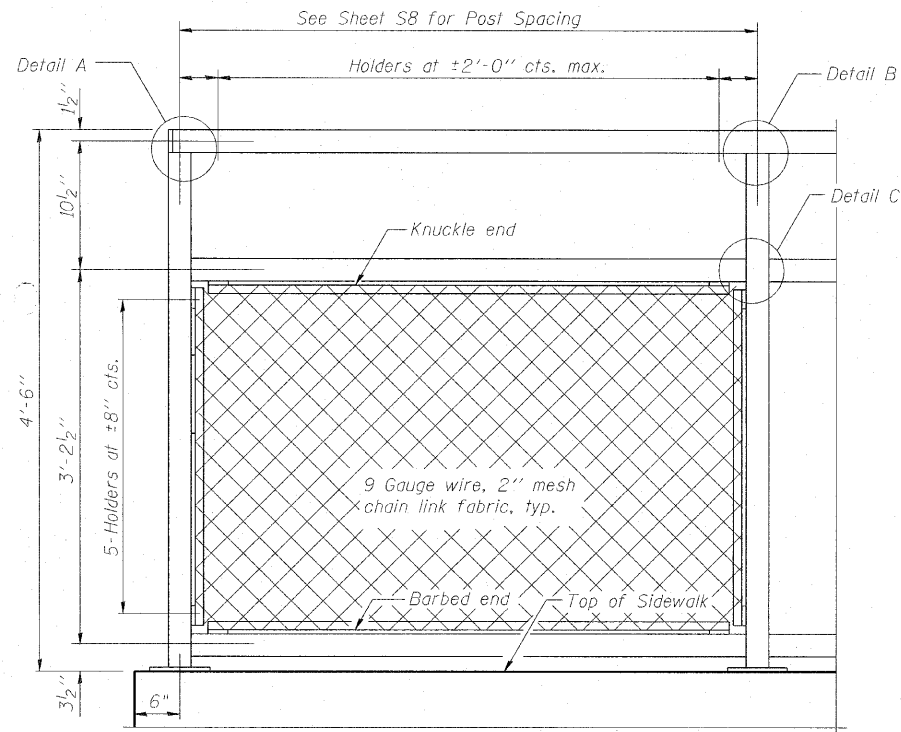
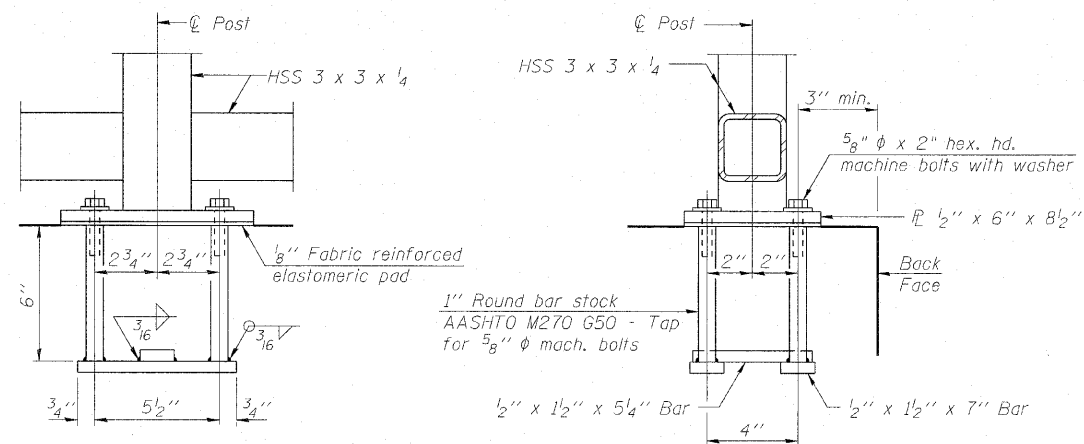
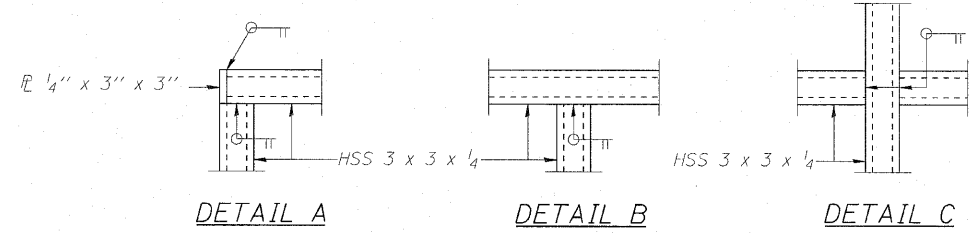


STATE OF ILLINOIS
DEPARTMENT OF TRANSPORTATION



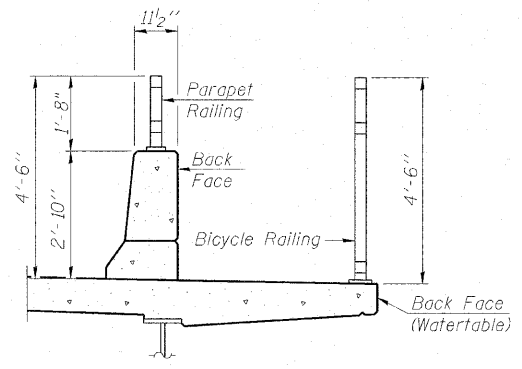
BICYCLE RAILING



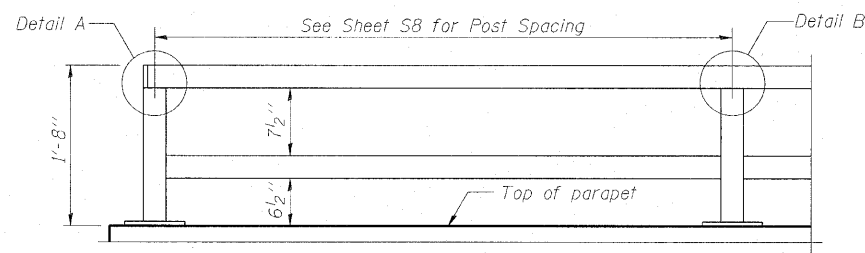
ANCHOR BOLT DETAILS

In lieu of the cast-in-place anchor device shown, the Contractor has the option of drilling and setting 5/8" φ anchor rods according to Article 509.06 of the Standard Specifications. Embedment shall be according to the manufacturer's specifications.

Note:
All steel rail elements shall be galvanized according to Article 509.05 of the Standard Specifications.



SECTION THRU DECK

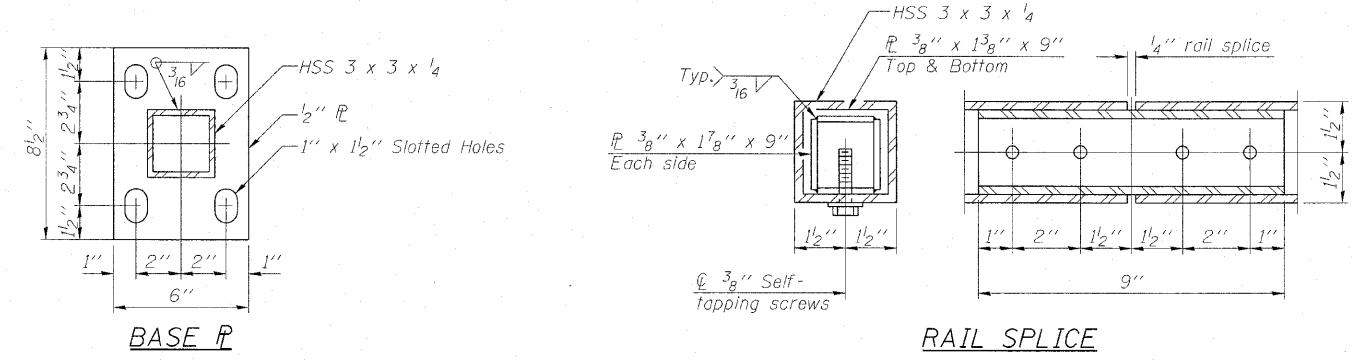


**PARAPET RAILING
ELEVATION**

(Inside Face of Two Element Rail)

BILL OF MATERIAL

Item	Unit	Quantity
Bicycle Railing	Foot	120
Parapet Railing	Foot	120



BASE PLATE

RAIL SPLICE

**BICYCLE RAILING
STRUCTURE NO. 016-0581**

DESIGNED MAH
CHECKED JMH
DRAWN DR
CHECKED JMH

(10'-0" Maximum Post Spacing)

COLLINS ENGINEERS <small>ILLINOIS PROFESSIONAL DESIGN FIRM LICENSE NO. 184-000993</small>	123 N. WACKER DR., SUITE 300 CHICAGO, IL 60606 (312) 704-9300	SHEET NO. S13 OF S27 SHEETS	F.A.P. RTE. 339	SECTION 116-Y-2-BR-1	COUNTY COOK	TOTAL SHEETS 74	SHEET NO. 33
		CONTRACT NO. 60J00			ILLINOIS FED. AID PROJECT		