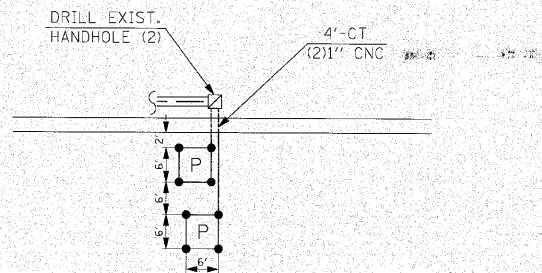


SCHEDULE OF INTERCONNECT QUANTITIES

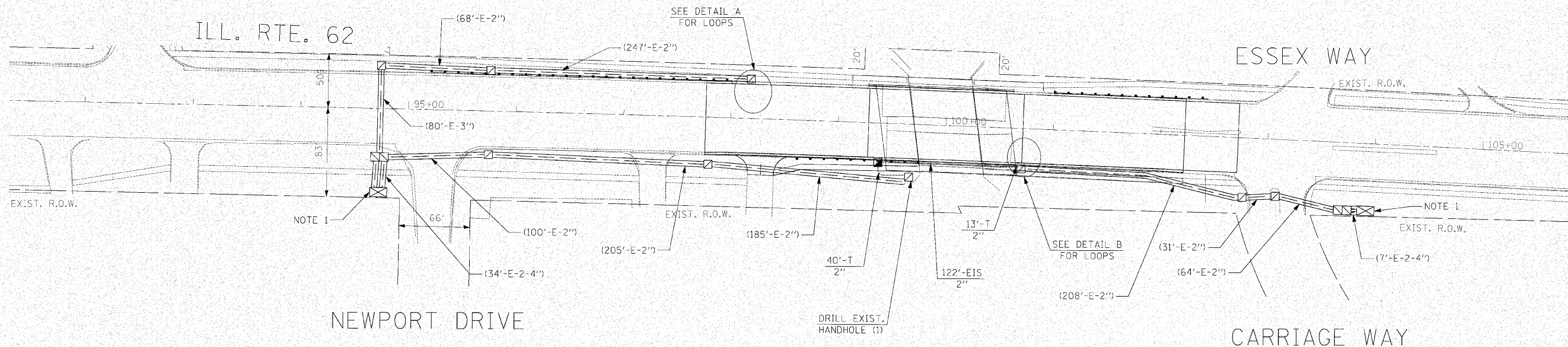
QUANTITY	UNIT	ITEM
53	FOOT	CONDUIT IN TRENCH, 2" DIA., GALVANIZED STEEL
122	FOOT	CONDUIT EMBEDDED IN STRUCTURE, 2" DIA., PVC
53	FOOT	TRENCH AND BACKFILL FOR ELECTRICAL WORK
6	EACH	DRILL EXISTING HANDHOLE
1992	FOOT	REMOVE ELECTRIC CABLE FROM CONDUIT
1023	FOOT	ELECTRIC CABLE IN CONDUIT, TRACER NO. 14 1C
128	FOOT	PREFORMED DETECTOR LOOP
1049	FOOT	FIBER OPTIC CABLE IN CONDUIT, NO. 62.5/125, MM12F SM12F

NOTE 1: REMOVE EXISTING FIBER OPTIC CABLE (1009') AND TRACER CABLE (983') BETWEEN NEWPORT DRIVE AND CARRIAGE WAY. INSTALL NEW FIBER OPTIC CABLE AND TRACER CABLE AS SHOWN IN PLANS AND AS DIRECTED BY THE ENGINEER.

NOTE 2: THE EXISTING "ELECTRIC CABLE IN CONDUIT, LEAD-IN, NO. 14 1 PAIR" SHALL BE REUSED FOR THE NEW PREFORMED DETECTOR LOOPS.

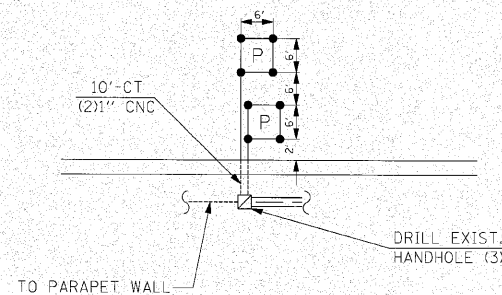


(NOT TO SCALE)
DETAIL "A"



INTERCONNECT PLAN LEGEND

CONDUIT EMBEDDED IN STRUCTURE (EIS) PROPOSED EXISTING



(NOT TO SCALE)
DETAIL "B"

THE TRAFFIC SIGNAL CONTROL EQUIPMENT FOR THIS PROJECT SHALL BE "ECONOLITE" TO MATCH THE EXISTING ADJACENT SYSTEM.

FILE NAME =	USER NAME = \$USER\$	DESIGNED - PKG	REVISED -	STATE OF ILLINOIS DEPARTMENT OF TRANSPORTATION	PROPOSED INTERCONNECT PLAN ILL. RTE. 62 (ALGONQUIN RD.) FROM NEWPORT DRIVE TO CARRIAGE WAY	F.A.P. RTE. 339	SECTION 116-Y-2-BR-1	COUNTY COOK	TOTAL SHEETS 74	SHEET NO. 59	
\$FILEL\$	PLOT SCALE = \$SCALE\$	DRAWN - MAA, EA	REVISED -			SCALE: 1"=50'		SHEET NO. OF SHEETS STA. TO STA.		CONTRACT NO. 60J00	
	PLOT DATE = \$DATE\$	CHECKED - PKG	REVISED -			ILLINOIS FED. AID PROJECT					
		DATE - 6/23/2010	REVISED -								