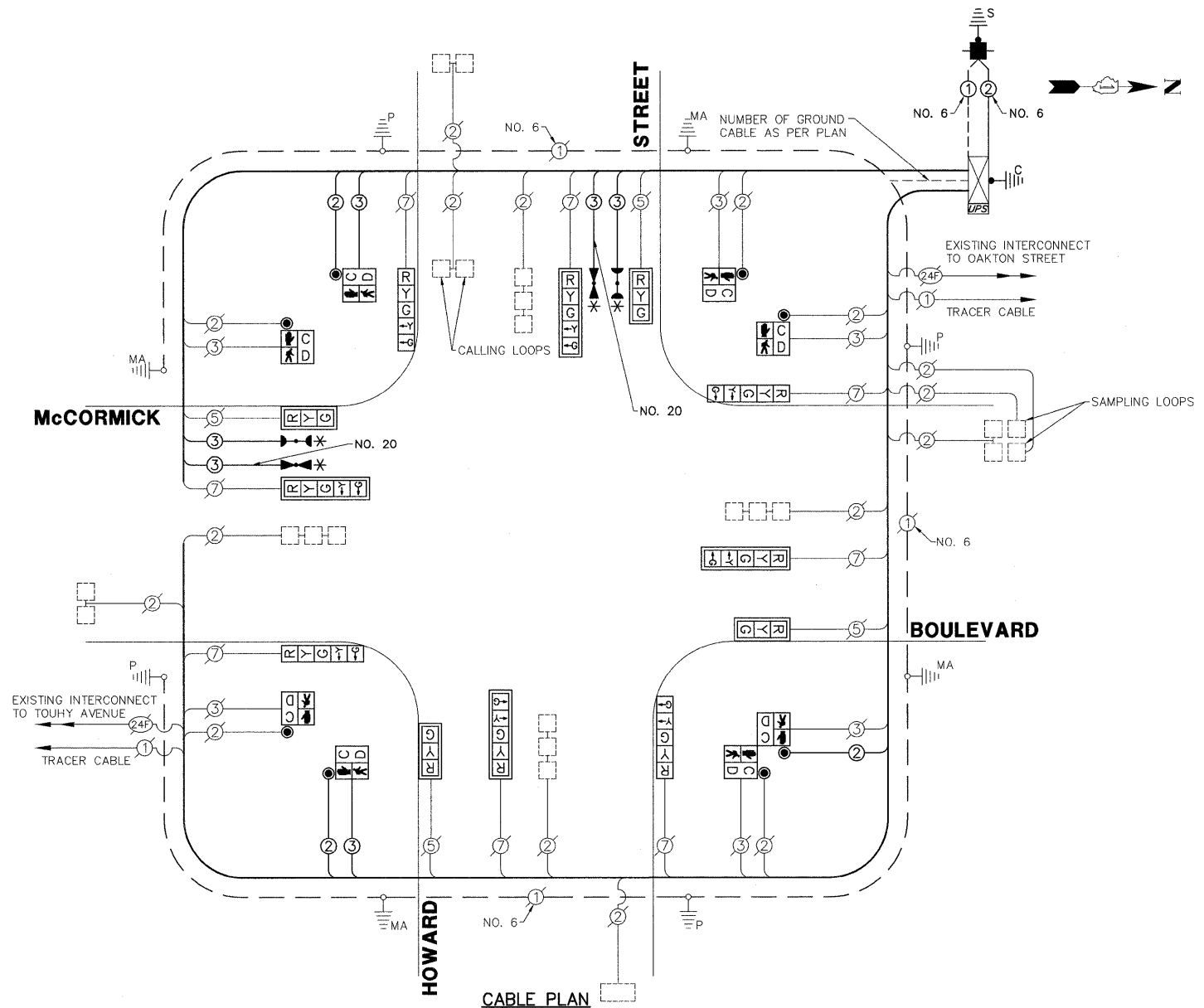


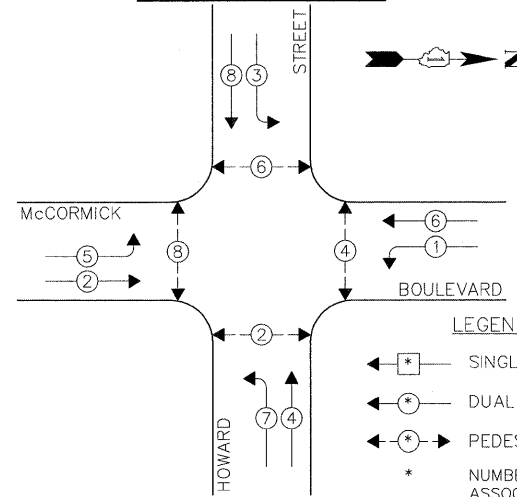
SCHEDULE OF QUANTITIES
McCORMICK BOULEVARD AT HOWARD STREET

NO.	QUANT.	UNIT
1.	5	CU YD EARTH EXCAVATION
2.	20	SQ YD AGGREGATE BASE COURSE, TYPE B 4"
3.	850	SQ FT PORTLAND CEMENT CONCRETE SIDEWALK 5 INCH
4.	108	SQ FT DETECTABLE WARNINGS
5.	650	SQ FT SIDEWALK REMOVAL
6.	120	FOOT COMBINATION CURB AND GUTTER REMOVAL AND REPLACEMENT
7.	0.05	L SUM MOBILIZATION
8.	0.05	L SUM TRAFFIC CONTROL AND PROTECTION, STANDARD 701501
9.	0.05	L SUM TRAFFIC CONTROL AND PROTECTION, STANDARD 701606
10.	0.05	L SUM TRAFFIC CONTROL AND PROTECTION, STANDARD 701701
11.	0.05	L SUM TRAFFIC CONTROL AND PROTECTION, STANDARD 701801
12.	678	FOOT THERMOPLASTIC PAVEMENT MARKING - LINE 12"
13.	336	SQ FT THERMOPLASTIC PAVEMENT MARKING REMOVAL
14.	1	EACH MAINTENANCE OF EXISTING TRAFFIC SIGNAL INSTALLATION
15.	429	FOOT ELECTRIC CABLE IN CONDUIT, SIGNAL NO. 14 2C
16.	766	FOOT ELECTRIC CABLE IN CONDUIT, SIGNAL NO. 14 3C
17.	47	FOOT ELECTRIC CABLE IN CONDUIT, SERVICE, NO. 6 2 C
18.	3	EACH TRAFFIC SIGNAL POST, GALVANIZED STEEL 16 FT.
19.	4	EACH SIGNAL HEAD, LED, 1-FACE, 3-SECTION, MAST-ARM MOUNTED
20.	4	EACH SIGNAL HEAD, LED, 1-FACE, 5-SECTION, BRACKET MOUNTED
21.	4	EACH SIGNAL HEAD, LED, 1-FACE, 5-SECTION, MAST-ARM MOUNTED
22.	6	EACH PEDESTRIAN SIGNAL HEAD, LED, 1-FACE, BRACKET MOUNTED WITH COUNTDOWN TIMER
23.	1	EACH PEDESTRIAN SIGNAL HEAD, LED, 2-FACE, BRACKET MOUNTED WITH COUNTDOWN TIMER
24.	8	EACH TRAFFIC SIGNAL BACKPLATE, LOUVERED, ALUMINUM
*25.	2	EACH LIGHT DETECTOR
*26.	1	EACH LIGHT DETECTOR AMPLIFIER
27.	8	EACH PEDESTRIAN PUSH-BUTTON
28.	503	FOOT REMOVE ELECTRIC CABLE FROM CONDUIT
29.	1	EACH REMOVE EXISTING TRAFFIC SIGNAL EQUIPMENT
30.	1	EACH SERVICE INSTALLATION - POLE MOUNTED
31.	1	EACH UNINTERRUPTIBLE POWER SUPPLY
32.	34	FOOT ELECTRIC CABLE IN CONDUIT, GROUNDING, NO. 6 1C
*33.	319	FOOT ELECTRIC CABLE IN CONDUIT NO. 20 3/C, TWISTED, SHIELDED

* 100% OF THE COST TO THE VILLAGE OF SKOKIE

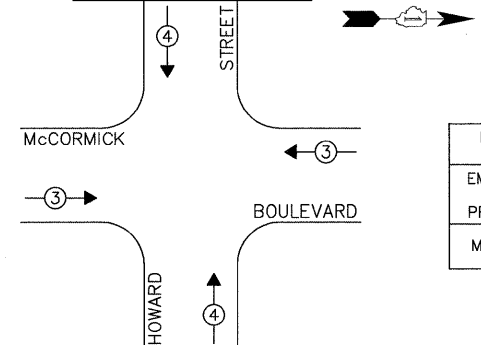


EXISTING CONTROLLER SEQUENCE



EXISTING PHASE DESIGNATION DIAGRAM

PROPOSED EMERGENCY VEHICLE PREEMPTION SEQUENCE



PROPOSED EMERGENCY VEHICLE PREEMPTORS	
EMERGENCY VEHICLE PREEMPTOR	3 4
MOVEMENT	==

I.D.O.T. TRAFFIC SIGNAL INSTALLATION ELECTRICAL SERVICE REQUIREMENTS					TOTAL WATTAGE
TYPE	NO. LAMPS	INCAND.	WATTAGE	L.E.D. % OPERATION	
SIGNAL (RED)	12	135	17	0.50	102.0
SIGNAL (YELLOW)	12	135	25	0.25	30.0
SIGNAL (GREEN)	12	135	15	0.25	72.0
ARROW	16	135	12	0.10	19.2
PED. SIGNAL	8	90	25	1.00	200.0
CONTROLLER	1	-	100	1.00	100.0
LUMINAIRE	-	-	250	0.50	-
L.E.D. ST. NAME SIGN	-	-	64	0.50	-
VIDEO SYSTEM	-	-	150	1.00	-
BATTERY BACKUP	1	-	25	1.00	25.0
ILLUMINATED SIGN	-	-	25	0.05	-
TOTAL =					548.2

ENERGY COSTS - BILLED TO: IDOT - DISTRICT 1
(ADDRESS) 201 W. CENTER COURT
(ADDRESS) SCHAUMBURG, IL 60196
ENERGY SUPPLY - CONTACT: LARRY SHANK
PHONE: (847) 816-5465
COMPANY: COM-ED

THE TRAFFIC SIGNAL CONTROL EQUIPMENT FOR THIS PROJECT SHALL BE "ECONOLITE" TO MATCH THE EXISTING ADJACENT SYSTEM.

FILE NAME = 4085.867-872-CABLE.dwg	USER NAME = ZACH WALLSTEN	DESIGNED - JRD	REVISED -
		DRAWN - MEM	REVISED -
		CHECKED - KLB	REVISED -
		DATE - 10/29/2010	REVISED -

**STATE OF ILLINOIS
DEPARTMENT OF TRANSPORTATION**

**SCHEDULE OF QUANTITIES, CABLE PLAN, PHASE DESIGNATION
DIAGRAM, & EMERGENCY VEHICLE PREEMPTION SEQUENCE
McCORMICK BOULEVARD AT HOWARD STREET**

SCALE N.A.	SHEET NO. OF SHEETS	STA. TO STA.
------------	---------------------	--------------

FAP. RTE. VARIES	SECTION 2010-006TS	COUNTY COOK	TOTAL SHEETS 58	SHEET NO. 17
CONTRACT #: 60K24			GHA #4085.867	
ILLINOIS FED. AID PROJECT				