

**STATE OF ILLINOIS**  
**DEPARTMENT OF TRANSPORTATION**  
**DIVISION OF HIGHWAYS**

F.A. RTE.	SECTION	COUNTY	TOTAL SHEETS	SHEET NO.
VAR	2010-063-I	WILL	10	1
FED. ROAD DIST. NO.	ILLINOIS	CONTRACT NO. 60L44		

FOR INDEX OF SHEETS, SEE SHEET NO. 2

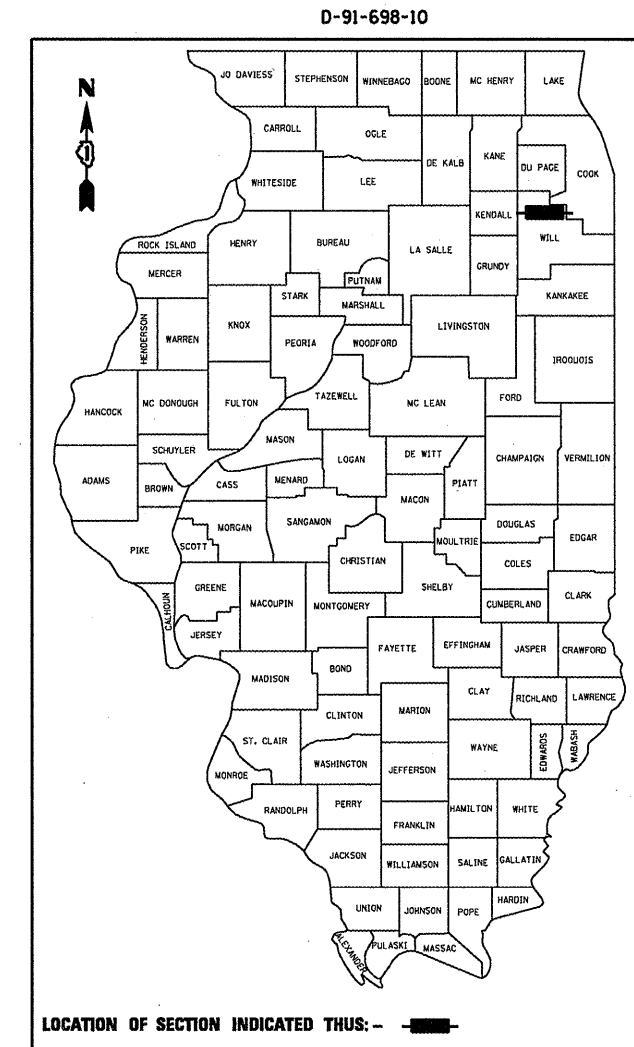
**IMPROVEMENTS ARE LOCATED  
 IN THE CITY OF JOLIET.**

**PROPOSED  
 HIGHWAY PLANS**

**VARIOUS ROUTES  
 VARIOUS MOVEABLE BRIDGES  
 SECTION: 2010-063-I  
 BRIDGE CLEANING  
 WILL COUNTY  
 C-91-698-10**

<b>LOC 1</b>	<b>SN 099-0239</b>
<b>LOC 2</b>	<b>SN 099-0101</b>
<b>LOC 3</b>	<b>SN 099-0166</b>
<b>LOC 4</b>	<b>SN 099-9904</b>
<b>LOC 5</b>	<b>SN 099-9903</b>

**FOR LOCATIONS MAP SEE SHEET 4**



**J.U.L.I.E.**  
**JOINT UTILITY LOCATION INFORMATION FOR EXCAVATION**  
 1-800-892-0123 OR 811

**PROJECT ENGINEER ROBERT BORO (847) 705-4178**  
**PROJECT MANAGER ISSAM RAYYAN**

**CONTRACT NO. 60L44**

**STATE OF ILLINOIS**  
**DEPARTMENT OF TRANSPORTATION**  
**DIVISION OF HIGHWAYS**

SUBMITTED Nov 4 20 10  
  
 DEPUTY DIRECTOR OF HIGHWAYS, REGION ENGINEER

Dec 10 20 10  
Scott E. Still *PE*  
 acting ENGINEER OF DESIGN AND ENVIRONMENT

Dec 10 20 10  
Christine M. Reed *PE*  
 DIRECTOR OF HIGHWAYS, CHIEF ENGINEER

**PRINTED BY THE AUTHORITY  
 OF THE STATE OF ILLINOIS**

## INDEX OF SHEETS

- 1 TITLE SHEET
- 2 INDEX OF SHEETS, STATE STANDARDS & GENERAL NOTES
- 3 SUMMARY OF QUANTITIES
- 4 LOCATION MAP
- 5 BRIDGE PLANS LOCATION 1 (SN 099-0239)
- 6 BRIDGE PLANS LOCATION 2 (SN 099-0101)
- 7 BRIDGE PLANS LOCATION 3 (SN 099-0166)
- 8 BRIDGE PLANS LOCATION 4 (SN 099-9904)
- 9 BRIDGE PLANS LOCATION 5 (SN 099-9903)
- 10 ARTERIAL ROAD INFORMATION SIGN (TC-22)

## STATE STANDARDS

- 701301-04 LANE CLOSURE, 2L, 2W, SHORT TIME OPERATIONS
- 701501-06 URBAN LANE CLOSURE, 2L, 2W, UNDIVIDED
- 701601-07 URBAN LANE CLOSURE, MULTILANE, 1W OR 2W WITH NONTRAVERSABLE MEDIAN
- 701901-01 TRAFFIC CONTROL DEVICES

## GENERAL NOTES

BEFORE STARTING ANY EXCAVATION, THE CONTRACTOR SHALL CALL "J.U.L.I.E." AT (800) 892-0123 OR 811 FOR FIELD LOCATIONS OF BURIED ELECTRIC, TELEPHONE AND GAS UTILITIES. 48 HOUR NOTIFICATION IS REQUIRED.

THE CONTRACTOR SHALL COORDINATE CONSTRUCTION ACTIVITIES WITH UTILITY COMPANIES, CITY OF JOLIET.

THE CONTRACTOR WILL NOT BE ALLOWED TO SET UP A YARD OR FIELD OFFICE ON STATE PROPERTY WITHOUT WRITTEN PERMISSION FROM THE DEPARTMENT.

IT SHALL BE THE CONTRACTOR'S RESPONSIBILITY TO VERIFY ALL DIMENSIONS AND CONDITIONS EXISTING IN THE FIELD PRIOR TO CONSTRUCTION AND ORDERING OF MATERIALS.

THE CONTRACTOR SHALL CONTACT THE DISTRICT ONE TRAFFIC CONTROL SUPERVISOR AT (847)705-4470 A MINIMUM OF 72 HOURS IN ADVANCE OF BEGINNING WORK.

THESE PLANS HAVE BEEN PREPARED FROM NOTES RECEIVED FROM THE BUREAU OF MAINTENANCE, BRIDGE INSPECTORS.

THE CONTRACTOR SHALL BE REQUIRED TO PROVIDE ACCESS TO ABUTTING PROPERTY AT ALL TIMES DURING THE CONSTRUCTION OF THIS PROJECT.

DO NOT SCALE PLANS FOR CONSTRUCTION DIMENSIONS.

CONTRACTOR SHALL PROVIDE SAFE TEMPORARY ACCESS TO THE TENDER HOUSES THROUGHOUT CONSTRUCTION PERIOD.

CONTRACTOR SHALL REMOVE OR FIRMLY ATTACH ANY TRAFFIC CONTROL DEVICES TO THE BASCULE BRIDGE DECK THROUGHOUT THE DURATION OF THE IMPROVEMENT, SO THEY WILL NOT FALL OFF THE DECK WHEN THE BRIDGE SPANS ARE RAISED.

FILE NAME =	USER NAME = nathanbc	DESIGNED -	REVISED -	<b>STATE OF ILLINOIS DEPARTMENT OF TRANSPORTATION</b>	INDEX OF SHEETS STATE STANDARDS GENERAL NOTES	F.A. RTE.	SECTION	COUNTY	TOTAL SHEETS	SHEET NO.
c:\pki\work\pki\dos\nathanbc\d0218642\016	810-sht-plan.dgn	DRAWN -	REVISED -			VAR	2010-063-1	WILL	10	2
PLOT SCALE = 100.0000' / IN.	CHECKED -	REVISED -	REVISED -			CONTRACT NO. 60L44				
PLOT DATE = 11/4/2010	DATE -	REVISED -	REVISED -			SCALE:	SHEET NO. OF SHEETS STA. TO STA.	FED. ROAD DIST. NO. 1   ILLINOIS FED. AID PROJECT		

F.A. RTE.	SECTION	COUNTY	TOTAL SHEETS	SHEET NO.
VAR	2010-063-1	WILL	10	3
FED. ROAD DIST. NO. 1		ILLINOIS	BRIDGE IMPROVEMENT	

CONTRACT 60L44

SUMMARY OF QUANTITIES			URBAN 100% STATE  TOTAL QUANTITIES	CONSTRUCTION TYPE CODE 0014				
CODE NO	ITEM	UNIT		LOC 1 099-0239	LOC 2 099-0101	LOC 3 099-0166	LOC 4 099-9904	LOC 5 099-9903
59200101	BRIDGE WASHING NO. 1	EACH	1	1				
59200102	BRIDGE WASHING NO. 2	EACH	1		1			
59200103	BRIDGE WASHING NO. 3	EACH	1			1		
59200104	BRIDGE WASHING NO. 4	EACH	1				1	
59200105	BRIDGE WASHING NO. 5	EACH	1					1
67100100	MOBILIZATION	L SUM	1	0.2	0.2	0.2	0.2	0.2
70102620	TRAFFIC CONTROL AND PROTECTION, STANDARD 701501	L SUM	1	0.33			0.33	0.34
70102630	TRAFFIC CONTROL AND PROTECTION, STANDARD 701601	L SUM	1		0.5	0.5		
Z0030850	TEMPORARY INFORMATION SIGNING	SQ FT	205.6	51.4	25.7	25.7	51.4	51.4

REVISIONS	
NAME	DATE

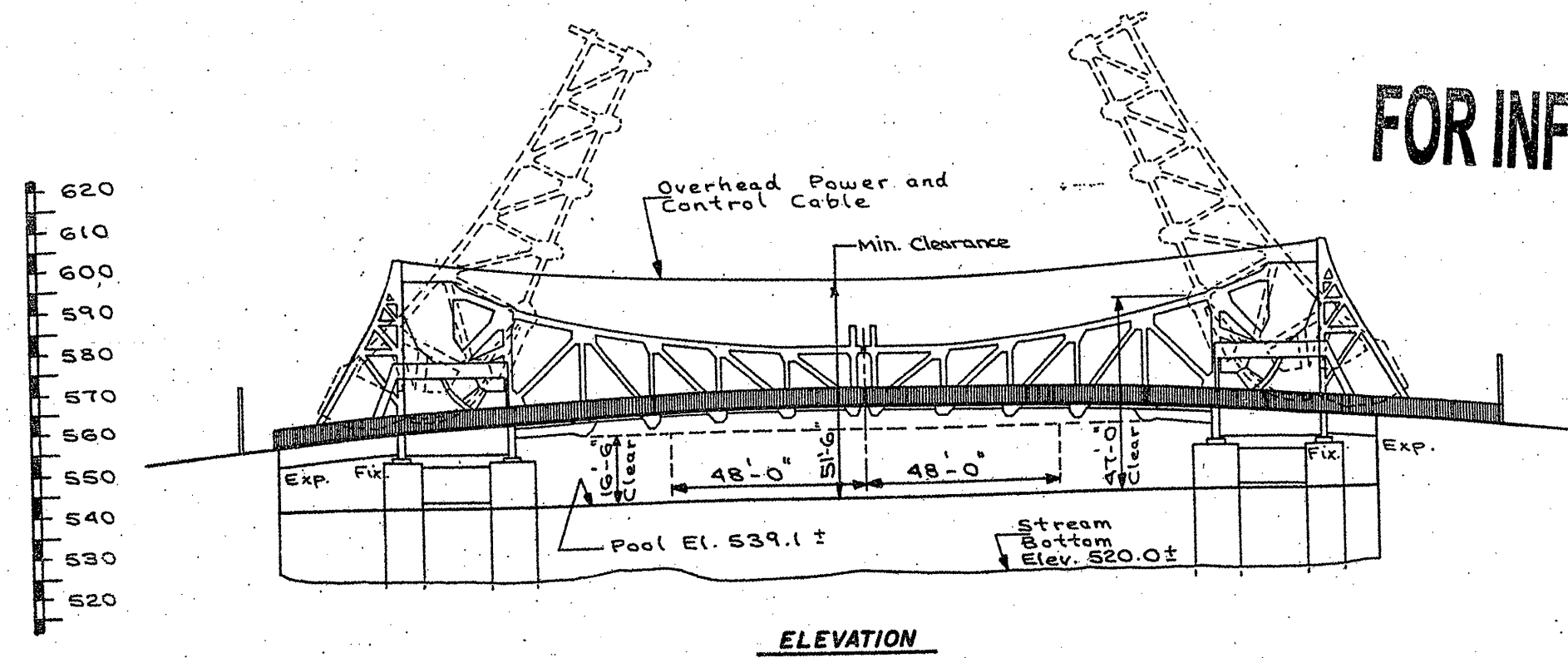
ILLINOIS DEPARTMENT OF TRANSPORTATION  
SUMMARY OF QUANTITIES

PLOT DATE: 11/4/2010

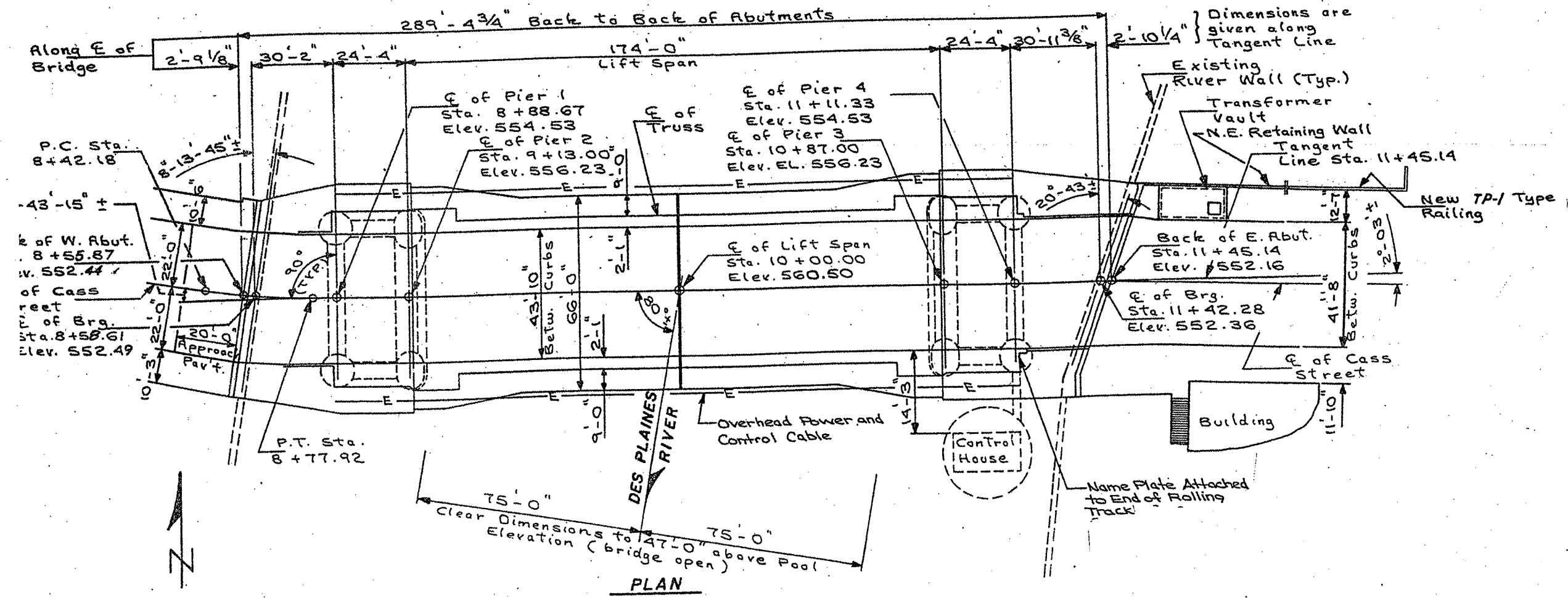




# FOR INFORMATION ONLY



**ELEVATION**



**PLAN**

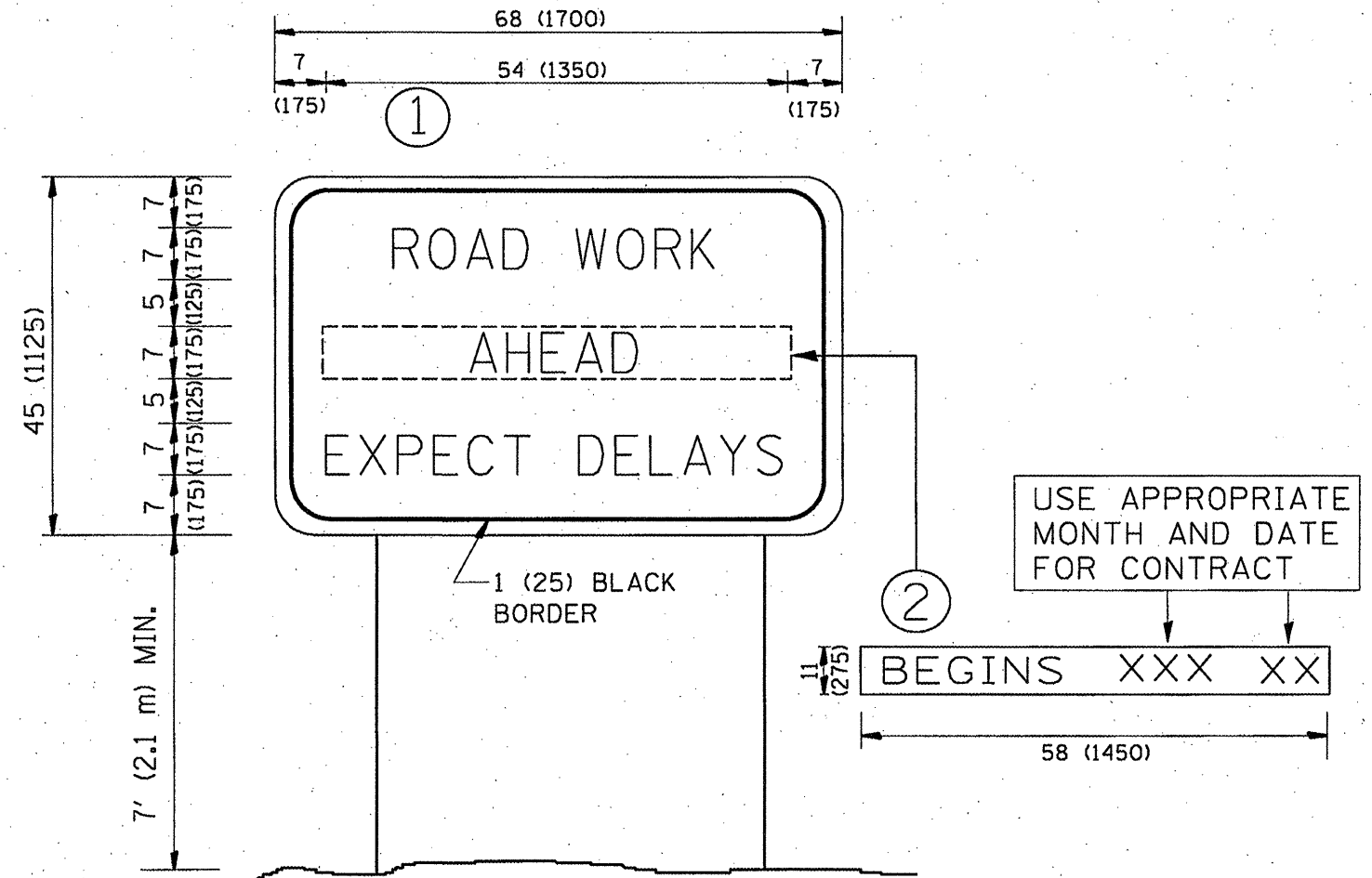
FILE NAME =	USER NAME = nathanba	DESIGNED -	REVISED -	<b>STATE OF ILLINOIS DEPARTMENT OF TRANSPORTATION</b>	STRUCTURE PLAN LOCATION 2: SN 099-0101 CASS ST BRIDGE	F.A. RTE.	SECTION	COUNTY	TOTAL SHEETS	SHEET NO.
c:\pwwork\pwwork\metherba\218642\0161818-sht-plan.dgn	DRAWN -	REVISED -	VAR			2010-063-1	WILL	10	6	
PLOT SCALE = 1/8" = 1'-0"	CHECKED -	REVISED -	CONTRACT NO. 60L44							
PLOT DATE = 8/10/2010	DATE -	REVISED -	FED. ROAD DIST. NO. 1 [ILLINOIS] FED. AID PROJECT							
						SCALE:	SHEET NO. OF SHEETS	STA.	TO STA.	











**NOTES:**

1. USE BLACK LETTERING ON ORANGE BACKGROUND.
2. ERECT SIGNS IN ADVANCE OF THE LOCATION FOR THE "ROAD CONSTRUCTION AHEAD" SIGN AT LOCATIONS AS DIRECTED BY THE ENGINEER.
3. ERECT SIGN ① WITH INSTALLED PANEL ② ONE WEEK PRIOR TO THE START OF CONSTRUCTION.
4. REMOVE PANEL ② SOON AFTER THE START OF CONSTRUCTION.
5. SEE SPECIAL PROVISION FOR "TEMPORARY INFORMATION SIGNING" FOR ADDITIONAL INFORMATION.
6. ONE SIGN ASSEMBLY EQUALS 25.70 SQ. FT. (2.3 SQ. M.)
7. SHALL BE PAID FOR AS TEMPORARY INFORMATION SIGNING.

ALL DIMENSIONS ARE IN INCHES (MILLIMETERS) UNLESS OTHERWISE SHOWN.

FILE NAME =	USER NAME = nothanbc	DESIGNED -	REVISED - R. MIRS 09-15-97
ct:\pw_work\pwidot\nethanbc\d0218642\016	018-ah-plot.dgn	DRAWN -	REVISED - R. MIRS 12-11-97
	PLOT SCALE = 1/8" = 1' IN.	CHECKED -	REVISED - T. RAMMACHER 02-02-99
	PLOT DATE = 11/4/2010	DATE -	REVISED - C. JUCIUS 01-31-07

STATE OF ILLINOIS  
DEPARTMENT OF TRANSPORTATION

ARTERIAL ROAD  
INFORMATION SIGN

SCALE: NONE SHEET NO. 1 OF 1 SHEETS STA. TO STA.

F.A. RTE.	SECTION	COUNTY	TOTAL SHEETS	SHEET NO.
VAR	2010-063-1	WILL	10	10
TC-22 CONTRACT NO. 60L44				
FED. ROAD DIST. NO. 1 ILLINOIS FED. AID PROJECT				