

F.A.I. RTE.	SECTION	COUNTY	TOTAL SHEETS	SHEET NO.
90/94	2010-075-1	COOK	33	1
FED ROAD DIST No. 1	ILLINOIS	CONTRACT No.	60L61	

STATE OF ILLINOIS
DEPARTMENT OF TRANSPORTATION
DIVISION OF HIGHWAYS

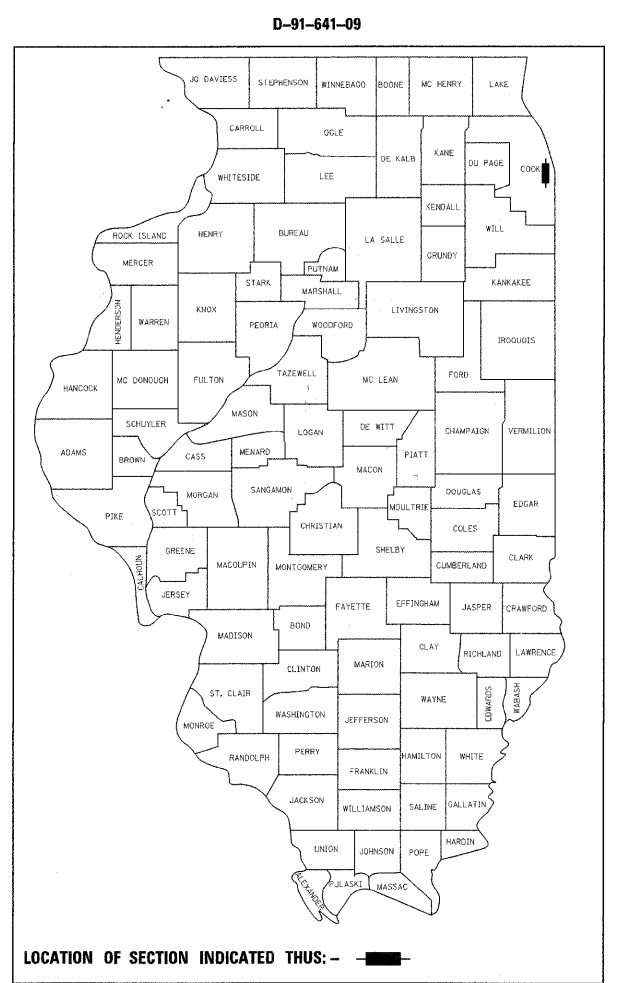
PROPOSED
HIGHWAY PLANS

FAI 90 /94 DAN RYAN PUMP STATION #26 (I-94)
ROOSEVELT ROAD AT UNION ROAD

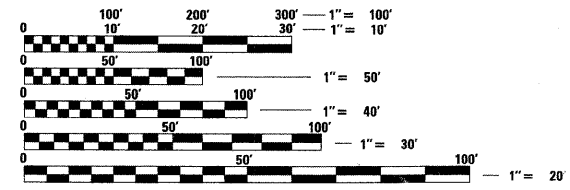
RETAINING WALL AND TRUCK PARKING AREA

SECTION 2010-075-1
PROJECT NO. -- --
COOK COUNTY
C-91-754-10

FOR INDEX OF SHEETS, SEE SHEET NO. 2



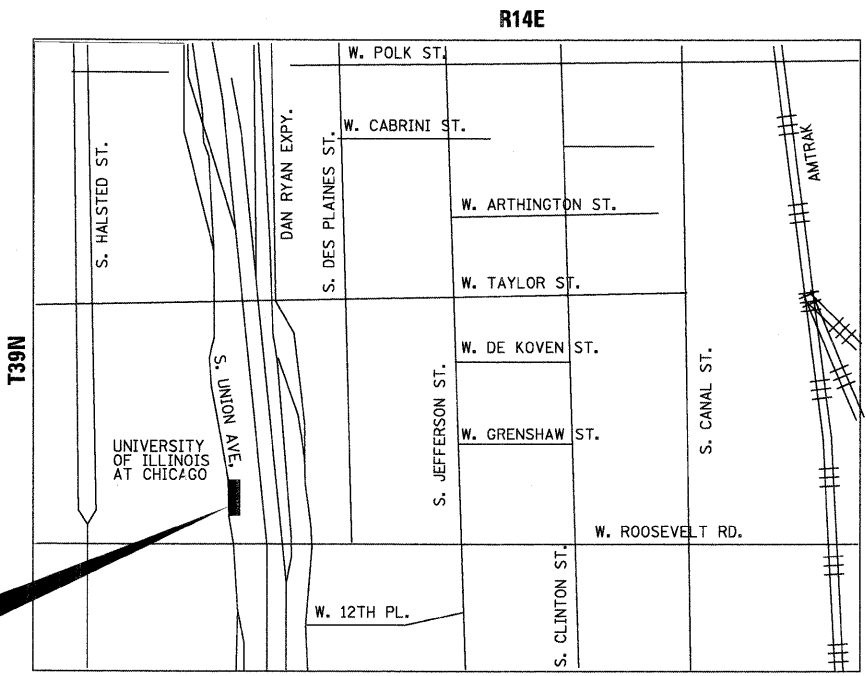
PROJECT IS LOCATED IN THE CITY OF CHICAGO



FULL SIZE PLANS HAVE BEEN PREPARED USING STANDARD ENGINEERING SCALES. REDUCED SIZED PLANS WILL NOT CONFORM TO STANDARD SCALES. IN MAKING MEASUREMENTS ON REDUCED PLANS, THE ABOVE SCALES MAY BE USED.

J.U.L.I.E.
 JOINT UTILITY LOCATION INFORMATION FOR EXCAVATION
 1-800-892-0123 OR 811

PROJECT LOCATION
 DAN RYAN PUMP STATION #26



NOT TO SCALE
 LOCATION MAP



STATE OF ILLINOIS
 DEPARTMENT OF TRANSPORTATION
 DIVISION OF HIGHWAYS

SUBMITTED NOVEMBER 1, 2010
Diana M. O'Keefe
 DEPUTY DIRECTOR OF HIGHWAYS, REGION ENGINEER

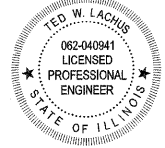
December 10 2010
Scott E. Stitt, P.E.
 ACTING ENGINEER OF DESIGN AND ENVIRONMENT

December 10 2010
Christine M. Reed
 DIRECTOR OF HIGHWAYS, CHIEF ENGINEER

PRINTED BY THE AUTHORITY
OF THE STATE OF ILLINOIS

PROJECT MANAGER RAJENDRA SHAH (847) 705-4555
PROJECT ENGINEER MICHELLE AQUINO (847) 705-4606
CONTRACT NO. 60L61

Primera
 100 S. WACKER DRIVE SUITE 700 CHICAGO IL 60606.
 P:312-606-0910 F:312-606-0415



Ted W. Lachus
 TED W. LACHUS, P.E.
 EXPIRES 11-30-2011
 10-29-2010
 DATE