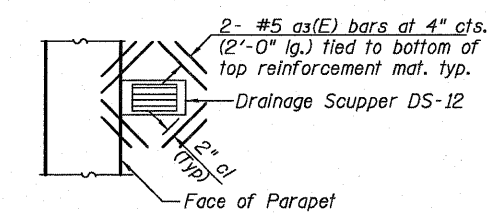


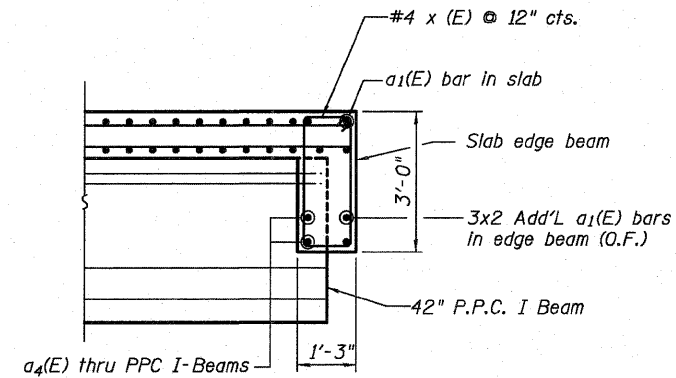
PARTIAL PLAN AT OPENING

Field cut $a_1(E)$, $a_2(E)$, $b(E)$ and $b_{13}(E)$ at opening. Provide additional $a_1(E)$ and $a_2(E)$ at both sides of opening for compensation. Field adjust bar location to avoid PVC sleeve.

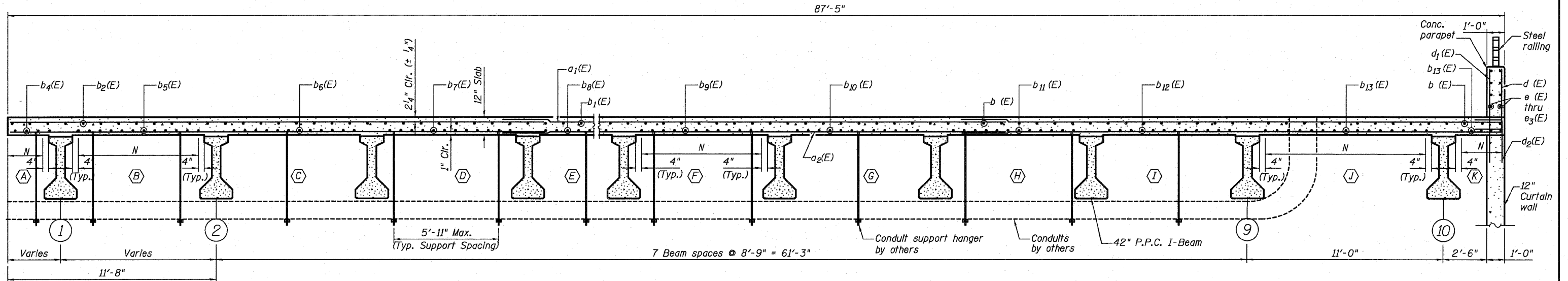
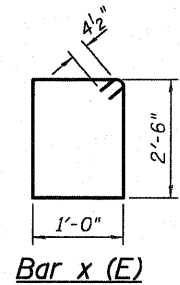


PARTIAL PLAN AT SCUPPER

Order $b_1(E)$, $b_2(E)$ thru $b_{12}(E)$ bars in full size. Cut bars in field to fit deck shape



SECTION B-B

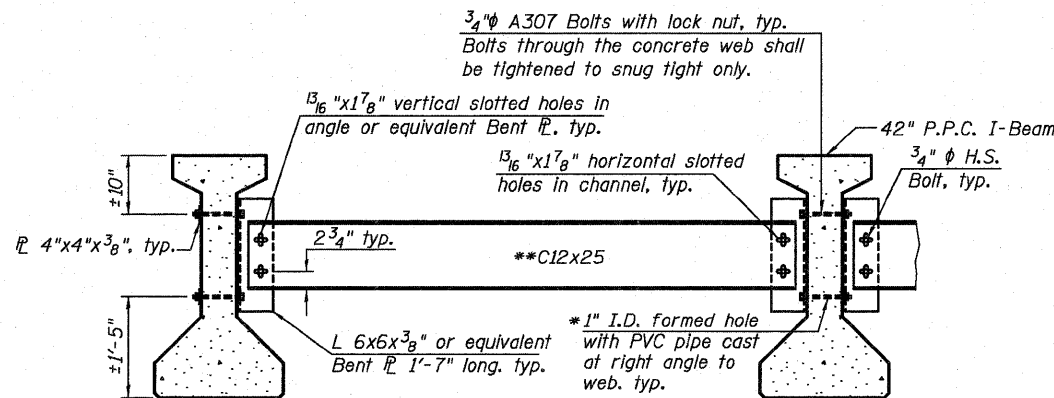


SECTION A-A

BAY	N
A	5- #6 $b_4(E)$ @ 8" cts. -Fan, (Bott.)
B	13- #6 $b_5(E)$ @ 8" cts. -Fan, (Bott.)
C	12- #6 $b_6(E)$ @ 7 3/8" cts. (Bott.)
D	12- #6 $b_7(E)$ @ 7 3/8" cts. (Bott.)
E	12- #6 $b_8(E)$ @ 7 3/8" cts. (Bott.)
F	12- #6 $b_9(E)$ @ 7 3/8" cts. (Bott.)
G	12- #6 $b_{10}(E)$ @ 7 3/8" cts. (Bott.)
H	12- #6 $b_{11}(E)$ @ 7 3/8" cts. (Bott.)
I	12- #6 $b_{12}(E)$ @ 7 3/8" cts. (Bott.)
J	15x2- #6 $b_{13}(E)$ @ 7 3/4" cts. (Bott.)
K	5x2- #6 $b_{13}(E)$ @ 7" cts. (Bott.)

BRACING DETAIL NOTES:

All material for bracing shall be hot dip galvanized according to AASHTO M111 unless otherwise noted. Two hardened washers are required for each set of oversized holes. All holes shall be 1/16 inch unless otherwise noted. 5/16 inch x 3 inch x 3 inch plate washers are required over all slotted holes. All bolts shall be galvanized according to AASHTO M232. Bracing shall be installed as beams are erected and tightened as soon as possible during erection. Permanent bracing shall not be paid for separately, but shall be included in the cost of Furnishing and Erecting Precast Prestressed Concrete I-Beams.



PERMANENT BRACING DETAIL

* Fabricator shall locate to miss strands within permissible tolerances.

** Alternate C12x30 channels are permitted to facilitate material acquisition

Note:
See Sheet SB of S19 for the permanent bracing location between P.P.C. I-Beams.

DESIGNED	JW
CHECKED	YMM
DRAWN	JLS & PS
CHECKED	TPG & JXH

Primera
100 S. WACKER DRIVE, SUITE 700, CHICAGO, IL 60605 . P.312-686-8800 F.312-686-9415

**SUPERSTRUCTURE SECTION AND DETAILS
STRUCTURE NUMBER 016-1308**

SHEET NO. S6	F.A.I. RTE.	SECTION	COUNTY	TOTAL SHEETS	SHEET NO.
90/94		2010-075-I	COOK	33	15
S19 SHEETS					CONTRACT NO. 60L61
	DATE: 12-03-10		ILLINOIS	FED. AID PROJECT	