

**EAST PIER
BILL OF MATERIAL**

Bar No.	Size	Length	Shape
h(E)	18 #5	31'-8"	—
h ₁ (E)	46 #5	10'-6"	—
h ₂ (E)	18 #5	14'-0"	—
h ₃ (E)	24 #5	3'-0"	—
h ₆ (E)	18 #5	17'-6"	—
p(E)	6 #7	33'-0"	—
p ₁ (E)	12 #7	35'-8"	└
p ₂ (E)	18 #9	35'-4"	—
s(E)	137 #4	12'-4"	□
s ₁ (E)	6 #4	6'-7"	□
sp(E)	6 #5	26'-0"	≡
sp ₁ (E)	6 #5	28'-0"	≡
u(E)	10 #5	9'-2"	┘
v(E)	192 #8	31'-6"	—
v ₁ (E)	96 #8	14'-0"	—
v ₂ (E)	122 #5	7'-8"	—
v ₃ (E)	4 #5	5'-0"	—
v ₇ (E)	148 #5	5'-4"	└
Concrete Structures	Cu. Yd.	69.1	
Reinforcement Bars, Epoxy Coated	Pound	28,360	
Bar Splicers	Each	180	
Drilled Shaft in Soil	Cu. Yd.	88.0	

* Length is height of spiral

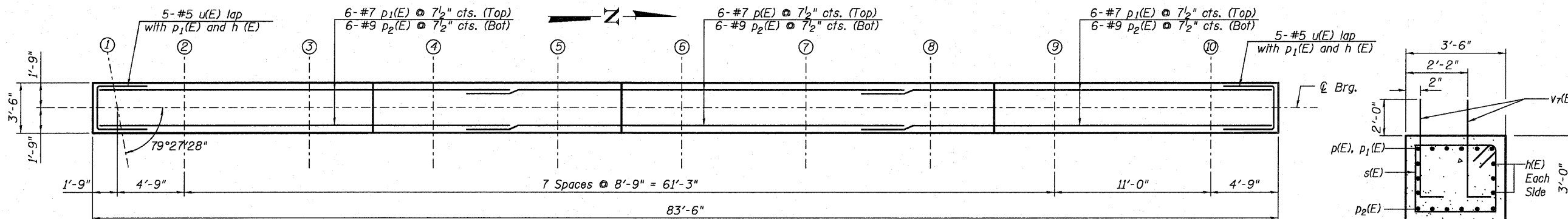
NOTES:

See Diaphragm elevations on Sheet S8 of S19 for location and spacing of v₇(E).

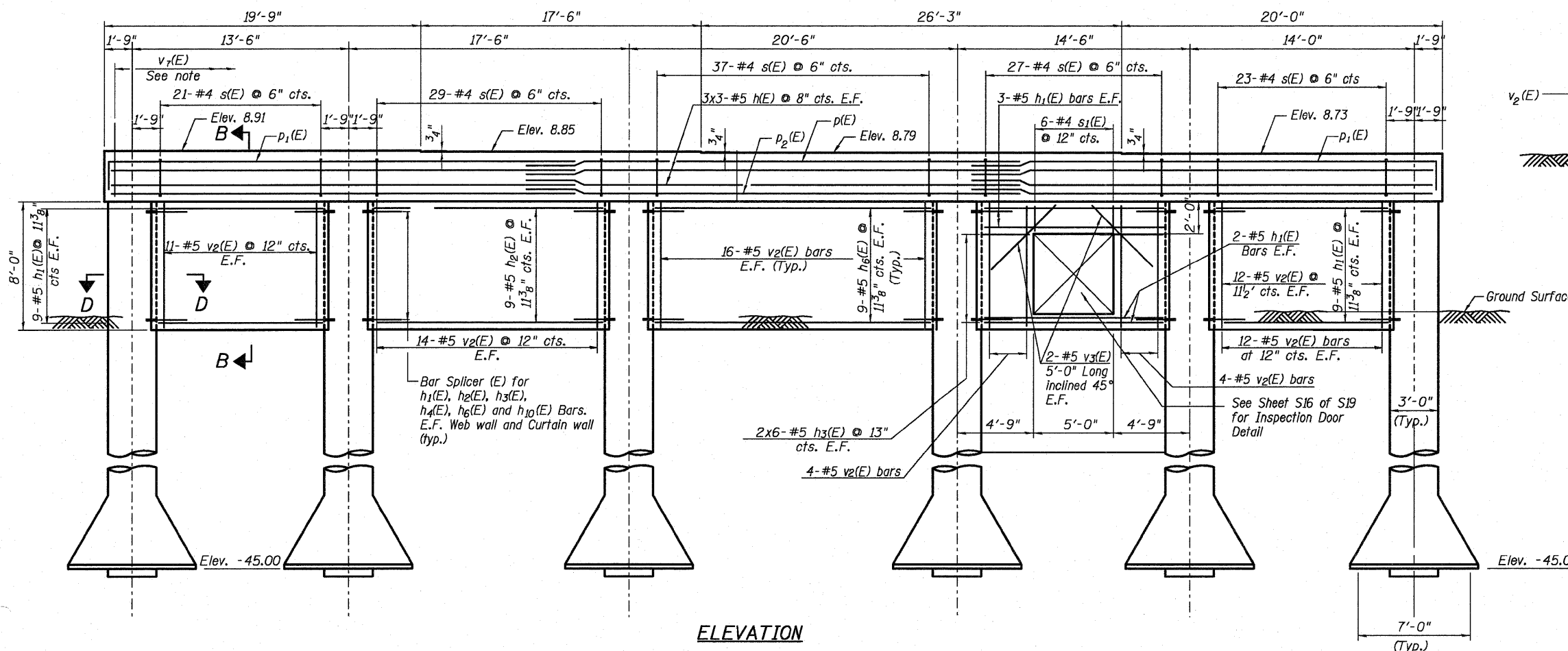
See Sheet S11 for Drilled Shaft reinforcement details.

See Sheet S12 for Bars v₇(E), p₁(E), u(E) and s(E) details.

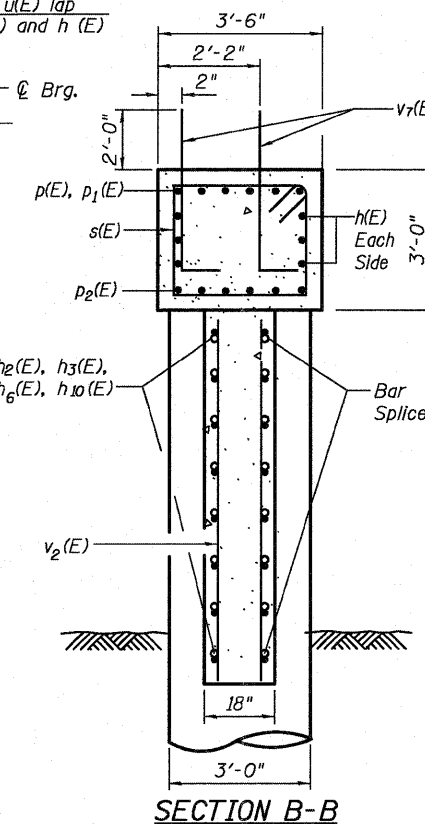
See Sheet S14 for additional Bar Splicers in Drilled Shafts for Curtain Walls.



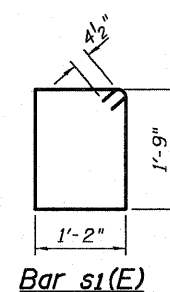
TOP PLAN



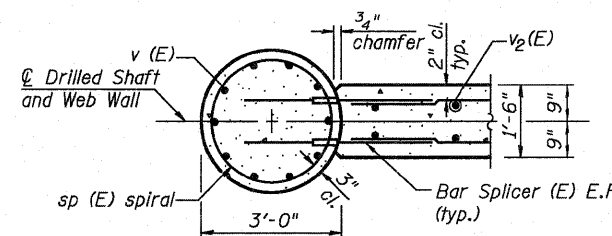
ELEVATION



SECTION B-B



Bar s₁(E)



SECTION D-D

MIN. BAR LAP

- #5 = 3'-3"
- #6 = 3'-10"
- #7 = 5'-2"
- #8 = 6'-9"

DESIGNED	JW
CHECKED	YMM
DRAWN	JLS & PS
CHECKED	TPG & JXH



**EAST PIER DETAILS
STRUCTURE NUMBER 016-1308**

SHEET NO. S13	F.A.I. RTE.	SECTION	COUNTY	TOTAL SHEETS	SHEET NO.
	90/94	2010-075-I	COOK	33	22
S19 SHEETS	CONTRACT NO. 60L61				
DATE: 12-03-10		ILLINOIS FED. AID PROJECT			