

STATE OF ILLINOIS
DEPARTMENT OF TRANSPORTATION
DIVISION OF HIGHWAYS

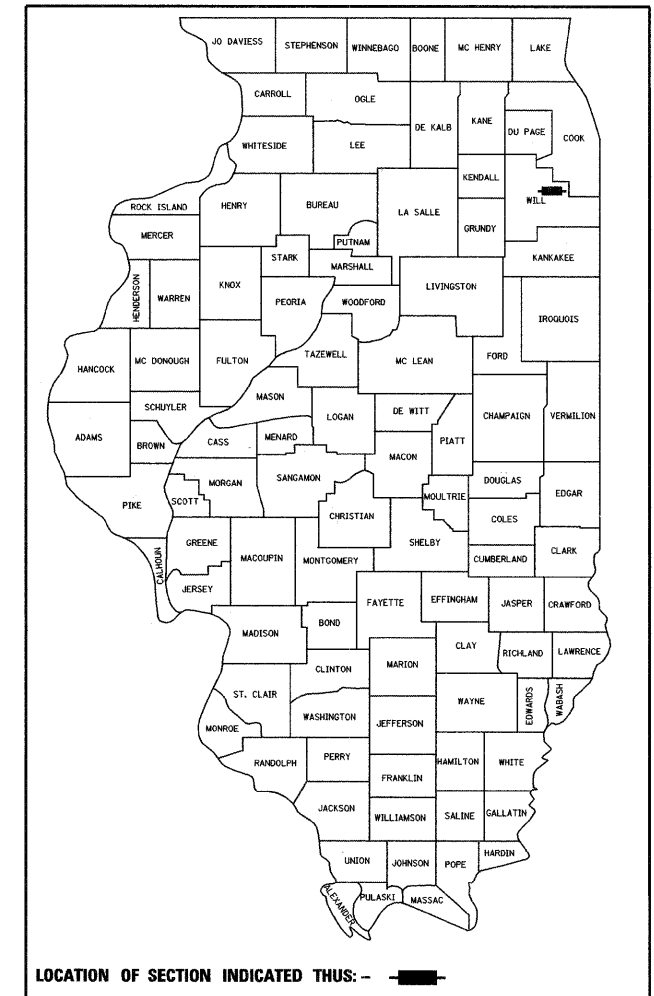
**PROPOSED
HIGHWAY PLANS**

F.A.I. ROUTE 80 (INTERSTATE 80)
SECTION 99(5&5-1) Y-1
PROJECT: ACIM-080-4(190)142
NORFOLK SOUTHERN RAILROAD TO U.S. ROUTE 45
ADDITIONAL LANES, SIGNING & SURVEILLANCE
WILL COUNTY
C-91-141-11

F.A.I. RTE.	SECTION	COUNTY	TOTAL SHEETS	SHEET NO.
80	99(5&5-1) Y-1	WILL	309*	1

ILLINOIS CONTRACT NO. 60M59
*309+1=310
*310+21=331

D-91-046-10



LOCATION OF SECTION INDICATED THIS: - [shaded rectangle]

FOR INDEX OF SHEETS, SEE SHEET NO. 2

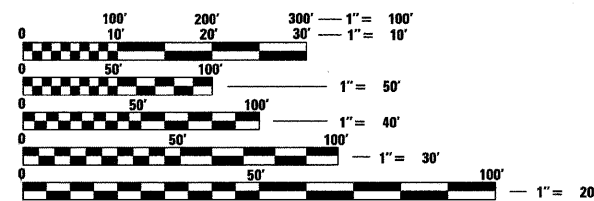
TRAFFIC DATA

ADT (2008):
I-355 TO US ROUTE 45 = 80,500

ADT (2030):
I-355 TO US ROUTE 45 = 125,000

POSTED SPEED = 65 mph

PROJECT LOCATED IN THE VILLAGES
OF MOKENA & ORLAND PARK



FULL SIZE PLANS HAVE BEEN PREPARED USING STANDARD ENGINEERING SCALES. REDUCED SIZED PLANS WILL NOT CONFORM TO STANDARD SCALES. IN MAKING MEASUREMENTS ON REDUCED PLANS, THE ABOVE SCALES MAY BE USED.

J.U.L.I.E.
JOINT UTILITY LOCATION INFORMATION FOR EXCAVATION
1-800-892-0123
OR 811

PROJECT ENGINEER: SUNG BYUN
PROJECT MANAGER: KIM HARVEY

CONTRACT NO. 60M59

STEPHEN N. SUG
062-044117
LICENSED PROFESSIONAL ENGINEER
STATE OF ILLINOIS
DATE: 10/20/2010
SEAL EXPIRES: 11/30/2011

SALVATORE C. DI BERNARDO
081-005930
LICENSED STRUCTURAL ENGINEER
STATE OF ILLINOIS
DATE: 10/20/2010
SEAL EXPIRES: 11/30/2012

FRED M. LYNCH
062-056704
LICENSED PROFESSIONAL ENGINEER
STATE OF ILLINOIS
DATE: 10/20/2010
SEAL EXPIRES: 11/30/2011
SHEETS: 113 - 137



LOCATION MAP
NOT TO SCALE

GROSS LENGTH = 23,950 FT. = 4.54 MILE
NET LENGTH = 23,950 FT. = 4.54 MILE



S.N. 099-2002
I-80 OVER MARLEY CREEK

I-80
STA. 882 + 50
PROJECT BEGINS

I-80
STA. 1122 + 00
PROJECT ENDS

S.N. 099-0192
WOLF ROAD OVER I-80

S.N. 099-0198
MAPLE AVENUE OVER I-80

S.N. 099-0070 (EB)
S.N. 099-0071 (WB)
I-80 OVER NS RAILROAD
STRUCTURE WIDENING
I-80 & STA. 898 + 75.42
STRUCTURE LENGTH = 211'-4"

Ciorba Group, Inc.

DESIGN FIRM
REGISTRATION NUMBER

184-001016

CONSULTING ENGINEERS
SUITE 402, 5507 NORTH CUMBERLAND AVE
CHICAGO, ILLINOIS 60656 ☎ (773) 775-4009

Ciorba Group, Inc.
CONSULTING ENGINEERS
5507 North Cumberland Avenue, Suite 402 Chicago, Illinois 60656
Tel. 773.775.4009 Fax 773.775.4014 Email chicago@ciorba.com

PRINTED BY THE AUTHORITY
OF THE STATE OF ILLINOIS

Rev. 1-4-2011

CONSULTANT PROJECT MANAGER - KIM HARVEY, (847) 705-4055, DISTRICT 1