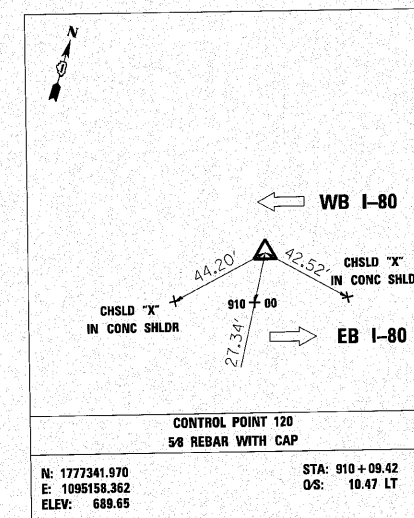
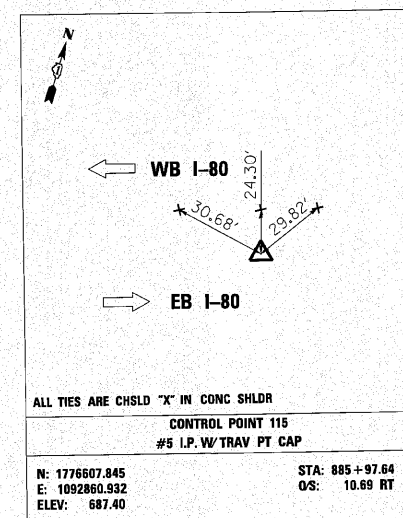
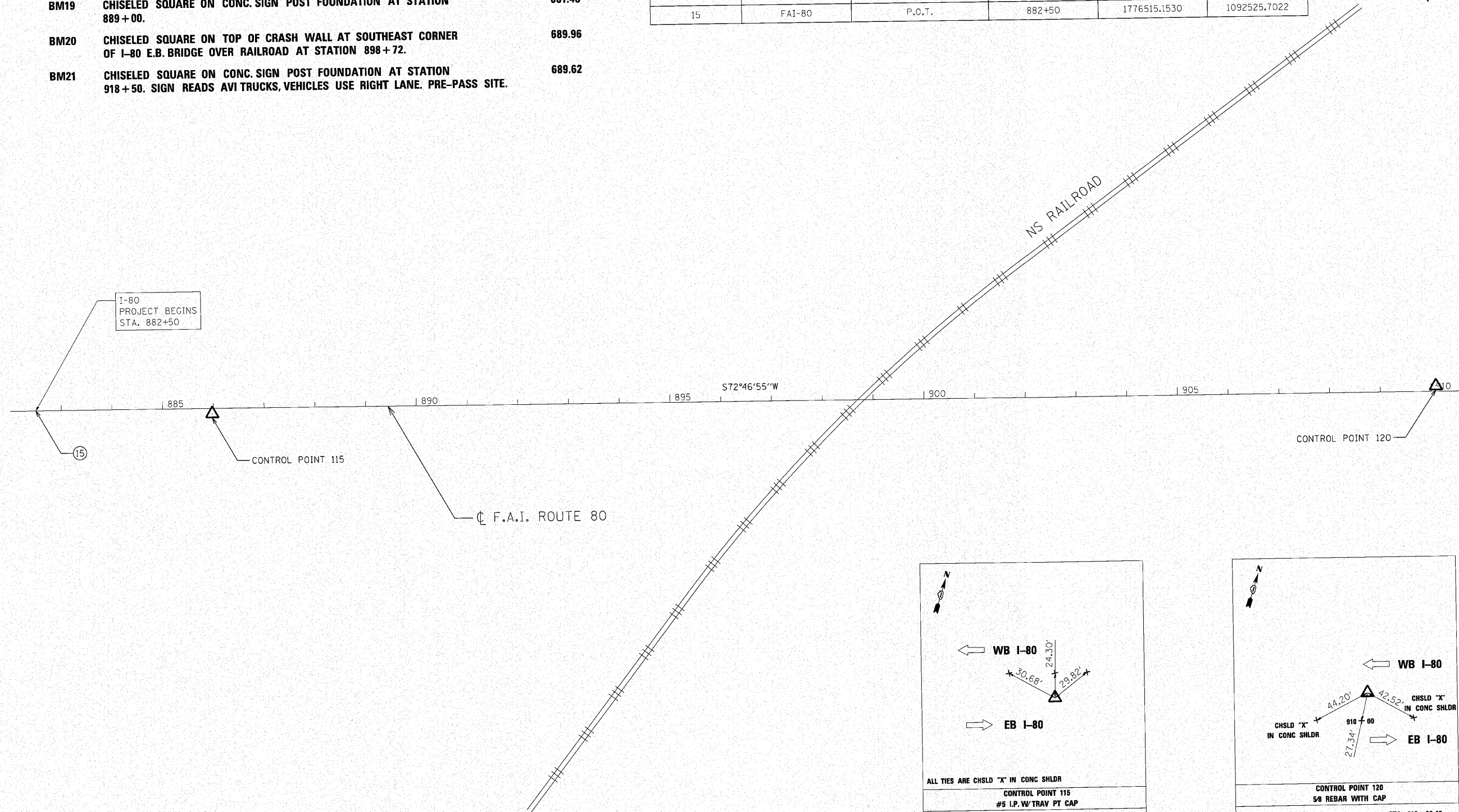


BM#	DESCRIPTION	ELEVATION
BM19	CHISELED SQUARE ON CONC. SIGN POST FOUNDATION AT STATION 889+00.	681.43
BM20	CHISELED SQUARE ON TOP OF CRASH WALL AT SOUTHEAST CORNER OF I-80 E.B. BRIDGE OVER RAILROAD AT STATION 898+72.	689.96
BM21	CHISELED SQUARE ON CONC. SIGN POST FOUNDATION AT STATION 918+50. SIGN READS AVI TRUCKS, VEHICLES USE RIGHT LANE. PRE-PASS SITE.	689.62

PROJECT COORDINATES					
NUMBER	LOCATION	DESCRIPTION	STATION	NORTHING	EASTING
15	FAI-80	P.O.T.	882+50	1776515.1530	1092525.7022



MATCHLINE STA. 912+00
SEE SHEET 29



ENGINEERING CONSULTANT	USER NAME = jk.jellman	DESIGNED - CRC	REVISED -
		DRAWN - JMK	REVISED -
	PLOT SCALE = 1/8" = 100.0000' / IN.	CHECKED - MRJ	REVISED -
	PLOT DATE = 10/28/2010	DATE - 10/21/2010	REVISED -

STATE OF ILLINOIS
DEPARTMENT OF TRANSPORTATION

F.A.I. 80 FROM NS RAILROAD TO US 45
ALIGNMENTS, TIES, AND BENCHMARKS

SCALE: SHEET NO. OF SHEETS STA. TO STA.

F.A.I. RTE.	SECTION	COUNTY	TOTAL SHEETS	SHEET NO.
80	99(5&5-1) Y-1	WILL	309	28
ILLINOIS FED. AID PROJECT			CONTRACT NO. 60M59	