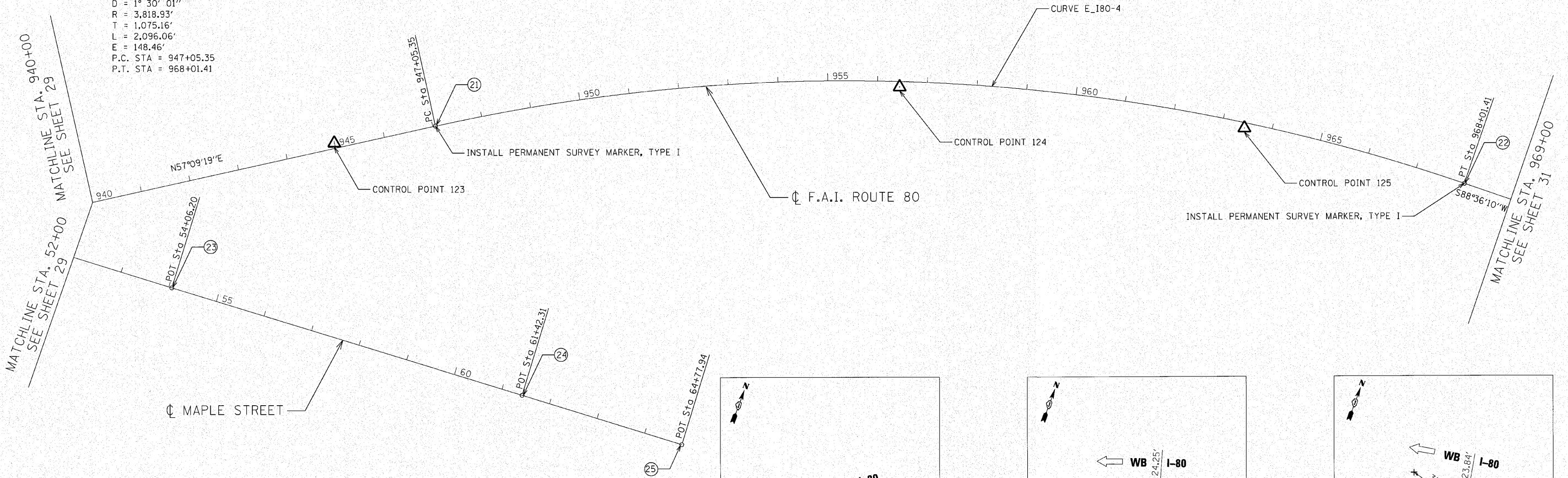


PROJECT COORDINATES

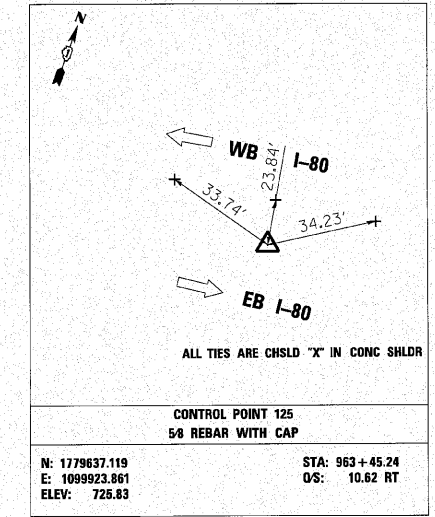
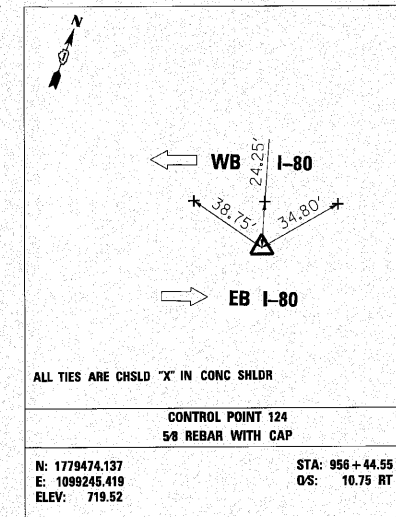
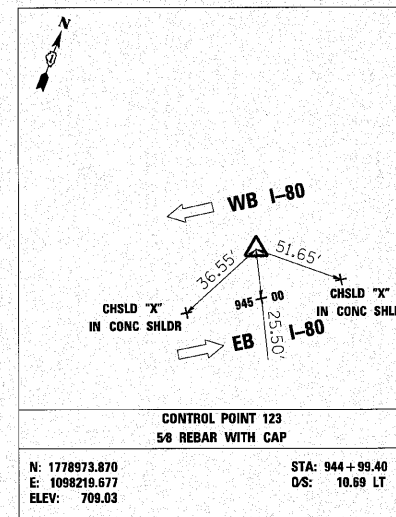
NUMBER	LOCATION	DESCRIPTION	STATION	NORTHING	EASTING
21	FAI - 80	P.C. STATION	947+05.35	1779076.592	1098398.500
22	FAI - 80	P.T. STATION	968+01.41	1779685.933	1100376.629
23	E. MAPLE	P.O.T. STATION	54+06.20	1778588.519	1098014.163
24	E. MAPLE	P.O.T. STATION	61+42.31	1778631.576	1098749.013
25	E. MAPLE	P.O.T. STATION	64+77.94	1778650.195	1099084.127

CURVE DATA F.A.I. ROUTE 80

CURVE E_180-4
 PI STA. = 957+80.50
 $\Delta = 31^\circ 26' 51''$ (RT)
 $D = 1^\circ 30' 01''$
 $R = 3,818.93'$
 $T = 1,075.16'$
 $L = 2,096.06'$
 $E = 148.46'$
 P.C. STA = 947+05.35
 P.T. STA = 968+01.41



BM#	DESCRIPTION	ELEVATION
BM24	CHISELED SQUARE IN SOUTH EDGE OF CONC. SHOULDER AT STAMPED STATION 952 + 50.	714.33
BM25	CHISELED SQUARE ON CONC. LIGHT POLE FOUNDATION AT STAMPED STATION 962 + 50.	721.53



C:\p\c\1338A\3_cest\design\m\scshpsta_338E.dwg:1:leg00.dgn

ENGINEERING CONSULTANT
Clorba Group, Inc.
 CONSULTING ENGINEERS
 5507 North Cumberland Avenue, Suite 402
 Chicago, Illinois 60630
 Tel: 773.775.4000 Fax: 773.775.4014
 Email: cgroup@clorba.com

USER NAME = jkellman	DESIGNED - CRC	REVISED -
PLOT SCALE = 1/80.0000" / IN.	DRAWN - JMK	REVISED -
PLOT DATE = 10/28/2010	CHECKED - MRJ	REVISED -
	DATE - 10/27/2010	REVISED -

STATE OF ILLINOIS
 DEPARTMENT OF TRANSPORTATION

F.A.I. 80 FROM NS RAILROAD TO US 45
 ALIGNMENTS, TIES, AND BENCHMARKS

SCALE: SHEET NO. OF SHEETS STA. TO STA.

F.A.I. RTE.	SECTION	COUNTY	TOTAL SHEETS	SHEET NO.
80	99(5&5-1) Y-1	WILL	309	30
				CONTRACT NO. 60M59
ILLINOIS FED. AID PROJECT				