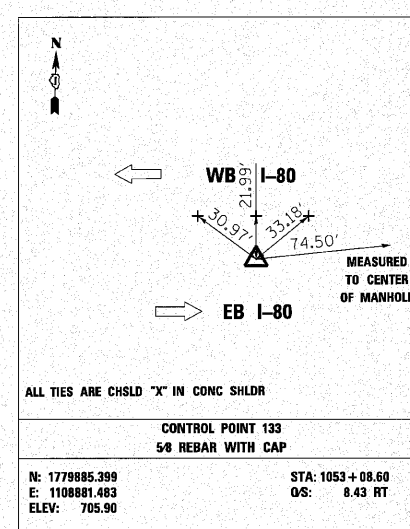
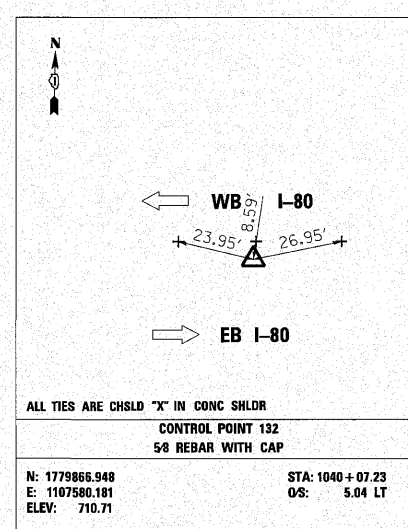
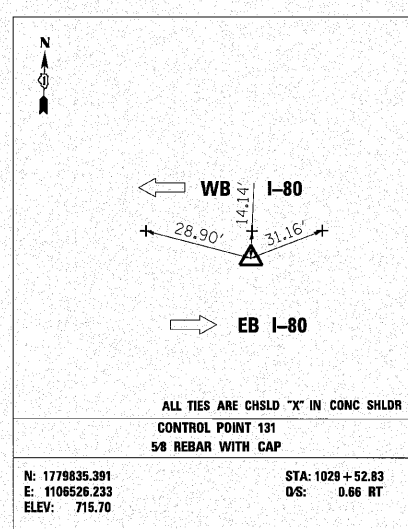


MATCHLINE STA. 1029+00  
SEE SHEET 32

MATCHLINE STA. 1059+00  
SEE SHEET 34



BM#	DESCRIPTION	ELEVATION
BM31	CHISELED SQUARE SOUTH EDGE OF CONC. SHOULDER AT STAMPED STATION 1030+00.	716.71
BM32	CHISELED SQUARE IN CONC. SIGN FOUNDATION AT STATION 1042+00 SIGN READS GAS-EXIT 45.	707.46
BM33	CHISELED SQUARE IN CONC. SIGN FOUNDATION AT STATION 1057+60. SIGN READS MOKENA, FRANKFORT, ORLAND PARK EXIT 145.	700.88

	ENGINEERING CONSULTANT	DESIGNED - CRC	REVISED -
	USER NAME = jk.jelliman	DRAWN - JMK	REVISED -
	PLOT SCALE = 100.0000' / IN.	CHECKED - MRJ	REVISED -
	PLOT DATE = 10/28/2010	DATE - 10/27/2010	REVISED -

**STATE OF ILLINOIS  
DEPARTMENT OF TRANSPORTATION**

F.A.I. 80 FROM NS RAILROAD TO US 45 ALIGNMENTS, TIES, AND BENCHMARKS		F.A.I. RTE: 80	SECTION: 99(5&S-1) Y-1	COUNTY: WILL	TOTAL SHEETS: 309	SHEET NO.: 33
SCALE:	SHEET NO. OF SHEETS	STA. TO STA.	ILLINOIS FED. AID PROJECT			

c:\p\c01\338A\3\_eras\design\manholes\338E-Align\Ties12.dgn