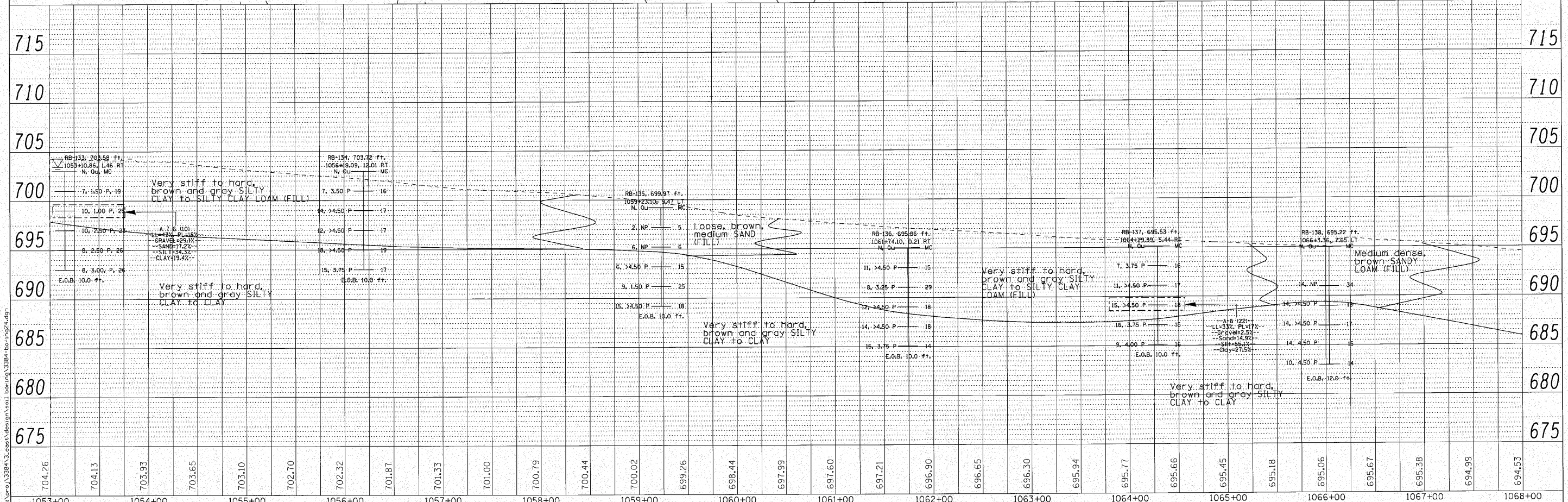
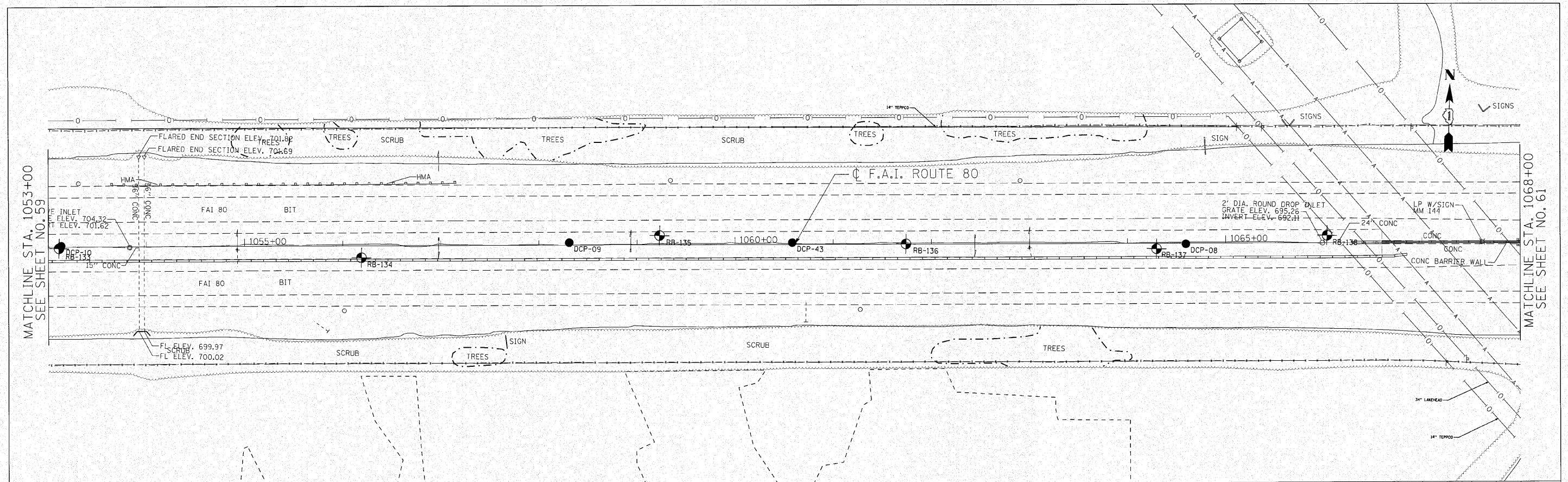


DATE	
BY	
REVIEWED	
PLANNED	
NOTED	
NO.	
NO.	
NO.	
NO.	
NO.	
NO.	

DATE	
BY	
REVIEWED	
PLANNED	
NOTED	
NO.	
NO.	
NO.	
NO.	
NO.	
NO.	



704.26	704.13	703.93	703.65	703.10	702.70	702.32	701.87	701.33	701.00	700.79	700.44	700.02	699.26	698.44	697.99	697.60	697.21	696.90	696.65	696.30	695.94	695.77	695.66	695.45	695.18	695.06	695.67	695.38	694.99	694.53
1053+00		1054+00		1055+00		1056+00		1057+00		1058+00		1059+00		1060+00		1061+00		1062+00		1063+00		1064+00		1065+00		1066+00		1067+00		1068+00

ENGINEERING CONSULTANT

USER NAME	= mthomas
DESIGNED	- CRC
DRAWN	- JMK
CHECKED	- MRJ
DATE	- 10/27/2010
REVISED	-
REVISED	-
REVISED	-
REVISED	-

STATE OF ILLINOIS
DEPARTMENT OF TRANSPORTATION

F.A.I. 80 FROM US 30 TO US 45
SOIL BORING LOCATION PLANS AND SOIL PROFILES
SCALE: 1" = 50' SHEET NO. OF SHEETS STA. 1053+00 TO STA. 1068+00

F.A.I. RTE.	SECTION	COUNTY	TOTAL SHEETS	SHEET NO.
80	9915&5-1) Y-1	WILL	309	60
CONTRACT NO. 60M59			ILLINOIS FED. AID PROJECT	

