






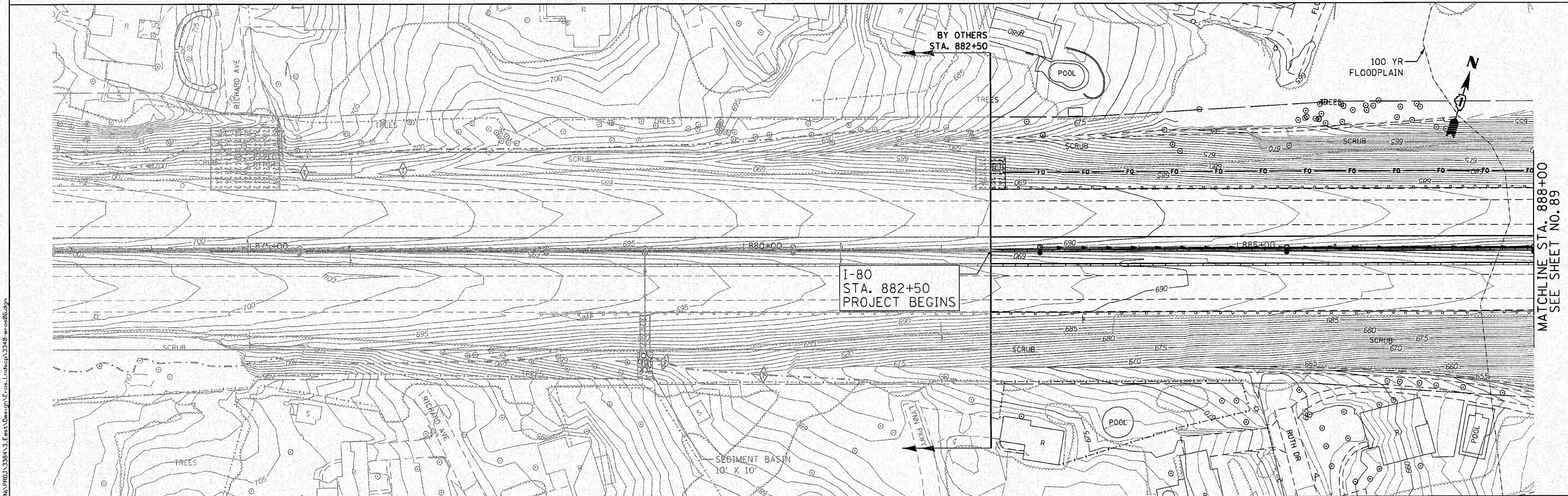


**LEGEND**

-  PERIMETER EROSION BARRIER
-  OUTLET FLOW
-  INLET PROTECTION
-  TEMPORARY DITCH CHECK
-  TEMPORARY EROSION CONTROL SEEDING
-  TEMPORARY MULCH
-  STONE RIP RAP WITH FILTER FABRIC

**NOTE:**

CONTRACTOR SHALL PROVIDE INLET PROTECTION TO ALL PROPOSED INLETS LOCATED WITHIN THE PROJECT LIMITS.



**ENGINEERING CONSULTANT**  
 **Clorba Group, Inc.**  
 CONSULTING ENGINEERS  
 5507 North Cumberland Avenue, Suite 402  
 Chicago, Illinois 60630  
 Tel. 773.775.4000 Fax 773.775.4014  
 Email: clorba@clorba.com

USER NAME = dmorris	DESIGNED - CRC	REVISED -
PLOT SCALE = 50,000' / IN.	DRAWN - JMK	REVISED -
PLOT DATE = 12/6/2010	CHECKED - MRJ	REVISED -
	DATE - 10/27/2010	REVISED -

**STATE OF ILLINOIS  
 DEPARTMENT OF TRANSPORTATION**

**F.A.I. 80 FROM NS RAILROAD TO US 45  
 EROSION AND SEDIMENT CONTROL PLAN**

SCALE: 1" = 50' SHEET NO. OF SHEETS STA. 882+50 TO STA. 888+00

F.A.I. RTE.	SECTION	COUNTY	TOTAL SHEETS	SHEET NO.
80	9915&5-1) Y-1	WILL	309	88
CONTRACT NO. 60M59			ILLINOIS FED. AID PROJECT	

M:\PROJ\328413\_Eros\Design\Final\Drawings\328413.dwg