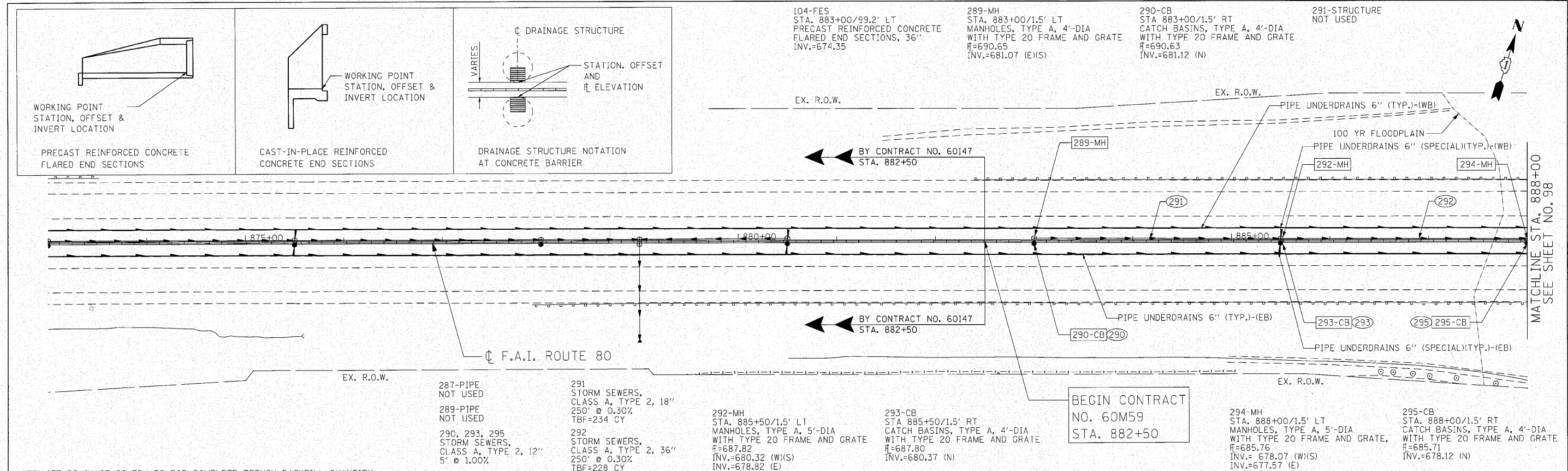
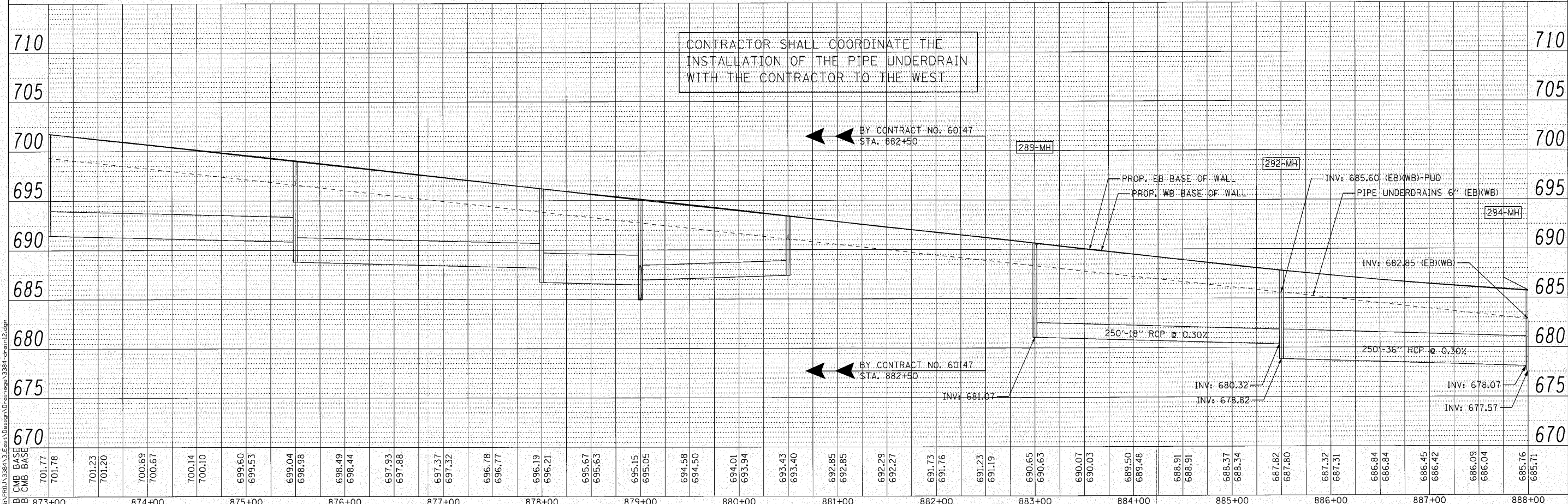


DATE	
BY	
REVISIONS	
NO.	
DATE	
BY	
REVISIONS	
NO.	
DATE	
BY	
REVISIONS	
NO.	

DATE	
BY	
REVISIONS	
NO.	
DATE	
BY	
REVISIONS	
NO.	
DATE	
BY	
REVISIONS	
NO.	



NOTE: SEE DRAINAGE SCHEDULES FOR COMPLETE TRENCH BACKFILL QUANTITY



ENGINEERING CONSULTANT CONSULTING ENGINEERS 5577 North Cumberland Avenue, Suite 402 Chicago, Illinois 60630 Tel: 773.775.4000 Fax: 773.775.4614 Email: ciorba@ciorba.com	USER NAME = k.jellman DESIGNED - CRC DRAWN - JMK CHECKED - MRJ DATE - 10/27/2010	REVISED - REVISED - REVISED - REVISED -	STATE OF ILLINOIS DEPARTMENT OF TRANSPORTATION	F.A.I. 80 FROM NS RAILROAD TO US 45 PROPOSED DRAINAGE PLAN AND PROFILE SCALE: 1" = 50' SHEET NO. 97 OF SHEETS STA. 882+50 TO STA. 888+00	SECTION 80 COUNTY WILL CONTRACT NO. 60M59 ILLINOIS FED. AID PROJECT	TOTAL SHEETS 309 SHEET NO. 97
--	--	--	---	--	--	----------------------------------