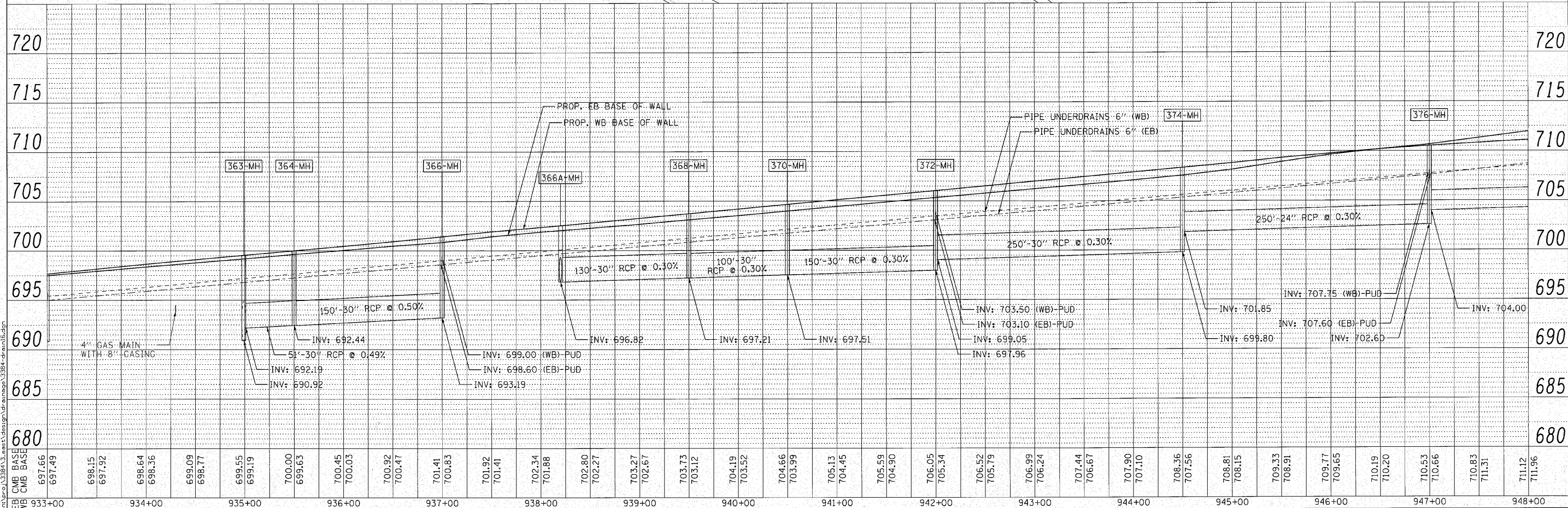
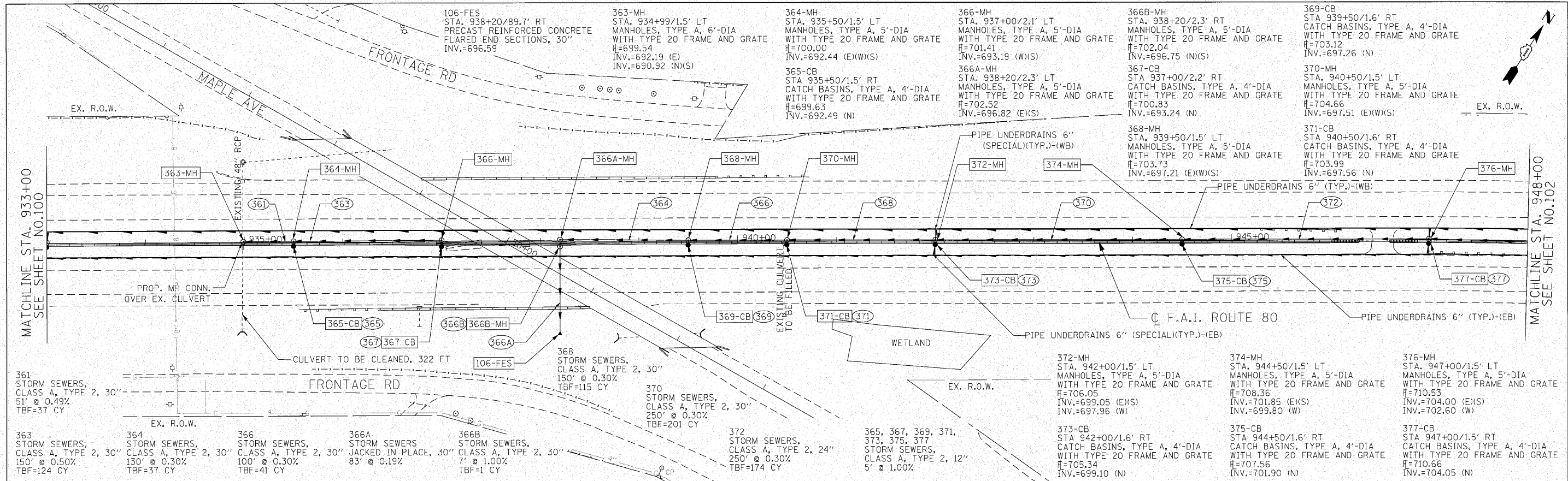


DATE	
BY	
REVISIONS	
NO.	
DATE	
BY	
REVISIONS	
NO.	
DATE	
BY	
REVISIONS	
NO.	

DATE	
BY	
REVISIONS	
NO.	
DATE	
BY	
REVISIONS	
NO.	
DATE	
BY	
REVISIONS	
NO.	



ENGINEERING CONSULTANT	USER NAME = jkjetlman	DESIGNED - CRC	REVISED -	<b>STATE OF ILLINOIS</b> <b>DEPARTMENT OF TRANSPORTATION</b> <b>F.A.I. 80 FROM NS RAILROAD TO US 45</b> <b>PROPOSED DRAINAGE PLAN AND PROFILE</b>	F.A.I. SECTION	COUNTY	TOTAL SHEETS	SHEET NO.	
CONSULTING ENGINEERS	PLOT SCALE = 50.0000' / IN.	DRAWN - JMK	REVISED -		80	9915&5-11) Y-1	WILL	309	101
5507 North Cumberland Avenue, Suite 402 Chicago, Illinois 60630 Tel: 773.775.4000 Fax: 773.775.4014 Email: Chicago@Ciorba.com	PLOT DATE = 10/28/2010	CHECKED - MRJ	REVISED -		CONTRACT NO. 60M59				
		DATE = 10/27/2010	REVISED -		ILLINOIS FED. AID PROJECT				



STATE OF ILLINOIS  
DEPARTMENT OF TRANSPORTATION

F.A.I. 80 FROM NS RAILROAD TO US 45  
PROPOSED DRAINAGE PLAN AND PROFILE

F.A.I. SECTION	COUNTY	TOTAL SHEETS	SHEET NO.
80	WILL	309	101
CONTRACT NO. 60M59			
ILLINOIS FED. AID PROJECT			

SCALE: 1" = 50' SHEET NO. 101 OF SHEETS STA. 933+00 TO STA. 948+00