

404-MH STA. 979+00/1.5' LT MANHOLES, TYPE A, 4'-DIA WITH TYPE 20 FRAME AND GRATE H=736.39 INV.=730.18 (W)(S)

405-CB STA. 979+00/1.5' RT CATCH BASINS, TYPE A, 4'-DIA WITH TYPE 20 FRAME AND GRATE H=736.35 INV.=730.23 (N)

406-MH STA. 979+47/1.5' LT MANHOLES, TYPE A, 5'-DIA WITH TYPE 20 FRAME AND GRATE H=736.56 INV.=730.48 (E)

407-MH STA. 980+70/1.5' LT MANHOLES, TYPE A, 4'-DIA WITH TYPE 20 FRAME AND GRATE H=737.03 INV.=730.85 (E)(W)(S)

408-CB STA. 980+70/1.5' RT CATCH BASINS, TYPE A, 4'-DIA WITH TYPE 20 FRAME AND GRATE H=736.99 INV.=730.90 (N)

409-MH STA. 982+00/1.5' LT MANHOLES, TYPE A, 4'-DIA WITH TYPE 20 FRAME AND GRATE H=736.77 INV.=731.24 (W)(S)

410-CB STA. 982+00/1.5' RT CATCH BASINS, TYPE A, 4'-DIA WITH TYPE 20 FRAME AND GRATE H=736.74 INV.=731.29 (N)

411-MH STA. 984+50/1.5' LT MANHOLES, TYPE A, 5'-DIA WITH TYPE 20 FRAME AND GRATE H=736.25 INV.=729.54 (E)(S)

412-CB STA. 984+50/1.5' RT CATCH BASINS, TYPE A, 4'-DIA WITH TYPE 20 FRAME AND GRATE H=736.35 INV.=729.59 (N)

413-MH STA. 986+60/1.5' LT MANHOLES, TYPE A, 5'-DIA WITH TYPE 20 FRAME AND GRATE H=735.49 INV.=727.41 (E)

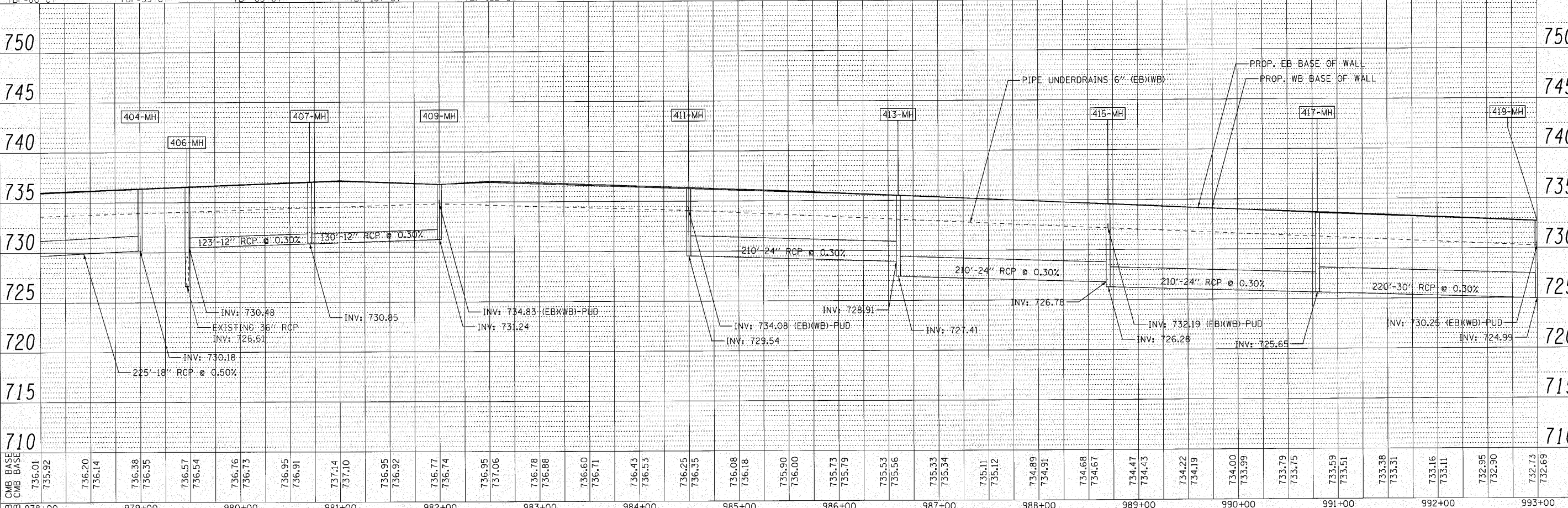
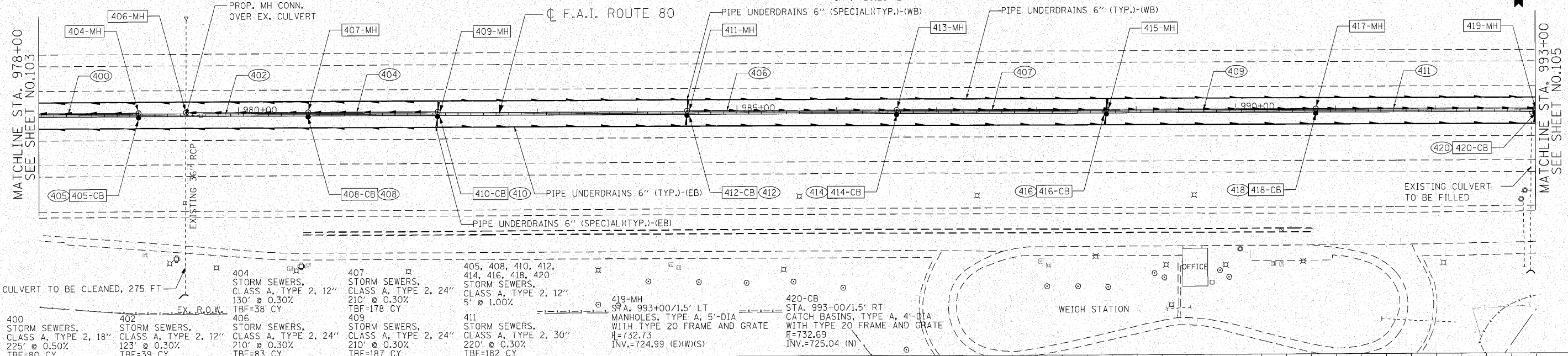
414-CB STA. 986+60/1.5' RT CATCH BASINS, TYPE A, 4'-DIA WITH TYPE 20 FRAME AND GRATE H=735.52 INV.=728.96 (N)

415-MH STA. 988+70/1.5' LT MANHOLES, TYPE A, 5'-DIA WITH TYPE 20 FRAME AND GRATE H=734.60 INV.=726.78 (W)(S)

416-CB STA. 988+70/1.5' RT CATCH BASINS, TYPE A, 4'-DIA WITH TYPE 20 FRAME AND GRATE H=734.57 INV.=726.83 (N)

417-MH STA. 990+80/1.5' LT MANHOLES, TYPE A, 5'-DIA WITH TYPE 20 FRAME AND GRATE H=733.67 INV.=725.65 (E)(W)(S)

418-CB STA. 990+80/1.5' RT CATCH BASINS, TYPE A, 4'-DIA WITH TYPE 20 FRAME AND GRATE H=733.61 INV.=725.70 (N)



ENGINEERING CONSULTANT	USER NAME = jkjelmani	DESIGNED - CRC	REVISED -
CONSULTING ENGINEERS		DRAWN - JMK	REVISED -
		CHECKED - MRJ	REVISED -
		DATE - 10/27/2010	REVISED -

**Corba Group, Inc.**  
CONSULTING ENGINEERS  
6567 North Cumberland Avenue, Suite 402  
Chicago, Illinois 60630  
Tel: 773.775.4009 Fax: 773.775.4014  
Email: corba@corba.com

STATE OF ILLINOIS  
DEPARTMENT OF TRANSPORTATION

F.A.I. 80 FROM NS RAILROAD TO US 45  
PROPOSED DRAINAGE PLAN AND PROFILE

F.A.I. RTE.	SECTION	COUNTY	TOTAL SHEETS	SHEET NO.
80	99(5&5-1) Y-1	WILL	309	104
CONTRACT NO. 60M59			ILLINOIS FED. AID PROJECT	

SCALE: 1" = 50' SHEET NO. 104 OF SHEETS STA. 978+00 TO STA. 993+00