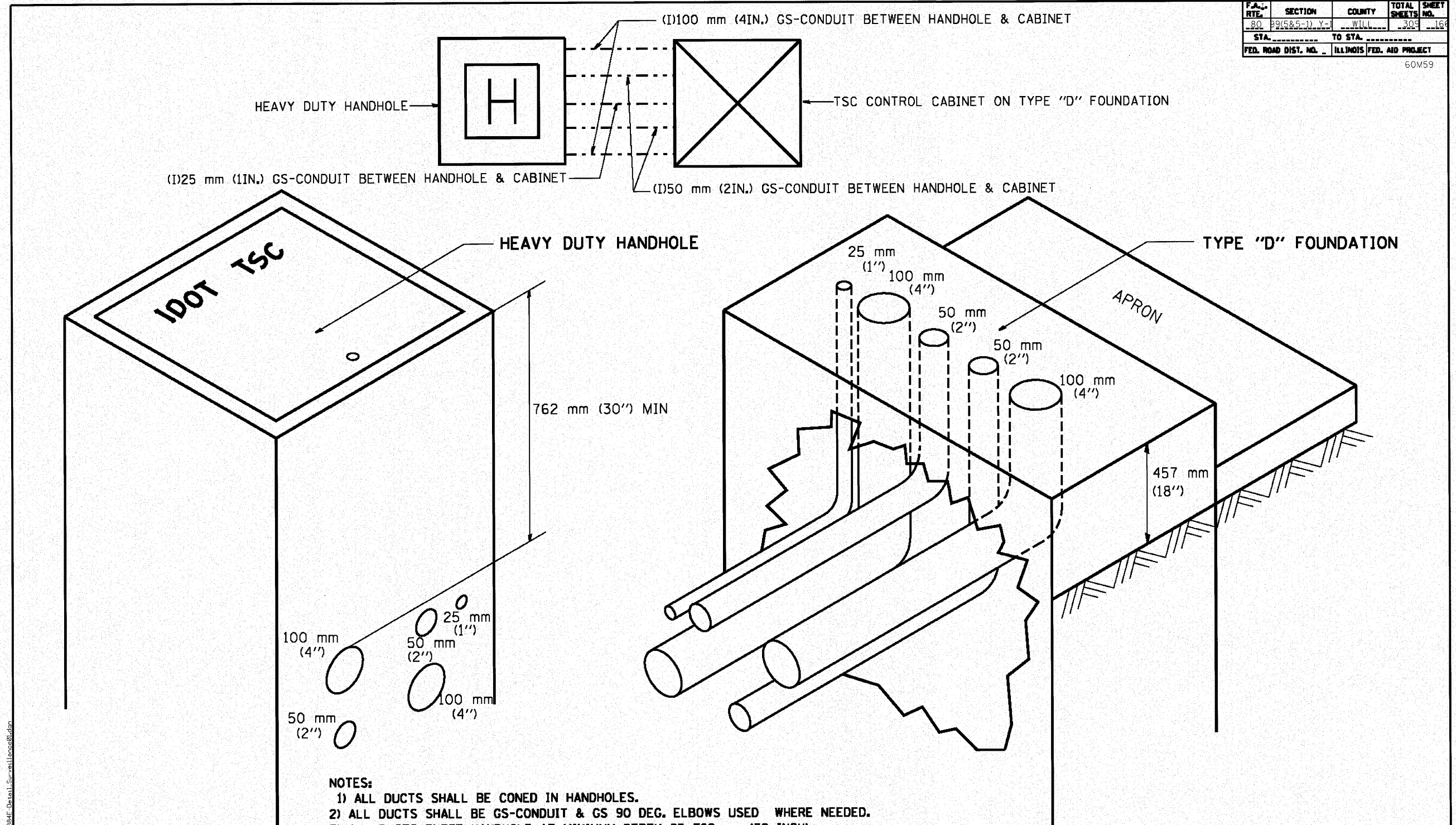


F.A. RTE.	SECTION	COUNTY	TOTAL SHEETS	SHEET NO.
80	P9(5&5-1) Y-1	WILL	303	166
STA. _____		TO STA. _____		
FED. ROAD DIST. NO. _____		ILLINOIS FED. AID PROJECT		

60M59



- NOTES:**
- 1) ALL DUCTS SHALL BE CONED IN HANDHOLES.
 - 2) ALL DUCTS SHALL BE GS-CONDUIT & GS 90 DEG. ELBOWS USED WHERE NEEDED.
 - 3) ALL DUCTS ENTER HANDHOLE AT MINIMUM DEPTH OF 762 mm (30 INCH)
 - 4) ALL HANDHOLE COVERS SHALL READ "IDOT TSC".
 - 5) ALL CABINET HANDHOLES SHALL BE HEAVY DUTY.
 - 6) DUCTS SHALL BE CENTERED IN CABINET FOUNDATION/HANDHOLE AS SHOWN.
 - 7) CONDUITS SHALL BE SPACED 305 mm (1 FOOT) CENTER TO CENTER IN HEAVY DUTY HANDHOLE.
 - 8) INSTALL 20 mm x 3 m (3/4" x 10') COPPER CLAD STEEL GROUND ROD IN HDHH PROVIDED AS CABINET PAD. EXOTHERMIC WELD CONNECTION FROM GROUND ROD TO #6 GROUND WIRE INSULATED (GREEN).
 - 9) BOND ALL GSC CONDUITS IN CABINET FOUNDATION.
 - 10) INSTALL #6 GROUND WIRE IN 25 mm (1") GSC FROM HANDHOLE TO CABINET.
 - 11) TYPE "D" FOUNDATION SHALL BE 18" FROM TOP OF FOUNDATION TO FINISHED GRADE.

REVISIONS	
NAME	DATE
T.C.	9/96
R.L.	3/99
R.L.	4/99

ILLINOIS DEPARTMENT OF TRANSPORTATION
TRAFFIC SYSTEMS CENTER
**CABINET - HANDHOLE
CONDUIT DETAIL**
SCALE: VERT. NONE
DATE: 6-5-95
DRAWN BY: G.N.
CHECKED BY: R.L.

RD-TYPE1.DGN
RF-
H:\2001\13984\3_Consulting\TSC\3034F_Detail_Surveillance.dwg

ENGINEERING CONSULTANT
Corbin Group, Inc.
CONSULTING ENGINEERS
1037 North Central Avenue, Suite 402
Chicago, Illinois 60610
Tel: 773.755.4000 Fax: 773.776.4014
www.corbin.com

VI-40011