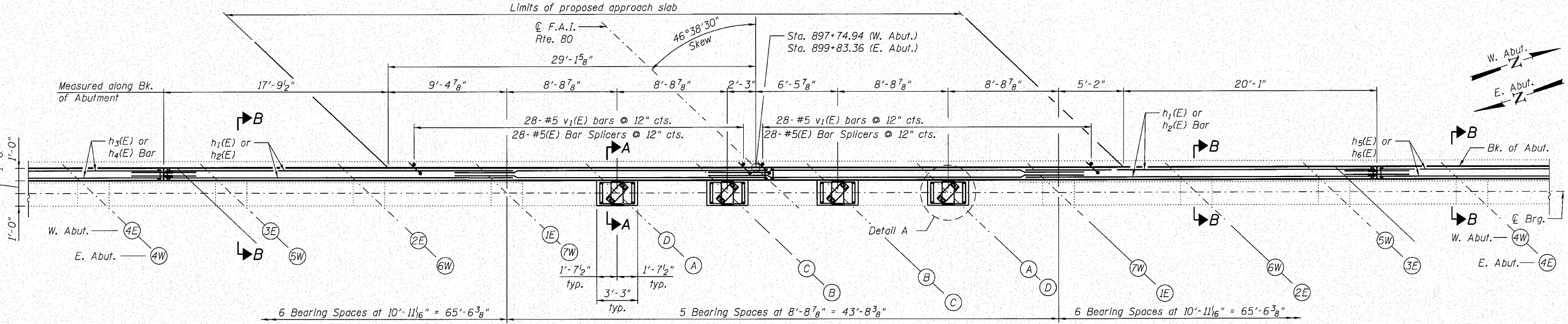


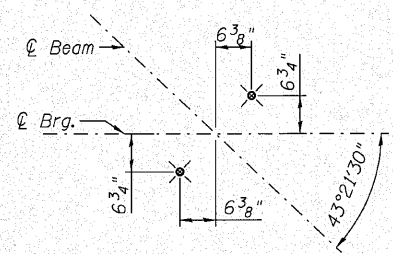
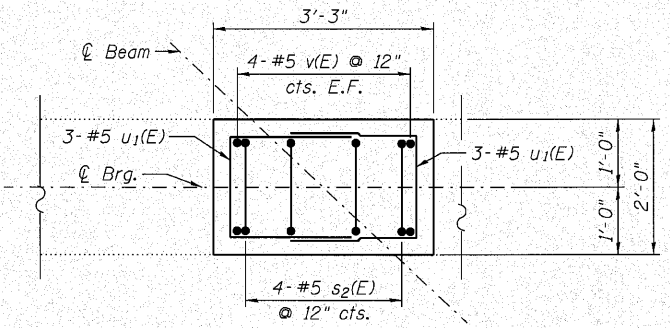
**MINIMUM BAR LAP**  
 #5 Bars = 3'-3"  
 #6 Bars = 3'-10"



- NOTES:**
1. For Sections A-A, B-B see Sheet S-21.
  2. For Bill of Materials, see Sheet S-21.
  3. Concrete Sealer to be applied to all exposed surfaces of exist. abutments and new pedestals.
  4. Bars indicated thus 2x5- #5 etc. indicates 2 lines of bars with 5 thus per line.
  5. For removal details see Sheet S-21.

**PEDESTAL HEIGHTS**

	Beam A	Beam B	Beam C	Beam D
W. Abut.	1'-3 <sup>1</sup> / <sub>2</sub> "	1'-1 <sup>7</sup> / <sub>8</sub> "	1'-0 <sup>5</sup> / <sub>8</sub> "	1'-2"
E. Abut.	1'-1 <sup>3</sup> / <sub>8</sub> "	11 <sup>3</sup> / <sub>4</sub> "	10"	11 <sup>1</sup> / <sub>2</sub> "



FILE NAME = m:\pro\3384\3 east\design\structural\1-80 over n&s\Acad\3384\_1-80 N&S 20 Abutments.dgn  
 USER NAME = rdenley  
 DESIGNED - BWS  
 CHECKED - EKM  
 DRAWN - RD  
 CHECKED - SCD  
 PLOT DATE = 10/28/2010  
 REVISIONS:  
 REVISED -  
 REVISED -  
 REVISED -  
 REVISED -  
 REVISED -  
 REVISED -  
 STATE OF ILLINOIS  
 DEPARTMENT OF TRANSPORTATION  
 ABUTMENT REPAIRS AND JOINT REPLACEMENT  
 STRUCTURE NO. 099-0070 (E.B.) & 099-0071 (W.B.)  
 SHEET NO. S-20 OF S-27 SHEETS  
 F.A.I. RTE. 80  
 SECTION 99(5&S-1) Y-1  
 COUNTY WILL  
 TOTAL SHEETS 309  
 SHEET NO. 208  
 CONTRACT NO. 60M59  
 ILLINOIS FED. AID PROJECT

**Clorba Group, Inc.**  
 CONSULTING ENGINEERS  
 300 North Commonwealth Avenue  
 Suite 100 Chicago, Illinois 60610  
 Tel: 773-777-2000  
 Fax: 773-777-2001  
 Email: info@clorba.com

**STATE OF ILLINOIS DEPARTMENT OF TRANSPORTATION**

**ABUTMENT REPAIRS AND JOINT REPLACEMENT**  
 STRUCTURE NO. 099-0070 (E.B.) & 099-0071 (W.B.)  
 SHEET NO. S-20 OF S-27 SHEETS

F.A.I. RTE. 80	SECTION 99(5&S-1) Y-1	COUNTY WILL	TOTAL SHEETS 309	SHEET NO. 208
			CONTRACT NO. 60M59	
ILLINOIS FED. AID PROJECT				