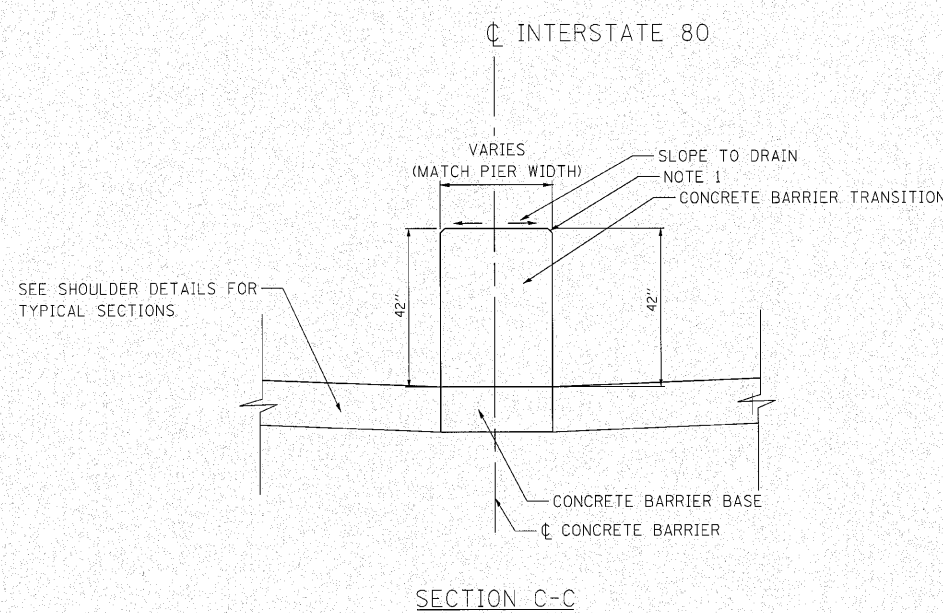
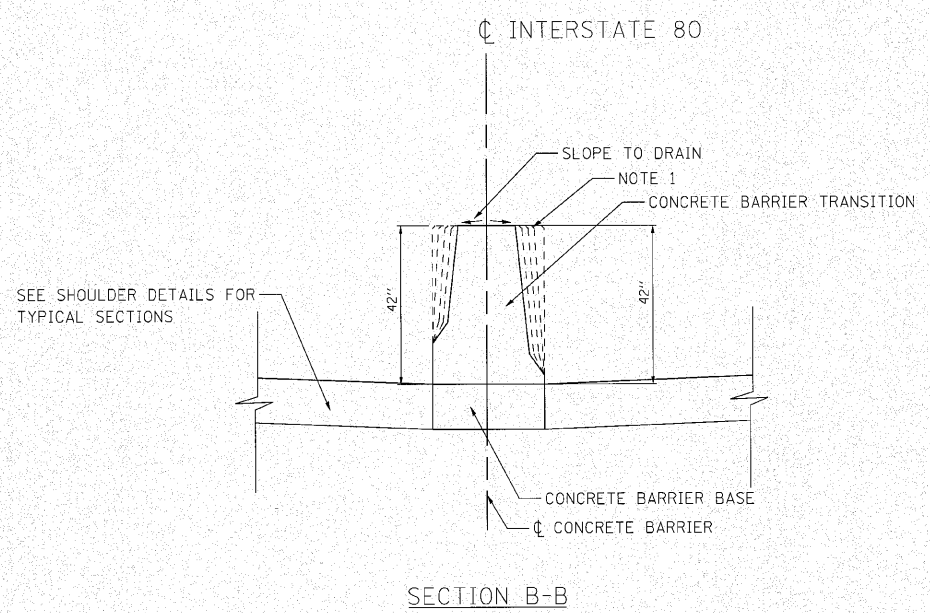


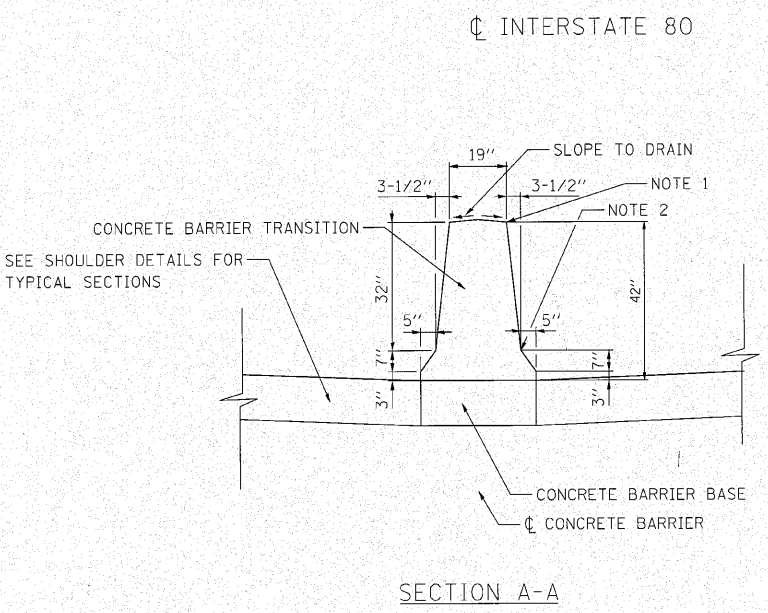
CONCRETE BARRIER TRANSITION AT WOLF ROAD PLAN VIEW



SECTION C-C



SECTION B-B



SECTION A-A

NOTE 1 - 3/4" CHAMFER OR 1" RADIUS (OPTIONAL)  
 NOTE 2 - 10" RADIUS (OPTIONAL)

GENERAL NOTES:

- SEE ROADWAY PLANS FOR EXACT TRANSITION DIMENSIONS.
- FURNISHING AND INSTALLING THE PREFORMED JOINT FILLER OF THE SIZE SPECIFIED SHALL BE INCLUDED IN THE COST OF THE CONCRETE BARRIER TRANSITION.
- FOR ADDITIONAL CONCRETE BARRIER DETAILS, SEE THE TYPICAL SECTIONS AND CONCRETE BARRIER DETAILS.
- FOR ADDITIONAL SHOULDER DETAILS, SEE THE TYPICAL SECTIONS.

M:\PROJ\308A\3\_Envt\Design\Detail\308A\Detail\LP-ar101.dwg

<b>Giorba Group, Inc.</b> CONSULTING ENGINEERS 8507 North Cicero Avenue, Suite 402 Chicago, Illinois 60634 Tel: 773.775.4000 Fax: 773.775.4014 Email: chicago@giorba.com	USER NAME = jkjelimen DESIGNED - CRC DRAWN - JMK CHECKED - MRJ PLOT DATE = 10/28/2010	DESIGNED - CRC DRAWN - JMK CHECKED - MRJ DATE = 10/27/2010	REVISED - REVISED - REVISED - REVISED -	<b>STATE OF ILLINOIS</b> <b>DEPARTMENT OF TRANSPORTATION</b>	<b>F.A.I. 80 FROM US 30 TO NS RAILROAD</b> <b>CONCRETE BARRIER TRANSITION DETAIL</b>	F.A.I. RTE. = 80 SECTION = 99(5&5-1) Y-1 COUNTY = WILL TOTAL SHEETS = 309 SHEET NO. = 216	CONTRACT NO. 60M59 ILLINOIS FED. AID PROJECT
	PLOT SCALE = 10.00' / 1"	SCALE: N.T.S. SHEET NO. OF SHEETS STA. TO STA.					