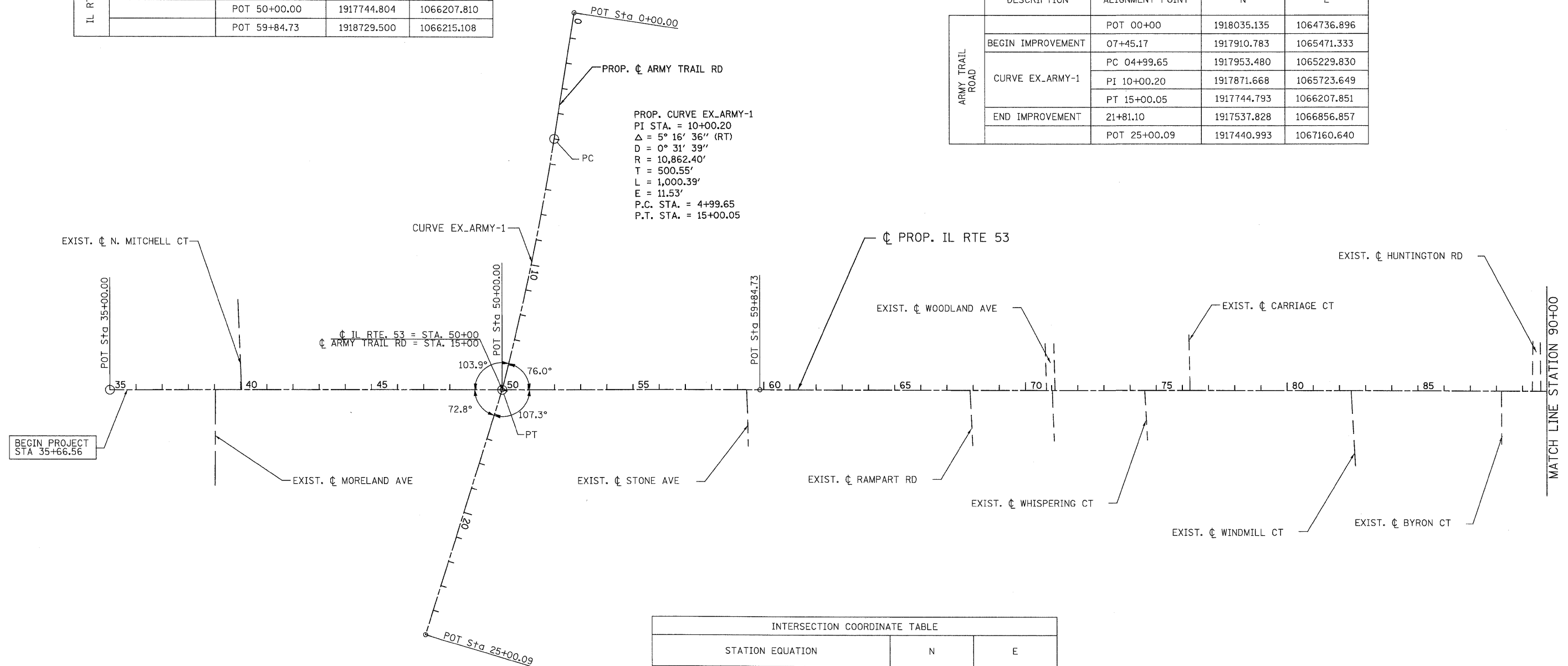


| IL RTE 53 COORDINATE TABLE | | | |
|----------------------------|-----------------|-------------|-------------|
| DESCRIPTION | ALIGNMENT POINT | N | E |
| IL RTE 53 | POT 35+00.00 | 1916244.852 | 1066195.464 |
| BEGIN PROJECT | 35+66.56 | 1916285.915 | 1066195.803 |
| | POT 50+00.00 | 1917744.804 | 1066207.810 |
| | POT 59+84.73 | 1918729.500 | 1066215.108 |

| SIDE ROAD COORDINATE TABLE | | | |
|----------------------------|-----------------|-------------|-------------|
| DESCRIPTION | ALIGNMENT POINT | N | E |
| ARMY TRAIL ROAD | POT 00+00 | 1918035.135 | 1064736.896 |
| BEGIN IMPROVEMENT | 07+45.17 | 1917910.783 | 1065471.333 |
| CURVE EX_ARMY-1 | PC 04+99.65 | 1917953.480 | 1065229.830 |
| | PI 10+00.20 | 1917871.668 | 1065723.649 |
| | PT 15+00.05 | 1917744.793 | 1066207.851 |
| END IMPROVEMENT | 21+81.10 | 1917537.828 | 1066856.857 |
| | POT 25+00.09 | 1917440.993 | 1067160.640 |

PROP. CURVE EX_ARMY-1
 PI STA. = 10+00.20
 $\Delta = 5^\circ 16' 36''$ (RT)
 $D = 0^\circ 31' 39''$
 $R = 10,862.40'$
 $T = 500.55'$
 $L = 1,000.39'$
 $E = 11.53'$
 P.C. STA. = 4+99.65
 P.T. STA. = 15+00.05



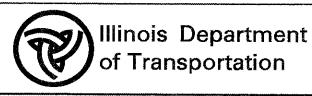
| INTERSECTION COORDINATE TABLE | | |
|-----------------------------------|-------------|-------------|
| STATION EQUATION | N | E |
| ϕ IL RTE. 53 = STA. 50+00 | 1917744.792 | 1066207.854 |
| ϕ ARMY TRAIL RD = STA. 15+00 | | |

PATRICK ENGINEERING INC.
 4970 VARSITY DRIVE
 LISLE, IL 60532
 patrickengineering.com

USER NAME = kcoepen@dky.Lisle
 PLOT CONFIG = PDFIGray_Large.plt
 PLOT SCALE = 1:200
 PLOT DATE = 11/10/2010

DESIGNED - CPK
 DRAWN - ERC
 CHECKED - JJC
 DATE - 11/10/2010

REVISED -
 REVISED -
 REVISED -
 REVISED -



ILLINOIS ROUTE 53
 ALIGNMENT PLAN
 SCALE: 1"=200' SHEET ATB-01 STA. B.O.P. TO STA. 90+00

| F.A. RTE. | SECTION | COUNTY | TOTAL SHEETS | SHEET NO. |
|---|--------------|--------|--------------|--------------------|
| 2578 | 2010-150-DTR | DUPAGE | 100 | 7 |
| FED. ROAD DIST. NO. ILLINOIS FED. AID PROJECT | | | | CONTRACT NO. 60N23 |

g:\dot\9396_a0_1153\dr-awings\62n23\tr-er-removal\cadd\sheet\019139797-sht-ATB-006-009.dgn