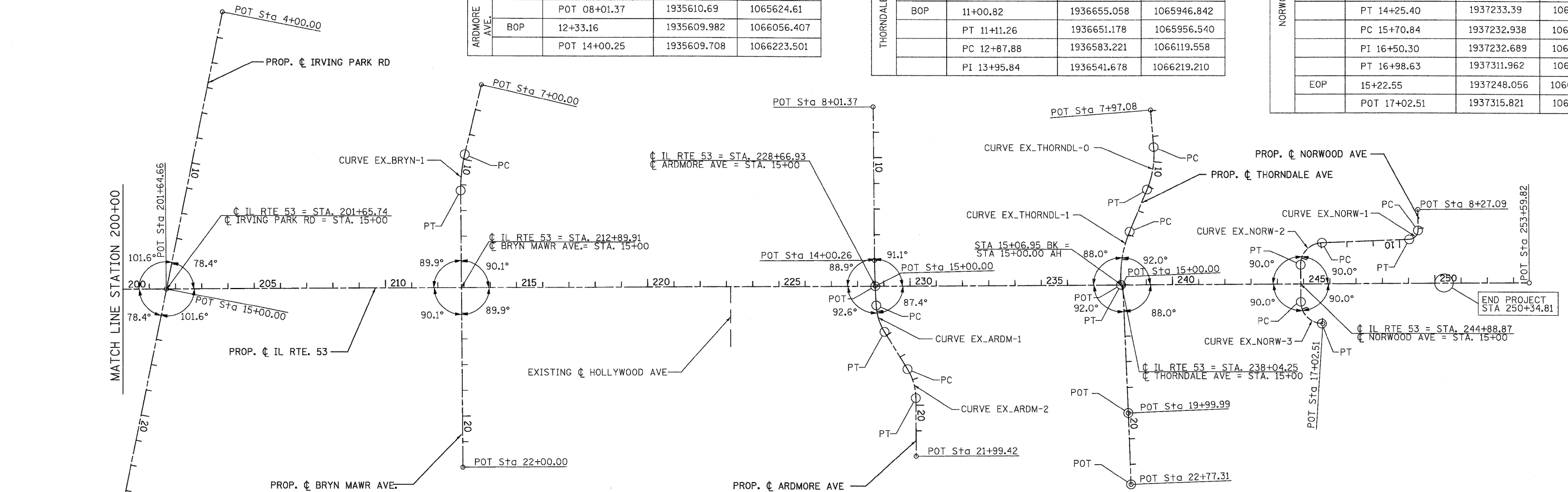


INTERSECTION COORDINATE TABLE		
STATION EQUATION	N	E
CL IL RTE 53 = STA. 201+65.74 CL IRVING PARK RD = STA. 15+00	1932910.020	1066315.587
CL IL RTE 53 = STA. 212+89.91 CL BRYN MAWR AVE. = STA. 15+00	1934034.206	1066319.094
CL IL RTE 53 = STA. 228+66.93 CL ARDMORE AVE = STA. 15+00	1935611.289	1066324.024
CL IL RTE 53 = STA. 238+04.25 CL THORNDALE AVE = STA. 15+00	19363548.544	1066326.952
CL IL RTE 53 = STA. 244+88.87 CL NORWOOD AVE = STA. 15+00	1937232.939	1066399.934

SIDE ROAD COORDINATE TABLE				
DESC.	ALIGNMENT POINT	N	E	
IRVING PARK ROAD	POT 04+00	1933133.460	1065238.518	
	BOP 04+06.69	19331132.098	1065245.075	
	POT 14+99.99	1932910.021	1066315.588	
	POT 26+85.23	1932668.010	1067475.838	
	EOP 25+00.00	1932705.829	1067294.519	
BRYN MAWR AVE.	POT 07+00.00	1934118.338	1065528.397	
	PC 09+80.42	1934052.038	1065800.871	
	PI 10+51.70	1934035.189	1065870.128	
	PT 11+22.31	1934035.029	4165941.412	
	BOP 12+87.41	1934034.671	1066106.510	
ARDMORE AVE.	EOP 18+81.49	1934033.372	1066700.584	
	POT 22+00.00	1934032.678	1067019.088	
	POT 08+01.37	1935610.69	1065624.61	
	BOP 12+33.16	1935609.982	1066056.407	
	POT 14+00.25	1935609.708	1066223.501	

SIDE ROAD COORDINATE TABLE				
DESC.	ALIGNMENT POINT	N	E	
ARDMORE AVE.	POT 15+00.00	1935611.228	1066323.241	
	PC 15+76.67	1935614.437	1066399.841	
	PI 16+31.81	1935616.748	1066454.928	
	PT 16+84.72	1935644.768	1066502.437	
	PC 18+54.63	1935731.108	1066648.748	
	PI 19+15.14	1935761.868	1066700.866	
	PT 19+72.74	1935761.638	1066761.389	
	EOP 18+00.00	1935703.350	1066601.697	
	POT 21+99.41	1935760.768	1066988.059	
	POT 07+97.08	1936668.059	1065646.412	
THORNDALE AVE.	PC 9+43.19	1936678.183	1065792.179	
	PI 10+28.77	1936651.181	1065877.548	
	BOP 11+00.82	1936655.058	1065946.842	
	PT 11+41.26	1936651.178	1065956.540	
	PC 12+87.88	1936583.221	1066119.558	
	PI 13+95.84	1936541.678	1066219.210	
	POT 15+00.00	1935611.228	1066323.241	
	PC 15+76.67	1935614.437	1066399.841	
	PI 16+31.81	1935616.748	1066454.928	
	PT 16+84.72	1935644.768	1066502.437	

SIDE ROAD COORDINATE TABLE				
DESC.	ALIGNMENT POINT	N	E	
THORNDALE AVE.	PT 15+00.00	1936548.540	1066326.948	
	POT 15+06.94	1936555.478	1066326.981	
	POT 20+00.00	1936571.248	1066826.726	
	EOP 20+13.12	1936571.620	1066839.839	
	POT 22+77.30	1936579.000	1067103.928	
	POT 08+27.09	1937682.262	1065528.397	
	BOP 11+00.00	1937510.325	1066163.786	
	PC 09+08.14	1937682.261	1066124.538	
	PI 09+42.15	1937682.258	1066158.56	
	PT 09+62.11	1937648.272	1066159.531	
NORWOOD AVE.	PC 12+95.22	1937315.319	1066169.809	
	PI 13+76.94	1937233.651	1066172.771	
	PT 14+25.40	1937233.39	1066254.491	
	PC 15+70.84	1937232.938	1066399.929	
	PI 16+50.30	1937232.689	1066479.388	
	PT 16+98.63	1937311.962	1066484.989	
	EOP 15+22.55	1937248.056	1066448.583	
	POT 17+02.51	1937315.821	1066485.258	
	POT 8+27.09	1937682.262	1065528.397	
	POT 253+59.82	1937315.821	1066485.258	



PROP. CURVE EX_BRYN-1	PROP. CURVE EX_ARDM-1	PROP. CURVE EX_ARDM-2	PROP. CURVE EX_THORNDL-0	PROP. CURVE EX_THORNDL-1	PROP. CURVE EX_NORW-1	PROP. CURVE EX_NORW-2	PROP. CURVE EX_NORW-3
PI STA. = 10+51.70	PI STA. = 16+31.81	PI STA. = 19+15.15	PI STA. = 10+28.77	PI STA. = 13+95.84	PI STA. = 9+42.15	PI STA. = 13+76.95	PI STA. = 16+50.30
Δ = 13° 33' 00" (LT)	Δ = 28° 08' 23" (LT)	Δ = 30° 45' 40" (RT)	Δ = 26° 36' 06" (RT)	Δ = 26° 16' 32" (LT)	Δ = 88° 21' 46" (RT)	Δ = 87° 44' 52" (LT)	Δ = 86° 08' 30" (LT)
D = 9° 32' 57"	D = 26° 02' 37"	D = 26° 02' 37"	D = 15° 49' 39"	D = 12° 23' 14"	D = 163° 42' 08"	D = 67° 24' 24"	D = 67° 24' 24"
R = 600.00'	R = 220.00'	R = 220.00'	R = 362.00'	R = 462.54'	R = 35.00'	R = 85.00'	R = 85.00'
T = 71.28'	T = 55.14'	T = 60.52'	T = 85.58'	T = 107.96'	T = 34.01'	T = 81.72'	T = 79.46'
L = 141.90'	L = 108.05'	L = 118.11'	L = 168.07'	L = 212.12'	L = 53.98'	L = 130.18'	L = 127.79'
E = 4.22'	E = 6.80'	E = 8.17'	E = 9.98'	E = 12.43'	E = 13.81'	E = 32.91'	E = 31.36'
P.C. STA. = 9+80.42	P.C. STA. = 15+76.68	P.C. STA. = 18+54.63	P.C. STA. = 9+43.19	P.C. STA. = 12+87.89	P.C. STA. = 9+08.14	P.C. STA. = 12+95.22	P.C. STA. = 15+70.84
P.T. STA. = 11+22.32	P.T. STA. = 16+84.72	P.T. STA. = 19+72.75	P.T. STA. = 11+11.27	P.T. STA. = 15+00.00	P.T. STA. = 9+62.12	P.T. STA. = 14+25.40	P.T. STA. = 16+98.64

IL RTE 53 COORDINATE TABLE			
DESCRIPTION	ALIGNMENT POINT	N	E
IL RTE 53	POT 201+64.66	1932908.972	1066315.578
	POT 253+59.82	1938104.112	1066331.810

PATRICK ENGINEERING INC. 4570 VARSITY DRIVE LISLE, IL 60532 patrickengineering.com	USER NAME = tkoeppen(Rdwy_Lisle) PLOT CONFIG = PLOT(Gray_Large).plt PLOT SCALE = 1:200 PLOT DATE = 11/10/2010	DESIGNED - CPK DRAWN - ERC CHECKED - JJC DATE - 11/10/2010	REVISED - REVISED - REVISED - REVISED -	Illinois Department of Transportation	SCALE: 1"=200' SHEET ATB-04 STA. 200+00 TO STA. E.O.P.	ILLINOIS ROUTE 53 ALIGNMENT PLAN	F.A. RTE. 2578 SECTION 2010-150-DTR COUNTY TOTAL SHEETS 100 SHEET NO. 10 DUPAGE CONTRACT NO. 60N23
	FED. ROAD DIST. NO. ILLINOIS FED. AID PROJECT						

q:\dot\9356-a2(1153)\drawings\68n23\trereoval\oad sheets\19139797-sht-ATB-026-029.dgn