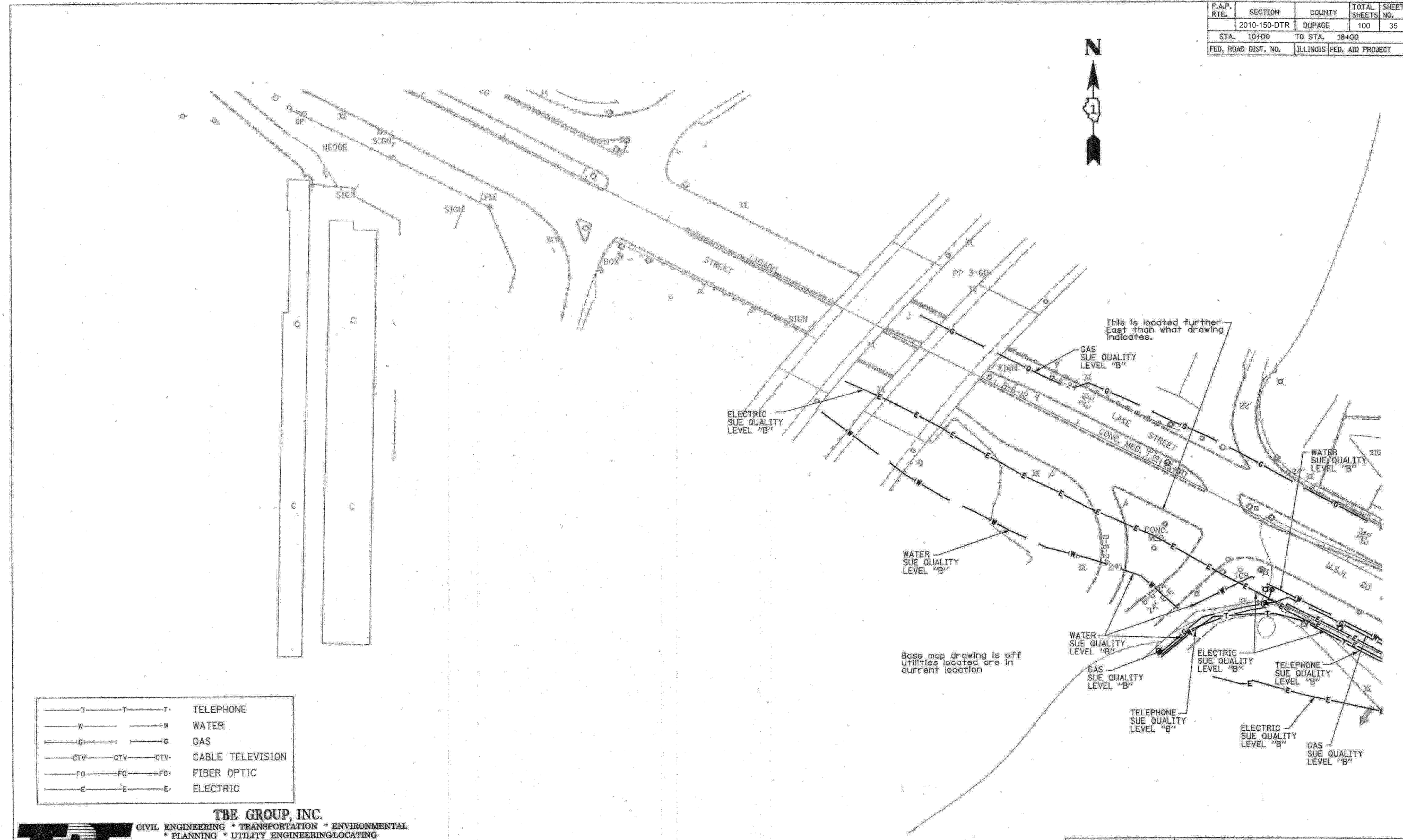
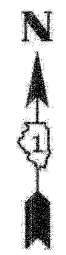


F.A.P. RTE.	SECTION	COUNTY	TOTAL SHEETS	SHEET NO.
2010-150-DTR	DUPAGE	100	35	
STA. 10+00	TO STA. 18+00			
FED. ROAD DIST. NO.	ILLINOIS FED. AID PROJECT			



—T—T—T—	TELEPHONE
—W—W—W—	WATER
—G—G—G—	GAS
—CTV—CTV—CTV—	CABLE TELEVISION
—FO—FO—FO—	FIBER OPTIC
—E—E—E—	ELECTRIC

TBE GROUP, INC.
 CIVIL ENGINEERING * TRANSPORTATION * ENVIRONMENTAL
 * PLANNING * UTILITY ENGINEERING/LOCATING
 SOUTHERN REGION: FL, GA, SC, NC
 NORTHERN REGION: IL, IN, MI, OH, MD, NJ, NY
 PA, VA, CANADA
 WESTERN REGION: AZ, NV, NM, TX, CA, OR, UT, WA
 IL 09500146, IL 09500151, IL 09500152, IL 09500175
 TBE SUE PAGE NO: 10 OF 20
 Signature: *[Handwritten Signature]*
 SUE Quality Level "B" : Designating



205 W. WACKER DRIVE
 SUITE 1020
 CHICAGO, IL 60606
 (312) 704-1970

Utility shown on these plans as depicted in the legend have been investigated by TBE Group, Inc in accordance with SUE Industry Standards as of 5/27/03.
 All other information shown has been provided to TBE Group, Inc by others.

REVISIONS	
NAME	DATE

ILLINOIS DEPARTMENT OF TRANSPORTATION
 SUBSURFACE UTILITY ENGINEERING
 IL RT. 53 (ROHLWING ROAD)
 FROM MORELAND AVE TO HUNTINGTON AVE
 CONTRACT NO. 60477
 SCALE : 1:50
 DATE - 7/14/03
 DRAWN BY - KLC
 CHECKED BY -