

Section 25, Township 40 North, Range 10 East of the 3rd P.M., DuPage County, Illinois

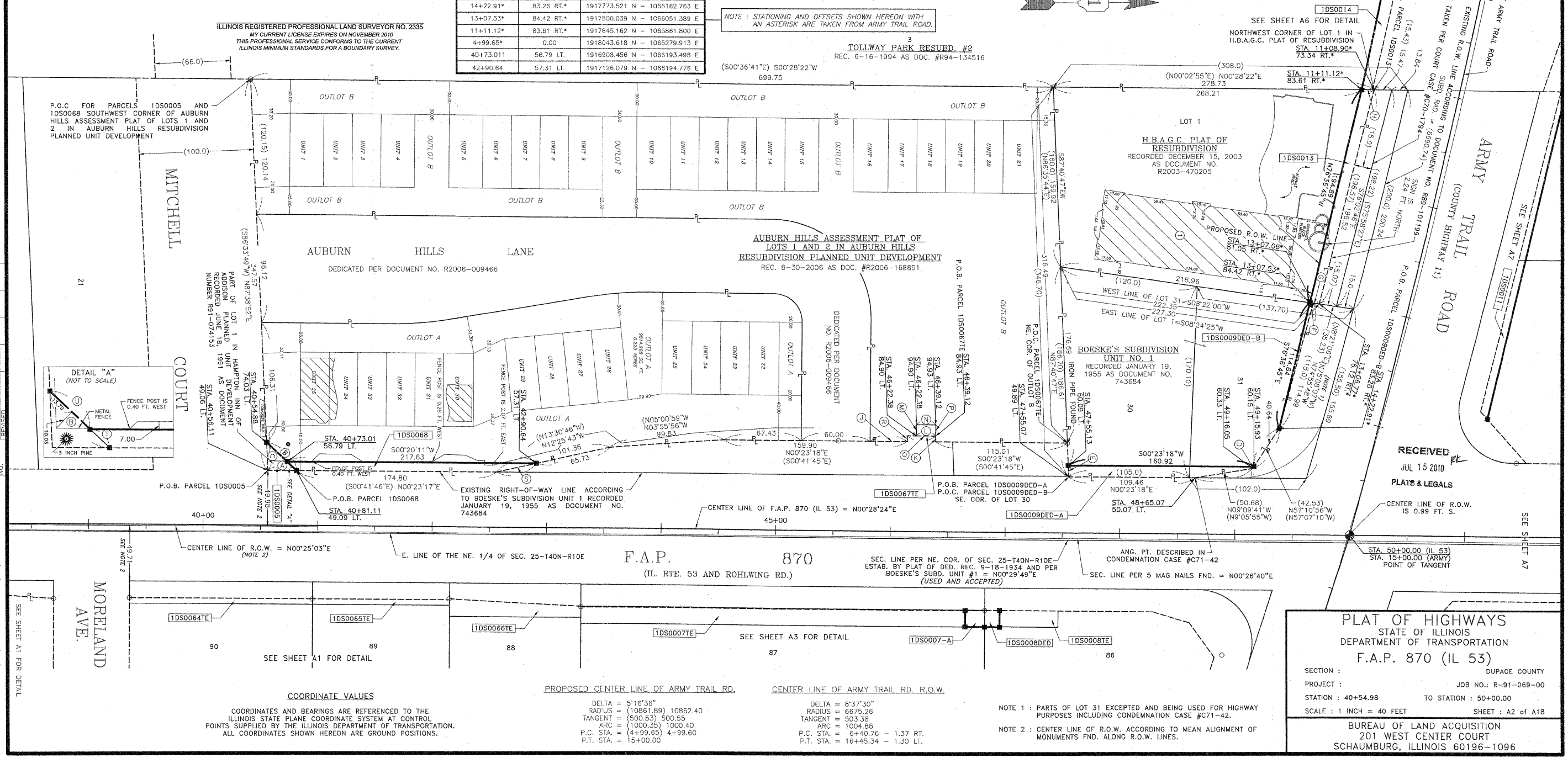
Table with columns: PARCEL, OWNER, PERMANENT TAX NUMBER, TOTAL HOLDING ACRES, AREA TAKEN ACRES, PREVIOUSLY DEDICATED ACRES, EASEMENT ACRES, REMAINDER ACRES, ACQUIRED BY. Rows include parcels 1DS0005, 1DS0067E, 1DS0009DE-A, 1DS0009DE-B, 1DS0013, and 1DS0068.

LINE LEGEND table with columns: LINE ID, BEARING, DISTANCE. Includes entries for iron pipe, cut cross, stakes, proposed right-of-way, and permanent survey markers.

LEGEND table with symbols and descriptions for section lines, quarter section lines, platted lot lines, property lines, center lines, and existing buildings.

COORDINATE SCHEDULE table with columns: STATION, OFFSET, COORDINATES. Lists stationing points from 40+54.88 to 42+90.64 with their respective offsets and coordinates.

STATE OF ILLINOIS COUNTY OF DUPAGE. THIS IS TO CERTIFY THAT I, DOMINIC J. MARCHESI, AN ILLINOIS PROFESSIONAL LAND SURVEYOR, HAVE SURVEYED THE PLAT OF HIGHWAYS SHOWN HEREON BETWEEN SECTION 25, TOWNSHIP 40 NORTH, RANGE 10 EAST AND SECTION 19, TOWNSHIP 40 NORTH, RANGE 11 EAST OF THE THIRD PRINCIPAL MERIDIAN, DUPAGE COUNTY, THAT THE SURVEY IS TRUE AND COMPLETE AS SHOWN TO THE BEST OF MY KNOWLEDGE AND BELIEF...



Marchese and Sons, Inc. land - marine - construction surveys. 10 MONACO DRIVE, ROSSELLE, IL 60172. PHONE: (630) 884-5880 FAX: (630) 884-8869

PLAT OF HIGHWAYS STATE OF ILLINOIS DEPARTMENT OF TRANSPORTATION F.A.P. 870 (IL 53). Includes project details for Dupage County, station 40+54.98 to 50+00.00, scale 1 inch = 40 feet, and recording information.