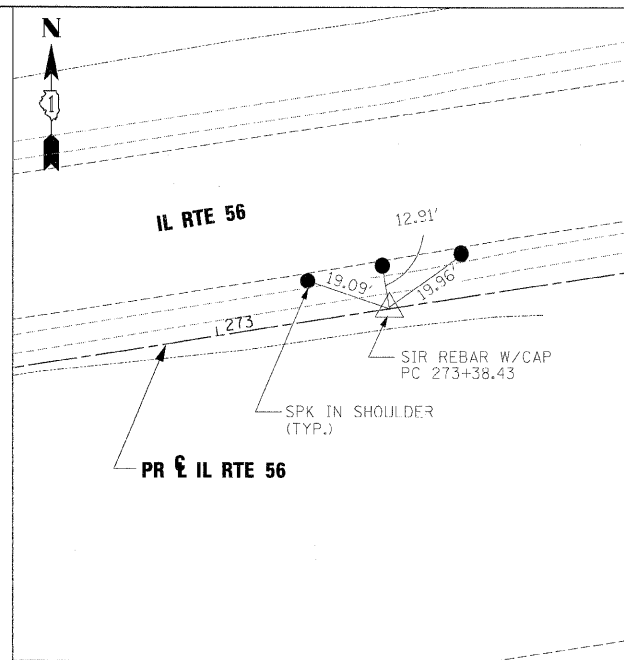
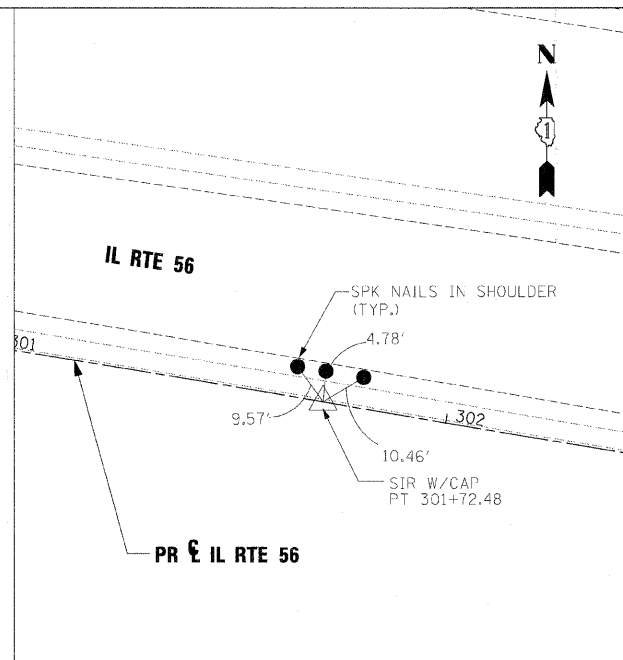


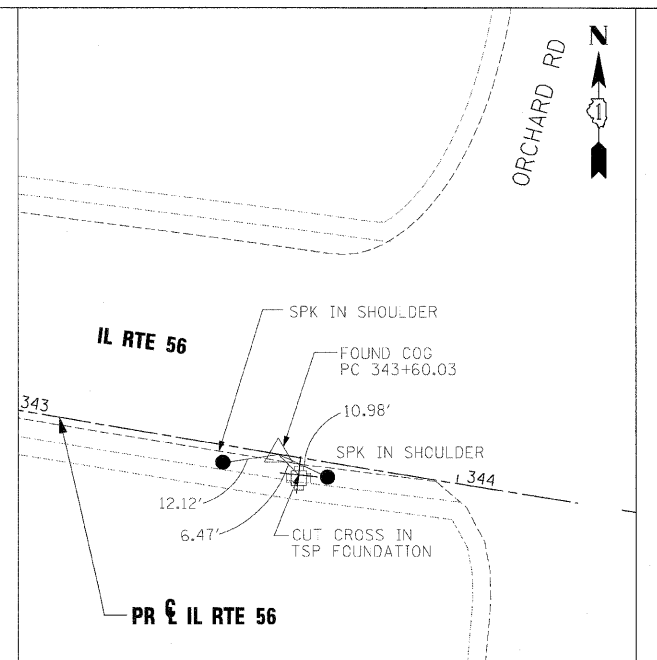
PT STA. 263+33.07



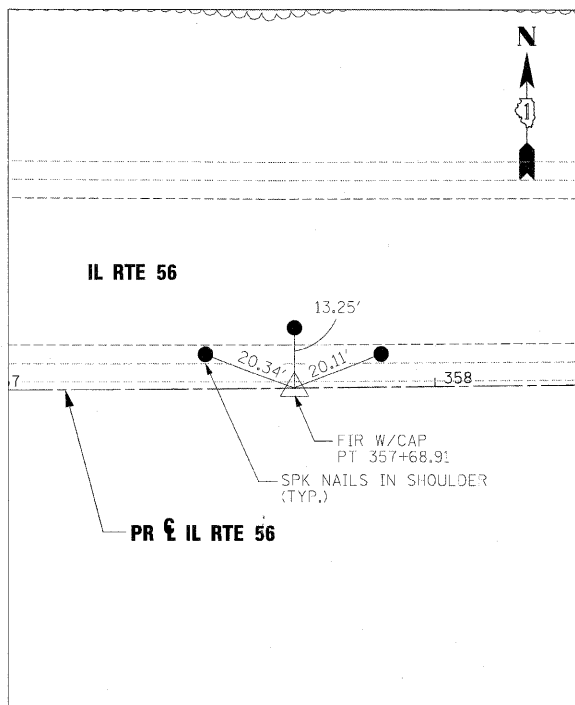
PC STA. 273+38.43



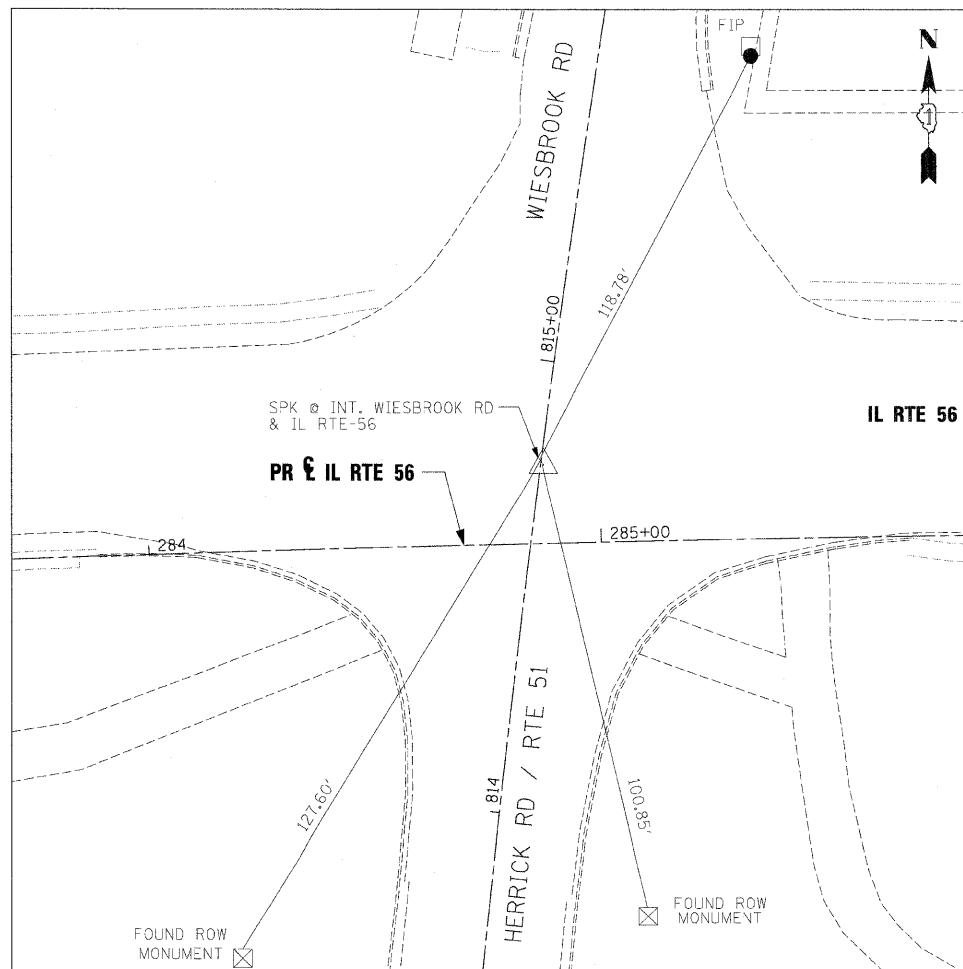
PT STA. 301+72.48



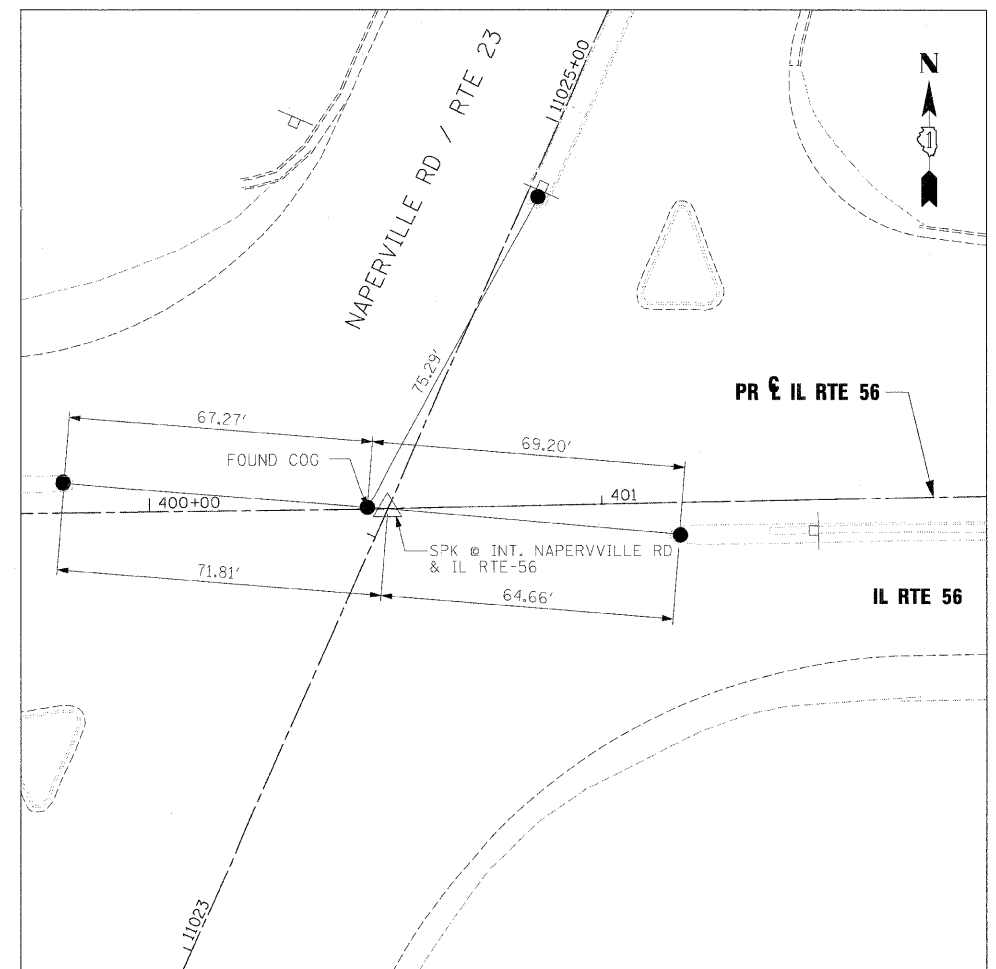
PC STA. 343+60.03



PT STA. 357+68.91



SPIKE NAIL @ INTERSECTION IL RTE 56 AND HERRICK RD / RTE 51 / WIESBROOK RD



SPIKE NAIL @ INTERSECTION IL RTE 56 AND NAPERVILLE RD / RTE 23

FILE NAME =	DESIGNED - JMM	REVISED -
... \DIB2419-sh1-ABT4.dgn	DRAWN - TMB	REVISED -
USER NAME = tblank	CHECKED - RMT	REVISED -
PLOT DATE = 12/7/2010	DATE - 12/6/10	REVISED -

**benesch**

**STATE OF ILLINOIS  
DEPARTMENT OF TRANSPORTATION**

**ALIGNMENT AND TIES**

SCALE: 1"=250' SHEET NO. 4 OF 4 SHEETS STA. TO STA.

F.A.P. RTE.	SECTION	COUNTY	TOTAL SHEETS	SHEET NO.
365	(57 & 58)WRS-2	DUPAGE	681	42
CONTRACT NO. 62419			ILLINOIS FED. AID PROJECT	