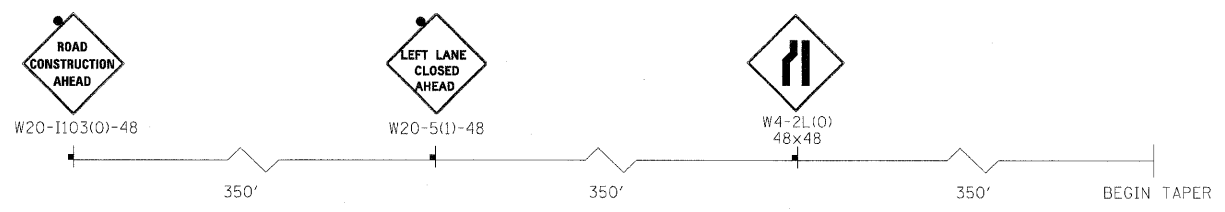


SEE ADVANCE SIGNAGE  
NORTHBOUND NAPERVILLE ROAD

PRIVATE ENTRANCES:  
CONTRACTOR TO MAINTAIN  
ACCESS FOR THE DURATION  
OF THE PROJECT.



**ADVANCE SIGNING FOR NORTHBOUND NAPERVILLE ROAD**

- LEGEND**
- WORK AREA
  - TEMPORARY PAVEMENT PLACED PREVIOUS STAGE
  - TEMPORARY PAVEMENT PLACED THIS STAGE
  - FLASHING ARROW BOARD
  - TRAFFIC LANE
  - TYPE III BARRICADES
  - VERTICAL PANELS @ 200' UNLESS OTHERWISE SHOWN
  - TEMPORARY SIGN
  - DRUMS @ 50' CENTERS UNLESS OTHERWISE SHOWN
  - IMPACT ATTENUATOR
  - PROPOSED ROW
  - EXISTING ROW
  - TEMPORARY EASEMENT
- ① WET TEMPORARY PAVEMENT MARKING TAPE, TYPE III, LETTERS AND SYMBOLS (WHITE)
  - ② WET TEMPORARY PAVEMENT MARKING TAPE, TYPE III, 4 INCH (WHITE)
  - ③ WET TEMPORARY PAVEMENT MARKING TAPE, TYPE III, 4 INCH (YELLOW)
  - ④ WET TEMPORARY PAVEMENT MARKING TAPE, TYPE III, 6 INCH (WHITE)
  - ⑤ WET TEMPORARY PAVEMENT MARKING TAPE, TYPE III, 12 INCH (WHITE)
  - ⑥ WET TEMPORARY PAVEMENT MARKING TAPE, TYPE III, 12 INCH (YELLOW)
  - ⑦ WET TEMPORARY PAVEMENT MARKING TAPE, TYPE III, 24 INCH (WHITE)

FILE NAME =	DESIGNED - JMM	REVISED -
...N0162419-sh-NAP_s-logingl-18.dgn	DRAWN - TMB	REVISED -
USER NAME = tblank	CHECKED - RMT	REVISED -
PLOT DATE = 12/7/2010	DATE - 12/6/10	REVISED -

**benesch**

**STATE OF ILLINOIS  
DEPARTMENT OF TRANSPORTATION**

**MAINTENANCE OF TRAFFIC PLAN  
STAGE 1 NAPERVILLE /IL RTE 56**

SCALE: 1"=50'    SHEET NO. 41 OF 112 SHEETS    STA. POB TO STA. 11019+00

F.A.P. RTE.	SECTION	COUNTY	TOTAL SHEETS	SHEET NO.
365	(57 & 58)WRS-2		681	133
CONTRACT NO. 62419			ILLINOIS FED. AID PROJECT	