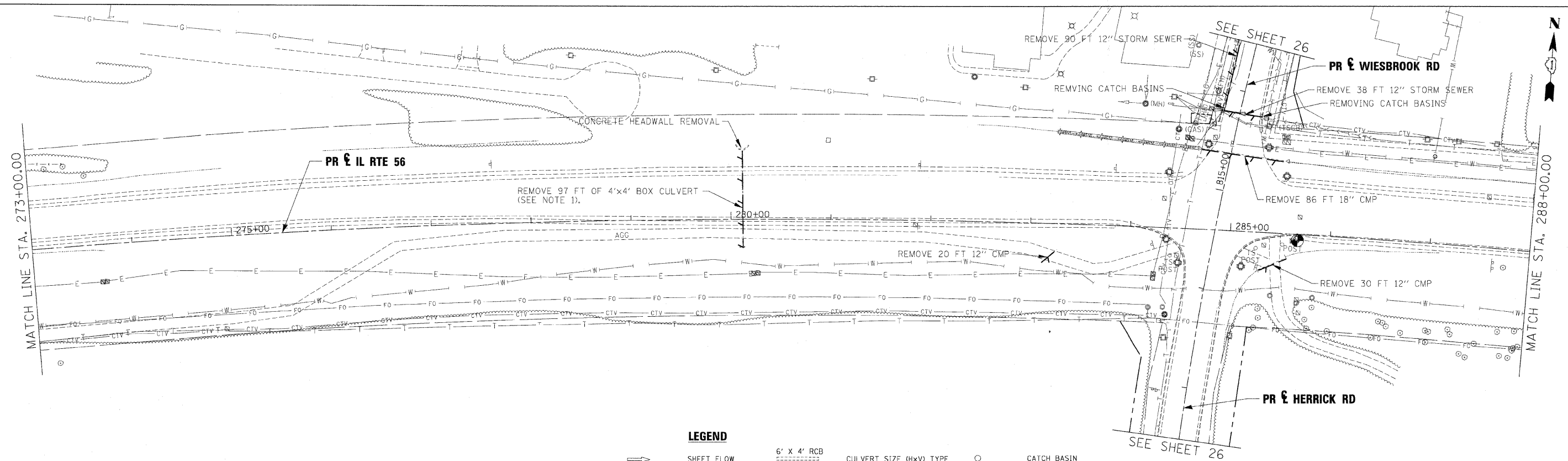


| | |
|----------------|-----------|
| DATE | BY |
| SURVEYED | PLOTTED |
| ALIGNED | CHECKED |
| NOTE BOOK | NO. _____ |
| CADD FILE NAME | NO. _____ |
| PLAN | |

| | |
|---------------------|-----------|
| DATE | BY |
| SURVEYED | PLOTTED |
| GRADES CHECKED | NO. _____ |
| STRUCTURE NOTATIONS | NO. _____ |
| PROFILE | |

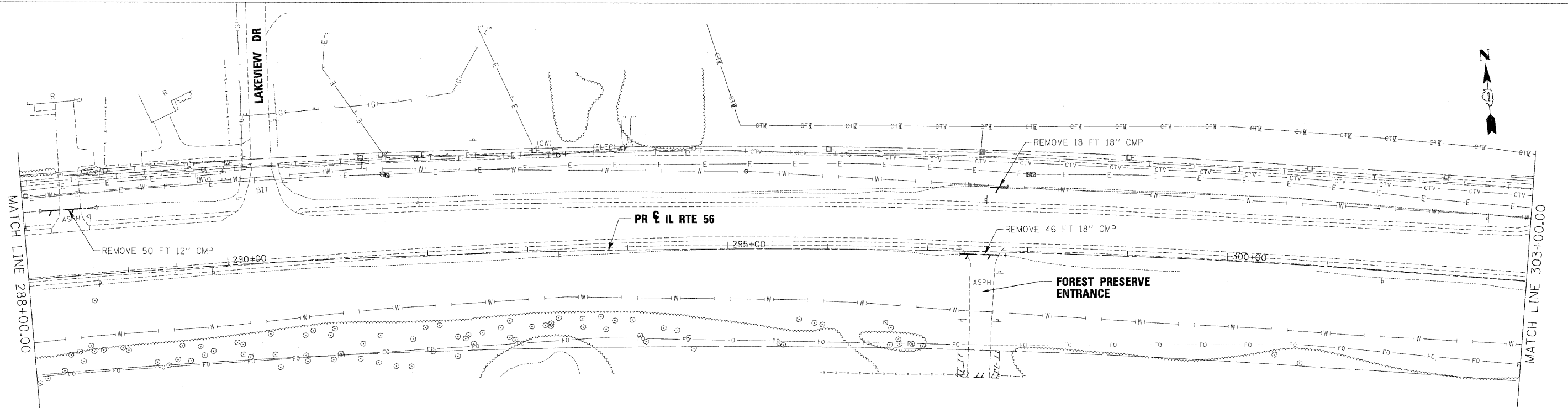


LEGEND

| | | | | | |
|--|------------|--|-------------------------|--|-------------|
| | SHEET FLOW | | 6' X 4' RCB | | CATCH BASIN |
| | SWALE | | CULVERT SIZE (HxV) TYPE | | HEADWALL |
| | DITCH | | BRIDGE LOCATION | | INLET |
| | CHANNEL | | STORM SEWER | | MANHOLE |
| | | | LOCAL STORM SEWER | | |
| | | | END SECTION | | |
| | | | OUTLET | | |

NOTES:

- EXISTING STORM SEWER REMOVAL OR CULVERT REMOVAL WILL NOT BE PAID FOR SEPARATELY WHEN LOCATED WITHIN THE PROPOSED STORM SEWER OR CULVERT TRENCH. THIS WORK TO BE CONSIDERED AS PART OF THE PROPOSED STORM SEWER OR CULVERT INSTALLATION AND WILL NOT BE PAID SEPARATELY.
- STORM SEWER REMOVAL TO BE PAID FOR AS STORM SEWER REMOVAL XX" (PAY ITEM 5510XXXX)



| | | |
|-----------------------|----------------|-----------|
| USER NAME = | DESIGNED - KEM | REVISED - |
| PLOT SCALE = 1" = 50' | DRAWN - KEM | REVISED - |
| PLOT DATE = | CHECKED - LSM | REVISED - |
| | DATE - 12/6/10 | REVISED - |



STATE OF ILLINOIS
DEPARTMENT OF TRANSPORTATION

| | |
|------------------------------------|-------------------------|
| DRAINAGE REMOVAL PLAN IL RTE 56 | |
| SCALE: 1"=50' | SHEET NO. 2 OF 9 SHEETS |
| STA. 273+00.00 TO STA. 303+00.00 | |

| | | | | |
|--------------------|----------------|--------|---------------------------|-----------|
| F.A.P. RTE. | SECTION | COUNTY | TOTAL SHEETS | SHEET NO. |
| 365 | (57 & 58)WRS-2 | DUPAGE | 681 | 253 |
| CONTRACT NO. 62419 | | | ILLINOIS FED. AID PROJECT | |