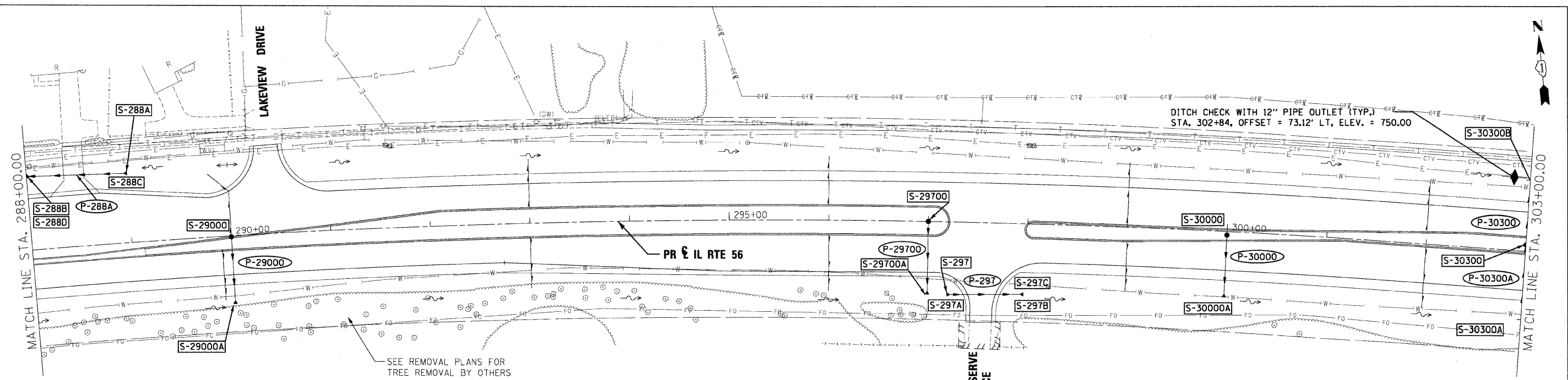


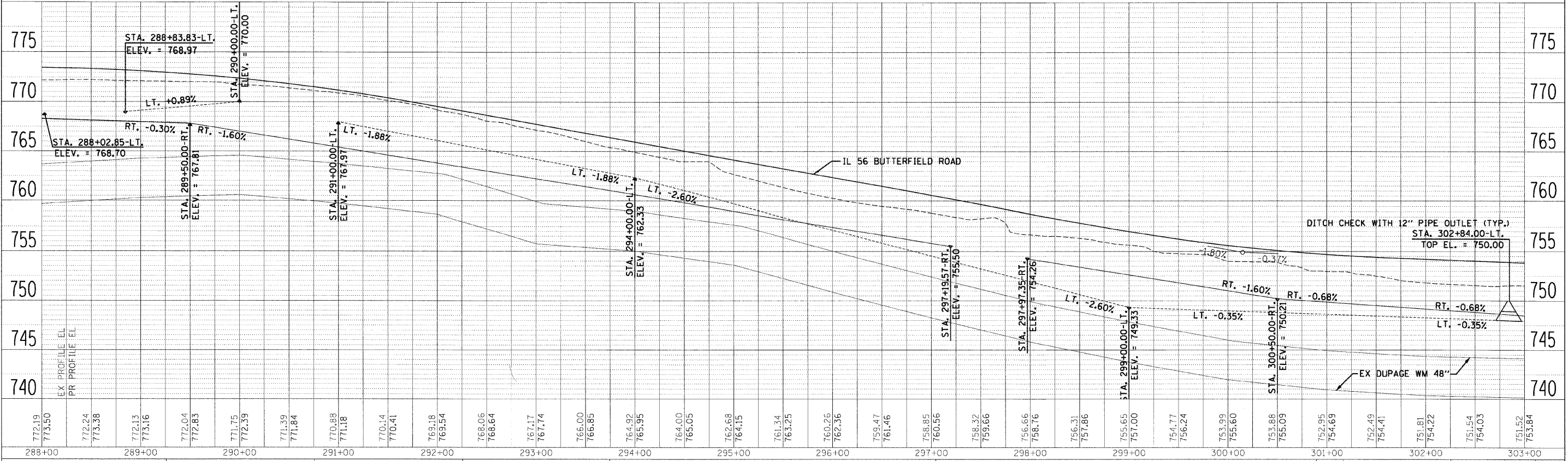
DATE	BY
REVISIONS	PLotted
NOTE BOOK	ALIGNMENT CHECKED
NO.	STRUCTURE NOTATIONS CHECKED
	CADD FILE NAME
	NO.

DATE	BY
REVISIONS	Plotted
NOTE BOOK	GRADES CHECKED
NO.	STRUCTURE NOTATIONS CHECKED



LEGEND

- FLOODPLAIN BOUNDARY
- - - FLOODWAY BOUNDARY
- SHEET FLOW
- ⇄ SWALE
- ~ DITCH
- CHANNEL
- 6' x 4' RCB
- CULVERT SIZE (HxV) TYPE
- △ END SECTION
- ⇄ DITCH HIGH POINT
- F-F- FURROW
- 4" PIPE UNDERDRAIN
- PROPOSED STORM SEWER
- PROPOSED CATCH BASIN
- PROPOSED MANHOLE
- PROPOSED END SECTION
- PROPOSED DITCH
- PROPOSED HEADWALL
- CATCH BASIN
- HEADWALL
- INLET
- MANHOLE
- ADJUST



FILE NAME =	DESIGNED - KEM	REVISED -		STATE OF ILLINOIS DEPARTMENT OF TRANSPORTATION				DRAINAGE PLAN AND PROFILE IL RTE 56				F.A.P. RTE. 365	SECTION 157 & 58 WRS-2	COUNTY DUPAGE	TOTAL SHEETS 681	SHEET NO. 269
USER NAME =	CHECKED - LSM	REVISED -										CONTRACT NO. 62419				
PLDT DATE =	DATE - 12/6/10	REVISED -										ILLINOIS FED. AID PROJECT				
												SCALE: 1"=50'	SHEET NO. 4 OF 18 SHEETS	STA. 288+00.00 TO STA. 303+00.00		