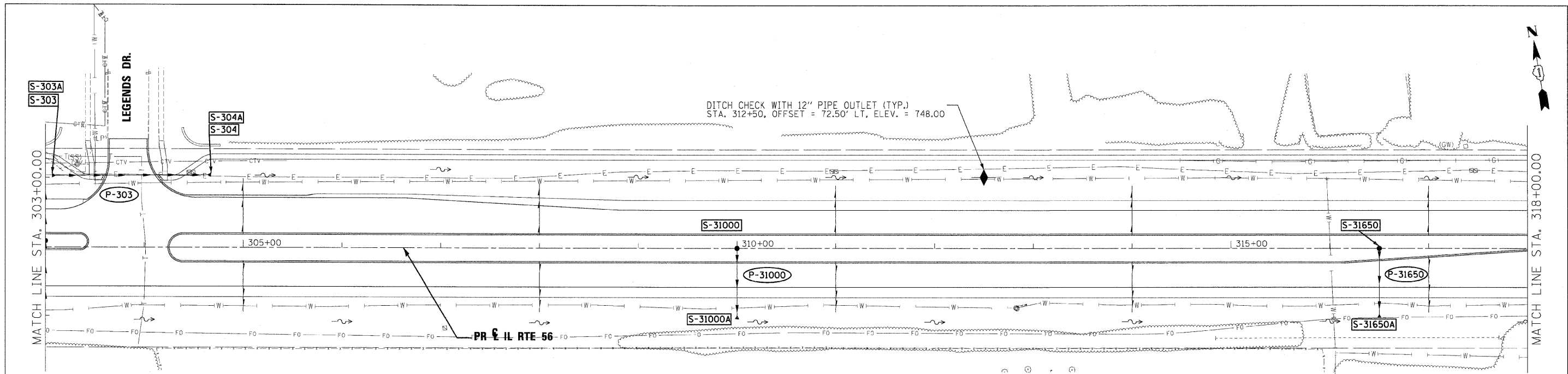


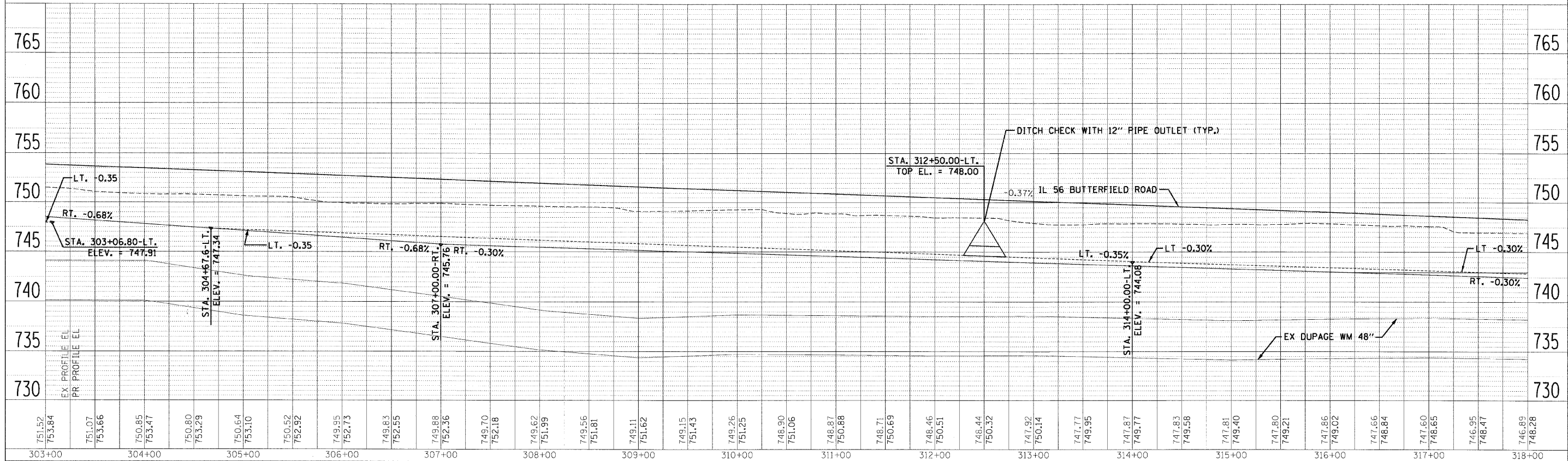
DATE	
BY	
DESIGNED	
CHECKED	
PLANNED	
NO.	

DATE	
BY	
DESIGNED	
CHECKED	
PLANNED	
NO.	



**LEGEND**

- FLOODPLAIN BOUNDARY
- - - FLOODWAY BOUNDARY
- SHEET FLOW
- SWALE
- DITCH
- CHANNEL
- 6' X 4' RCB
- △ END SECTION
- ← DITCH HIGH POINT
- F - F - FURROW
- 4" PIPE UNDERDRAIN
- PROPOSED STORM SEWER
- PROPOSED CATCH BASIN
- PROPOSED MANHOLE
- PROPOSED END SECTION
- PROPOSED DITCH
- PROPOSED HEADWALL
- CATCH BASIN
- HEADWALL
- INLET
- MANHOLE
- ADJUST



FILE NAME =	DESIGNED - KEM	REVISED -		<b>STATE OF ILLINOIS</b> <b>DEPARTMENT OF TRANSPORTATION</b>				<b>DRAINAGE PLAN AND PROFILE</b> <b>IL RTE 56</b>				F.A.P. RT. = 365	SECTION (57 & 58)WRS-2	COUNTY DUPAGE	TOTAL SHEETS 681	SHEET NO. 270			
USER NAME =	DRAWN - KEM	REVISED -										SCALE: 1"=50'	SHEET NO. 5	OF 18 SHEETS	STA. 303+00.00 TO STA. 318+00.00	ILLINOIS FED. AID PROJECT			
CHECKED - LSM	DATE - 12/6/10	REVISED -																	
DATE =																			