

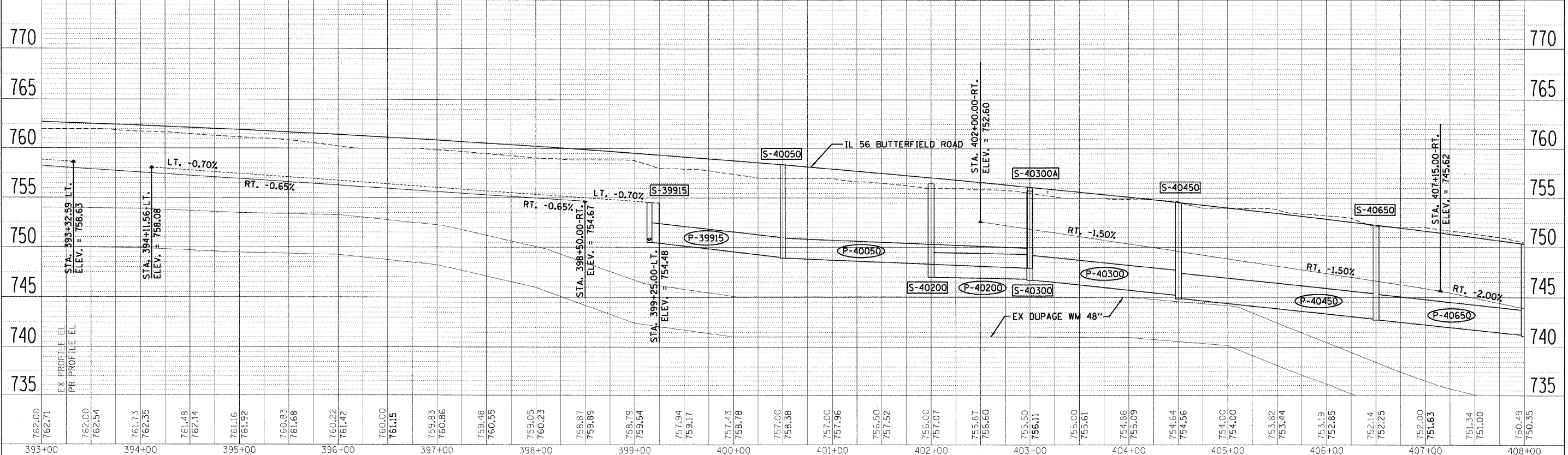
LEGEND

- FLOODPLAIN BOUNDARY
- FLOODWAY BOUNDARY
- SHEET FLOW
- SWALE
- DITCH
- CHANNEL
- 6" X 4" RCB
- STORM SEWER
- END SECTION
- DITCH HIGH POINT
- FURROW
- 4" PIPE UNDERDRAIN
- PROPOSED STORM SEWER
- PROPOSED CATCH BASIN
- PROPOSED MANHOLE
- PROPOSED END SECTION
- PROPOSED DITCH
- PROPOSED HEADWALL
- CATCH BASIN
- HEADWALL
- INLET
- MANHOLE
- ADJUST

SEE SHEET 278 FOR CALLOUTS OF STRUCTURES AND PIPES ALONG NAPERVILLE ROAD.

DATE	BY
DESIGNED	BY
DRAWN	BY
CHECKED	BY
DATE	BY

DATE	BY
DESIGNED	BY
DRAWN	BY
CHECKED	BY
DATE	BY



FILE NAME =	DESIGNED - KEM	REVISIED -	STATE OF ILLINOIS DEPARTMENT OF TRANSPORTATION	DRAINAGE PLAN AND PROFILE IL RTE 56	F.A.P. RT. = 365	SECTION (57 & 58)WRS-2	COUNTY DUPAGE	TOTAL SHEETS 681	SHEET NO. 276		
USER NAME =	CHECKED - LSM	REVISIED -			SCALE: 1"=50'	SHEET NO. 11 OF 18 SHEETS	STA. 393+00.00 TO STA. 408+00.00	CONTRACT NO. 62419	ILLINOIS FED. AID PROJECT		
PLOT DATE =	DATE - 12/6/10	REVISIED -									