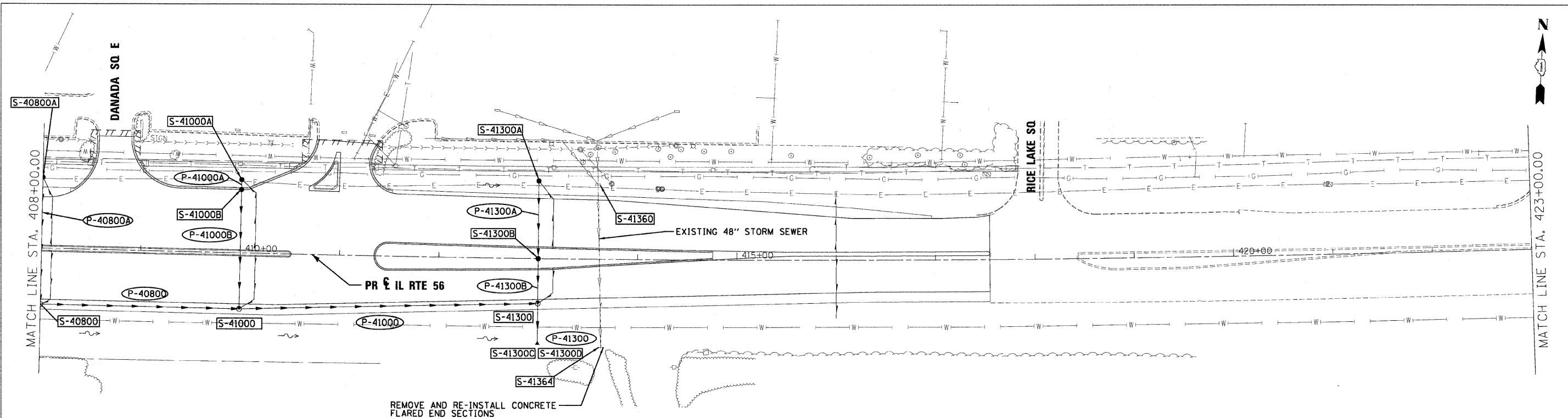


PLAN	DATE
DESIGNED	BY
CHECKED	BY
PLOTTED	DATE
NOTE BOOK	NO.
STRUCTURE	NO.
NO. OF SHEETS	
CADD FILE NAME	

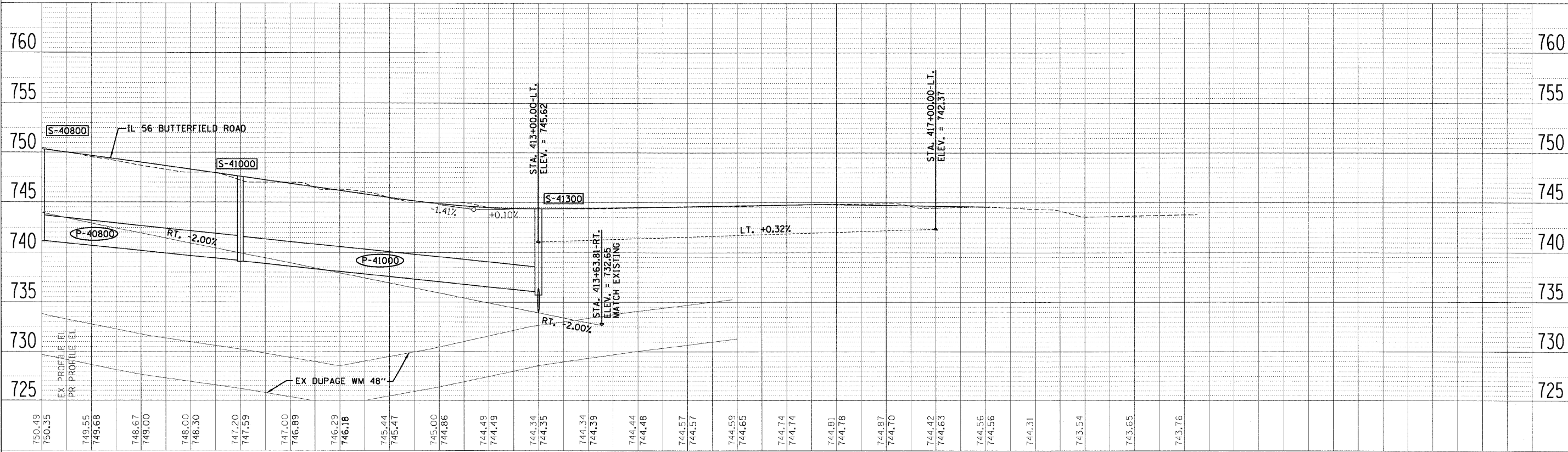
PROFILE	DATE
DESIGNED	BY
CHECKED	BY
PLOTTED	DATE
NOTE BOOK	NO.
STRUCTURE	NO.
NO. OF SHEETS	
CADD FILE NAME	



REMOVE AND RE-INSTALL CONCRETE FLARED END SECTIONS

LEGEND

- FLOODPLAIN BOUNDARY
- FLOODWAY BOUNDARY
- SHEET FLOW
- SWALE
- - - DITCH
- CHANNEL
- 6' X 4' RCB
- CULVERT SIZE (HxV) TYPE
- △ END SECTION
- ← DITCH HIGH POINT
- F - F - FURROW
- 4" PIPE UNDERDRAIN
- PROPOSED STORM SEWER
- PROPOSED CATCH BASIN
- PROPOSED MANHOLE
- △ PROPOSED END SECTION
- ~ PROPOSED DITCH
- ~ PROPOSED HEADWALL
- CATCH BASIN
-) HEADWALL
- U INLET
- MANHOLE
- A ADJUST



FILE NAME =	DESIGNED - KEM	REVISIED -	2im	STATE OF ILLINOIS DEPARTMENT OF TRANSPORTATION	DRAINAGE PLAN AND PROFILE IL RTE 56	F.A.P. RTE. 365	SECTION (57 & 58)WRS-2	COUNTY DUPAGE	TOTAL SHEETS 681	SHEET NO. 277			
USER NAME =	DRAWN - KEM	REVISIED -				SCALE: 1"=50'	SHEET NO. 12 OF 18 SHEETS	STA. 408+00.00 TO STA. 423+00.00	CONTRACT NO. 62419		ILLINOIS FED. AID PROJECT		
CHECKED - LSM	DATE - 12/6/10	REVISIED -											
DATE =													