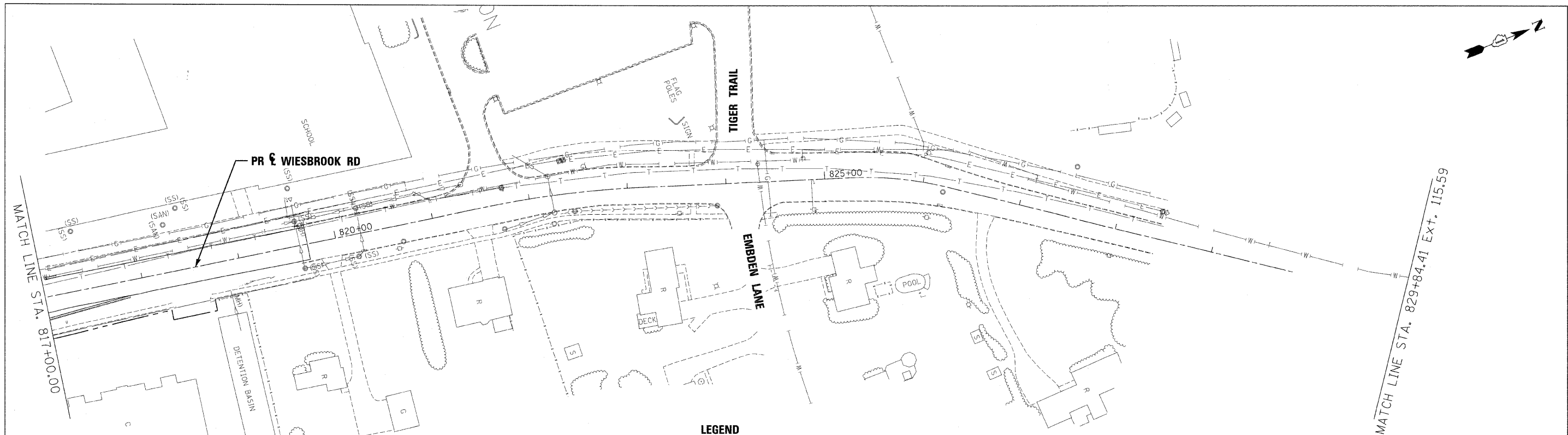


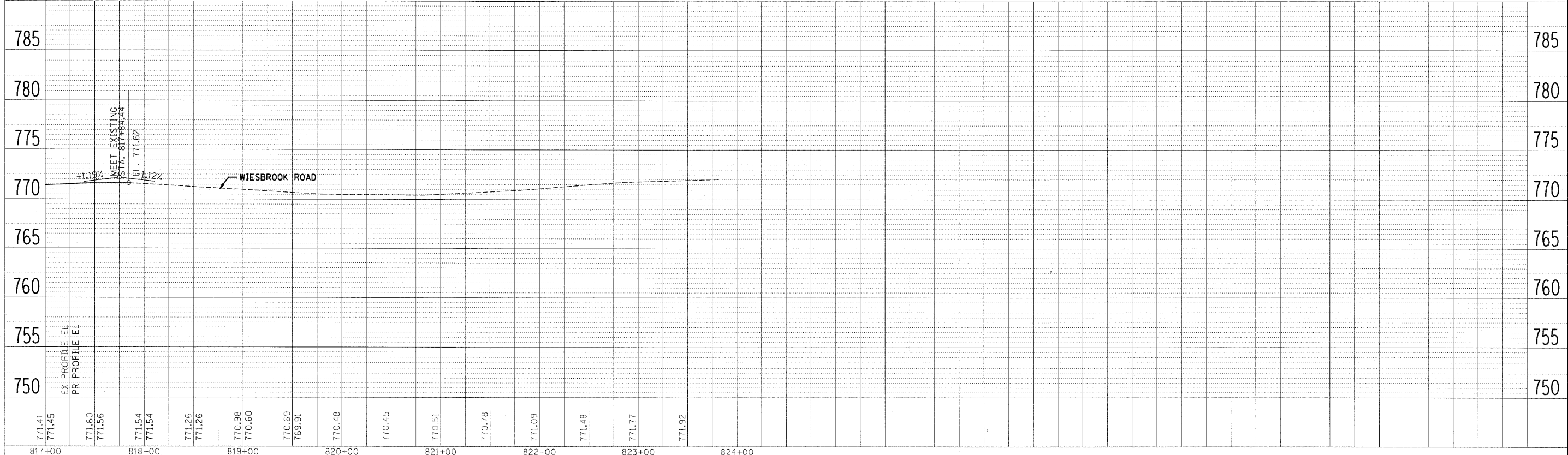
PLAN	DESIGNED	BY	DATE
	DRAWN		
	CHECKED		
	DATE		
	NO.		

PROFILE	DESIGNED	BY	DATE
	DRAWN		
	CHECKED		
	DATE		
	NO.		



**LEGEND**

- FLOODPLAIN BOUNDARY
- - - FLOODWAY BOUNDARY
- SHEET FLOW
- SWALE
- ~ DITCH
- CHANNEL
- 6' X 4' RCB
- △ END SECTION
- ↔ DITCH HIGH POINT
- F-F- FURROW
- 4" PIPE UNDERDRAIN
- PROPOSED STORM SEWER
- PROPOSED CATCH BASIN
- PROPOSED MANHOLE
- PROPOSED END SECTION
- PROPOSED DITCH
- PROPOSED HEADWALL
- CATCH BASIN
- HEADWALL
- INLET
- MANHOLE
- ADJUST



FILE NAME =	DESIGNED - KEM	REVISIED -	<b>2im</b> GROUP	<b>STATE OF ILLINOIS</b> <b>DEPARTMENT OF TRANSPORTATION</b>	<b>DRAINAGE PLAN AND PROFILE</b> <b>IL RTE 56</b>	F.A.P. RTE.	SECTION	COUNTY	TOTAL SHEETS	SHEET NO.
USER NAME =	DRAWN - KEM	REVISIED -				365	(57 & 58)WRS-2	DUPAGE	681	279
PLOT DATE =	CHECKED - LSM	REVISIED -				CONTRACT NO. 62419				
	DATE - 12/6/10	REVISIED -				ILLINOIS FED. AID PROJECT				

SCALE: 1"=50' SHEET NO. 14 OF 18 SHEETS STA. 817+00.00 TO STA. 829+84.41