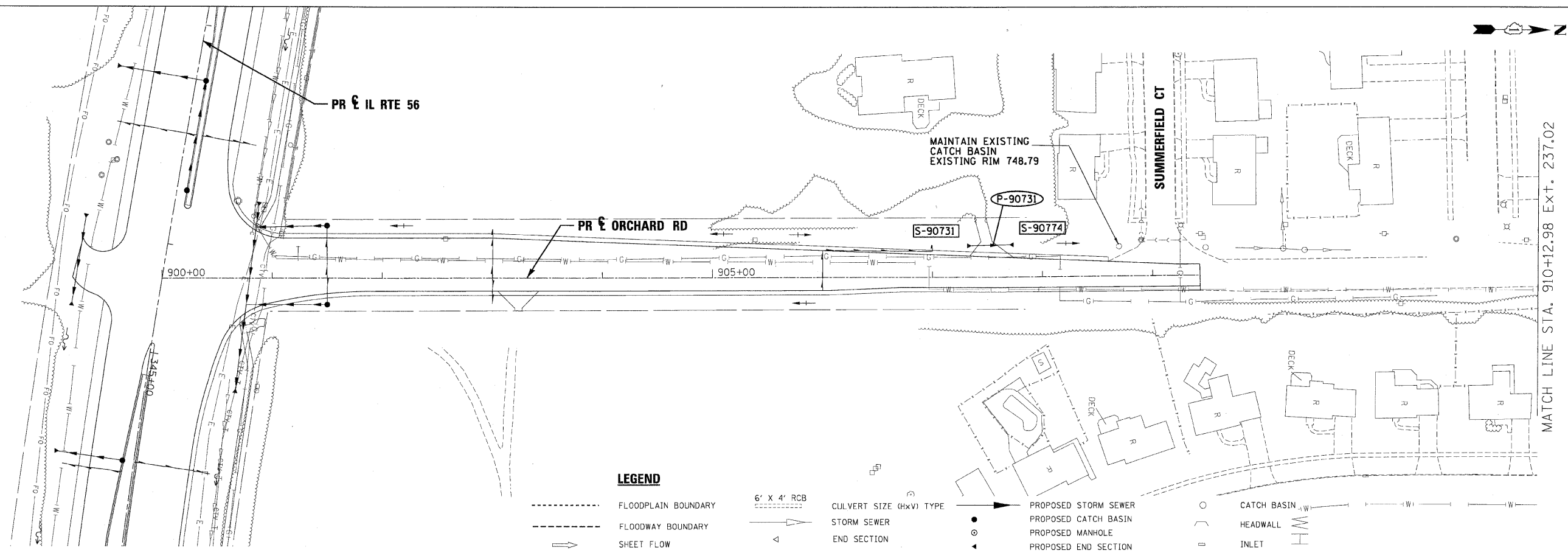


PLAN	DESIGNED	DATE
	BY	
	REVISIONS	
	PLOTTED	
	ALIGNED	
	CHECKED	
	NO. CAD FILE NAME	

PROFILE	DESIGNED	DATE
	BY	
	REVISIONS	
	PLOTTED	
	GRADES CHECKED	
	STRUCTURE NOTATIONS OK'D	
	NO.	

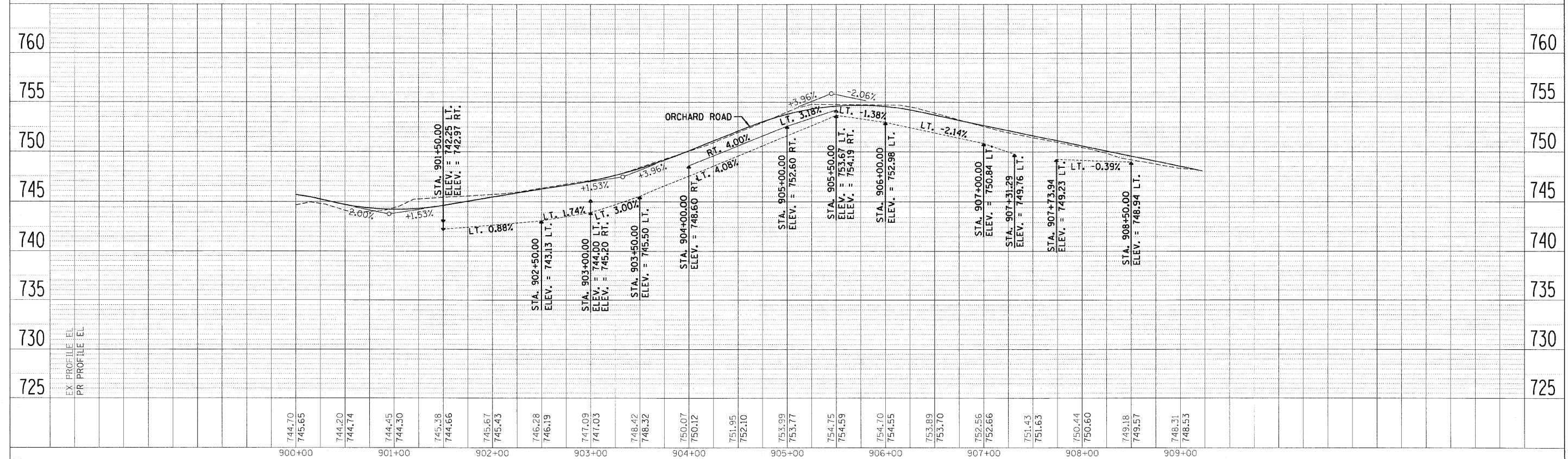
MATCH LINE STA. 900+00.00 EXT. -250.00



MATCH LINE STA. 910+12.98 EXT. 237.02

**LEGEND**

- FLOODPLAIN BOUNDARY
- FLOODWAY BOUNDARY
- SHEET FLOW
- SWALE
- DITCH
- CHANNEL
- 6' x 4' RCB
- CULVERT SIZE (HxV) TYPE
- STORM SEWER
- END SECTION
- DITCH HIGH POINT
- FURROW
- 4" PIPE UNDERDRAIN
- PROPOSED STORM SEWER
- PROPOSED CATCH BASIN
- PROPOSED MANHOLE
- PROPOSED END SECTION
- PROPOSED DITCH
- PROPOSED HEADWALL
- CATCH BASIN
- HEADWALL
- INLET
- MANHOLE
- ADJUST



FILE NAME =	DESIGNED - KEM	REVISED -	<b>2im</b>	<b>STATE OF ILLINOIS DEPARTMENT OF TRANSPORTATION</b>	<b>DRAINAGE PLAN AND PROFILE IL RTE 56</b>	F.A.P. RT. = 365	SECTION = (57 & 58)WRS-2	COUNTY =	TOTAL SHEETS = 681	SHEET NO. = 280			
USER NAME =	DRAWN - KEM	REVISED -				SCALE: 1"=50'	SHEET NO. 15 OF 18 SHEETS	STA. 900+00.00 TO STA. 910+12.98	CONTRACT NO. 62419		ILLINOIS FED. AID PROJECT		
CHECKED - LSM	DATE - 12/6/10	REVISED -											
PLOT DATE =													