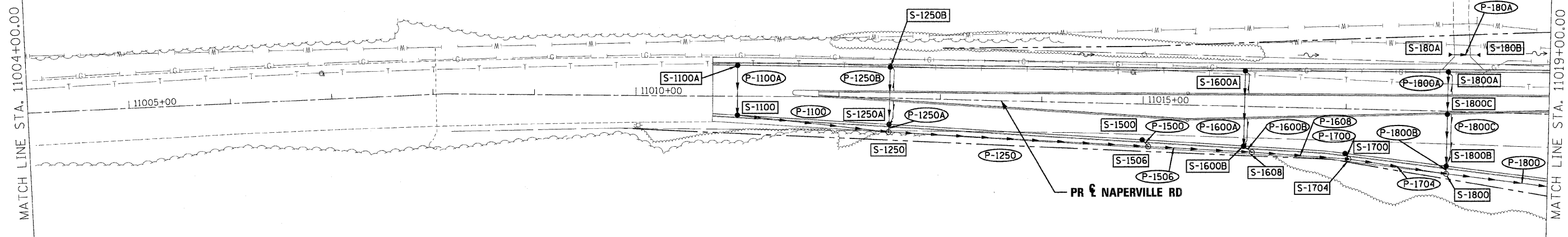




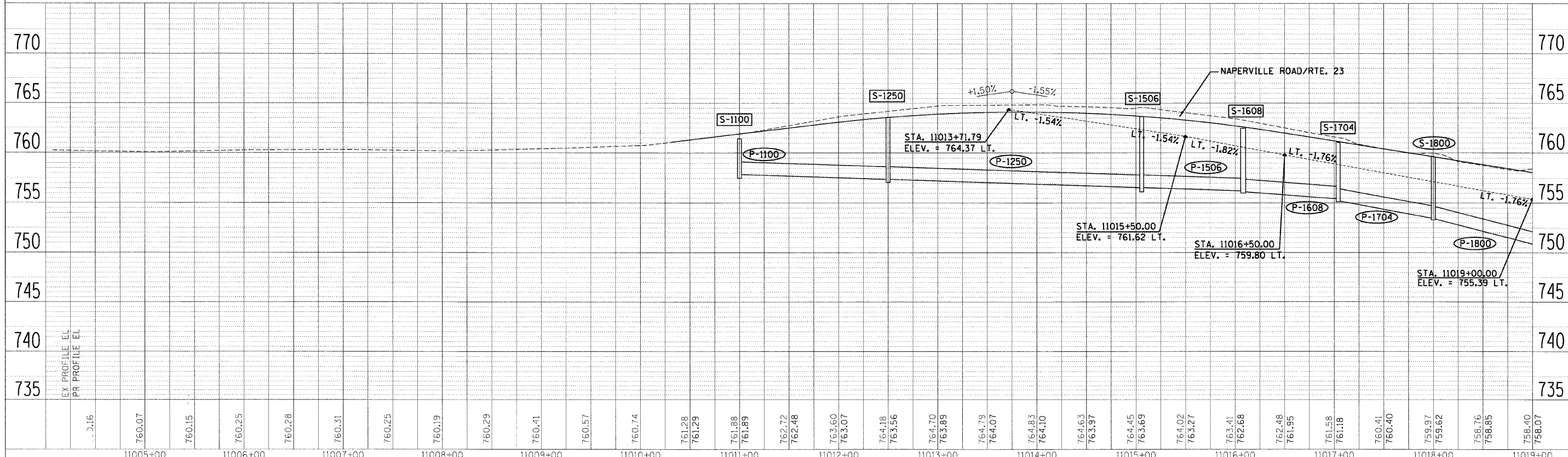
|      |           |      |
|------|-----------|------|
| PLAN | DESIGNED  | DATE |
| NO.  | BY        |      |
|      | REVISIONS |      |
|      | PLOTTED   |      |
|      | ALIGNED   |      |
|      | CHECKED   |      |
|      | DATE      |      |
|      | FILE NAME |      |



**LEGEND**

- FLOODPLAIN BOUNDARY
- FLOODWAY BOUNDARY
- SHEET FLOW
- SWALE
- ~ DITCH
- CHANNEL
- 6' X 4' RCB
- ▽ STORM SEWER
- △ END SECTION
- ↔ DITCH HIGH POINT
- F-F- FURROW
- 4" PIPE UNDERDRAIN
- PROPOSED STORM SEWER
- PROPOSED CATCH BASIN
- PROPOSED MANHOLE
- PROPOSED END SECTION
- PROPOSED DITCH
- PROPOSED HEADWALL
- CATCH BASIN
- HEADWALL
- INLET
- MANHOLE
- ADJUST

|         |           |      |
|---------|-----------|------|
| PROFILE | DESIGNED  | DATE |
| NO.     | BY        |      |
|         | REVISIONS |      |
|         | PLOTTED   |      |
|         | ALIGNED   |      |
|         | CHECKED   |      |
|         | DATE      |      |
|         | FILE NAME |      |



|             |                |           |  |   |  |                           |                                      |                           |               |                  |               |  |  |
|-------------|----------------|-----------|--|---|--|---------------------------|--------------------------------------|---------------------------|---------------|------------------|---------------|--|--|
| FILE NAME = | DESIGNED - KEM | REVISED - |  | <b>STATE OF ILLINOIS<br/>DEPARTMENT OF TRANSPORTATION</b> | <b>DRAINAGE PLAN AND PROFILE<br/>IL RTE 56</b> |                           | F.A.P. RTE. 365                      | SECTION 157 & 581WRS-2    | COUNTY DUPAGE | TOTAL SHEETS 681 | SHEET NO. 281 |  |  |
| USER NAME = | DRAWN - KEM    | REVISED - |  |   | SCALE: 1"=50'                                  | SHEET NO. 16 OF 18 SHEETS | STA. 11004+00.00 TO STA. 11019+00.00 | ILLINOIS FED. AID PROJECT |               |                  |               |  |  |
| PLOT DATE = | CHECKED - LSM  | REVISED - |  |   |  |                           |                                      |                           |               |                  |               |  |  |
|             | DATE - 12/6/10 | REVISED - |  |   |  |                           |                                      |                           |               |                  |               |  |  |