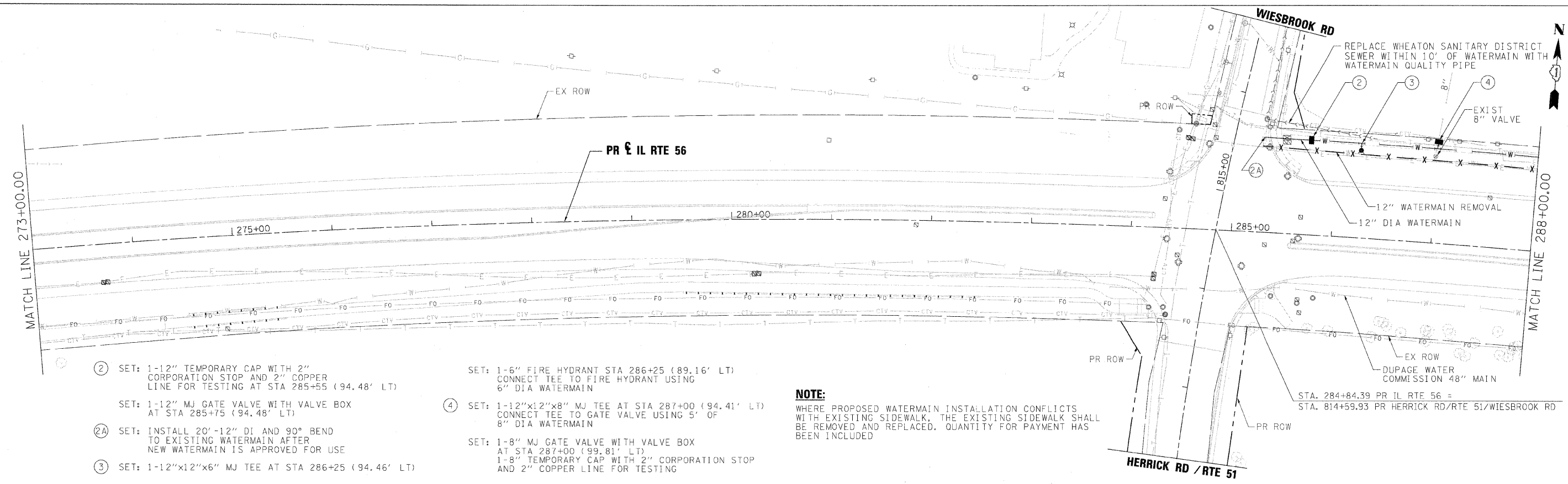


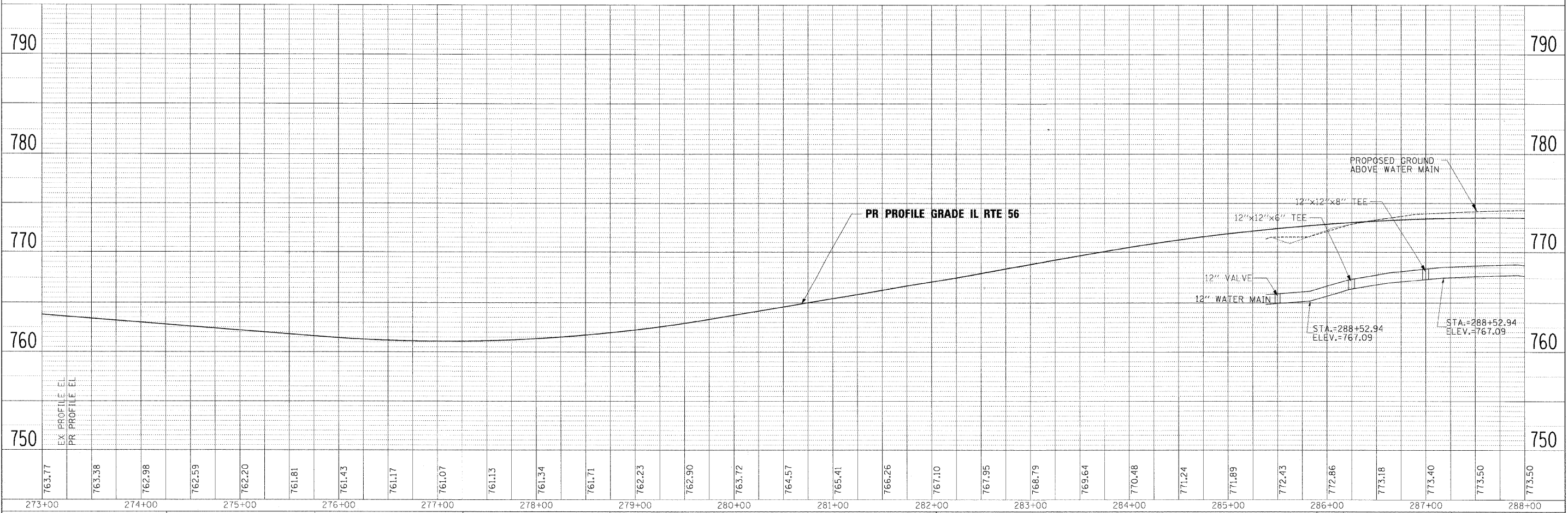
DATE	
BY	
REVISIONS	
PLANNED	
NOTED	
NO.	

DATE	
BY	
REVISIONS	
PROFILING	
NOTED	
NO.	



- ② SET: 1-12" TEMPORARY CAP WITH 2" CORPORATION STOP AND 2" COPPER LINE FOR TESTING AT STA 285+55 (94.48' LT)
- ③ SET: 1-6" FIRE HYDRANT STA 286+25 (89.16' LT) CONNECT TEE TO FIRE HYDRANT USING 6" DIA WATERMAIN
- ④ SET: 1-12"x12"x8" MJ TEE AT STA 287+00 (94.41' LT) CONNECT TEE TO GATE VALVE USING 5' OF 8" DIA WATERMAIN
- ②A SET: 1-12" MJ GATE VALVE WITH VALVE BOX AT STA 285+75 (94.48' LT)
- ②A SET: INSTALL 20'-12" DI AND 90° BEND TO EXISTING WATERMAIN AFTER NEW WATERMAIN IS APPROVED FOR USE
- ③ SET: 1-12"x12"x6" MJ TEE AT STA 286+25 (94.46' LT)
- ④ SET: 1-8" MJ GATE VALVE WITH VALVE BOX AT STA 287+00 (99.81' LT) 1-8" TEMPORARY CAP WITH 2" CORPORATION STOP AND 2" COPPER LINE FOR TESTING

**NOTE:**  
WHERE PROPOSED WATERMAIN INSTALLATION CONFLICTS WITH EXISTING SIDEWALK, THE EXISTING SIDEWALK SHALL BE REMOVED AND REPLACED. QUANTITY FOR PAYMENT HAS BEEN INCLUDED



FILE NAME =	DESIGNED - JMM	REVISED -		<b>STATE OF ILLINOIS</b> <b>DEPARTMENT OF TRANSPORTATION</b>		<b>WATERMAIN PLAN AND PROFILE</b> <b>IL RTE 56</b>		F.A.P. RTE.	SECTION	COUNTY	TOTAL SHEETS	SHEET NO.
...ND182419-shr-wm-plnprf03.dgn	DRAWN - TMB	REVISED -						365	(57 & 58)WRS-2	DUPAGE	681	287
USER NAME = tblank	CHECKED - RMT	REVISED -						CONTRACT NO. 62419				
DATE = 12/7/2010	DATE = 12/6/10	REVISED -						ILLINOIS FED. AID PROJECT				

SCALE: 1"=50' SHEET NO. 3 OF 11 SHEETS STA. 273+00 TO STA. 288+00