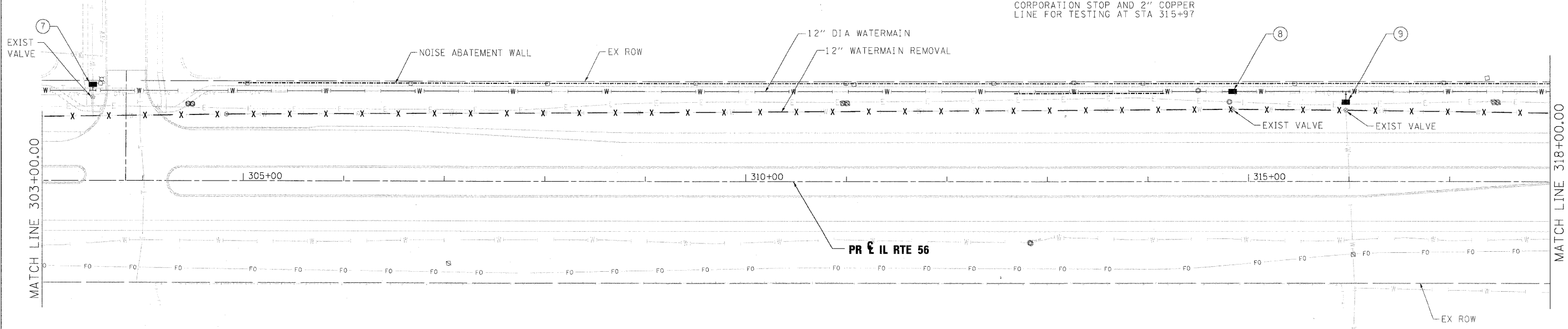




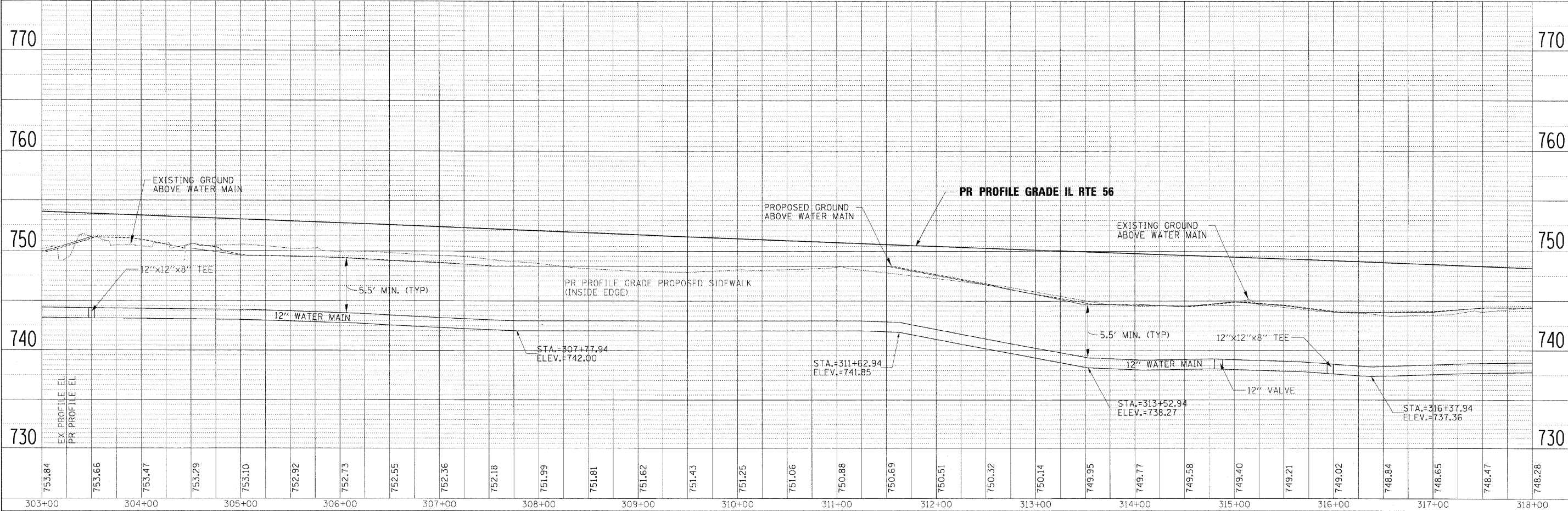
- ⑦ SET: 1-12"x12"x8" MJ TEE AT STA 303+50 (90.00' LT) CONNECT TEE TO GATE VALVE USING 5' OF 8" DIA WATERMAIN
- SET: 1-8" MJ GATE VALVE AT STA 303+50 (95.40' LT)
- SET: 1-8" TEMPORARY CAP WITH 2" CORPORATION STOP AND 2" COPPER LINE FOR TESTING AT STA 303+50
- ⑧ SET: 1-12" MJ GATE VALVE WITH VALVE BOX AT STA 314+84 (90.00' LT)
- ⑨ SET: 1-12"x12"x8" MJ TEE AT STA 315+97 (90.00' LT) CONNECT TEE TO GATE VALVE USING 5' OF 8" DIA WATERMAIN
- SET: 1-8" MJ GATE VALVE WITH VALVE BOX AT STA 315+97 (84.60' LT)
- SET: 1-8" TEMPORARY CAP WITH 2" CORPORATION STOP AND 2" COPPER LINE FOR TESTING AT STA 315+97

LEGENDS DR



DATE	
BY	
DESIGNED	
DRAWN	
CHECKED	
DATE	
FILE NAME	
NO.	

DATE	
BY	
DESIGNED	
DRAWN	
CHECKED	
DATE	
FILE NAME	
NO.	



FILE NAME =	DESIGNED - JMM	REVISED -	benesch	STATE OF ILLINOIS DEPARTMENT OF TRANSPORTATION	WATERMAIN PLAN AND PROFILE IL RTE 56	F.A.P. RTE.	SECTION	COUNTY	TOTAL SHEETS	SHEET NO.
... \D162419 sht-wi-plnprf05.dgn	DRAWN - TMB	REVISED -				365	(57 & 58)WRS-2	DUPAGE	681	289
USER NAME = tblank	CHECKED - RMT	REVISED -				CONTRACT NO. 62419				
PLOT DATE = 12/7/2010	DATE - 12/6/10	REVISED -				ILLINOIS FED. AID PROJECT				

SCALE: 1"=50' SHEET NO. 5 OF 11 SHEETS STA. 303+00 TO STA. 318+00