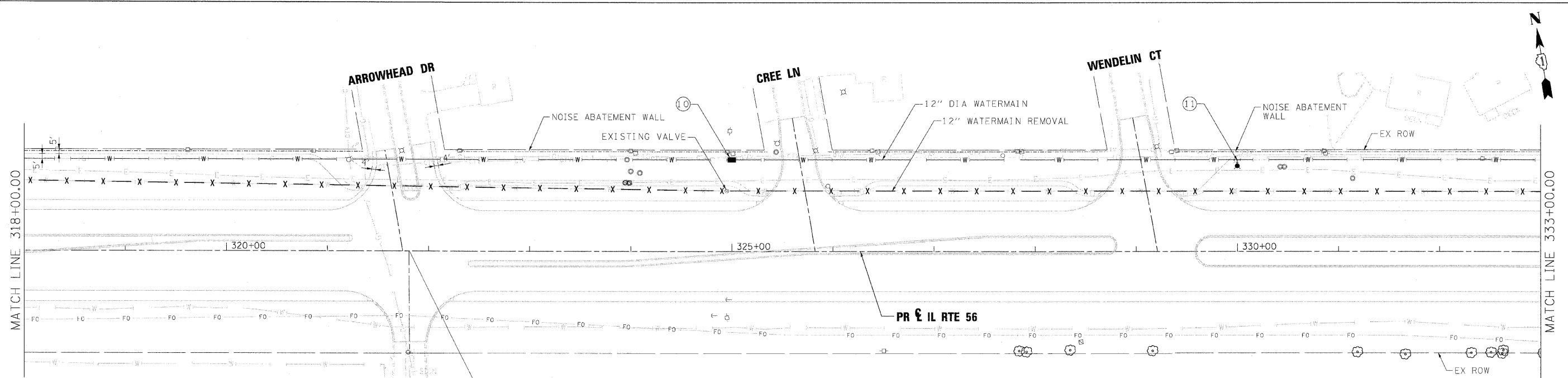


PLAN	DATE
SUBMITTED	BY
PLOTTED	
ALIGNMENT CHECKED	
STRUCTURE NOTATION CHECKED	
NOTE BOOK NO.	
CADD FILE NAME	

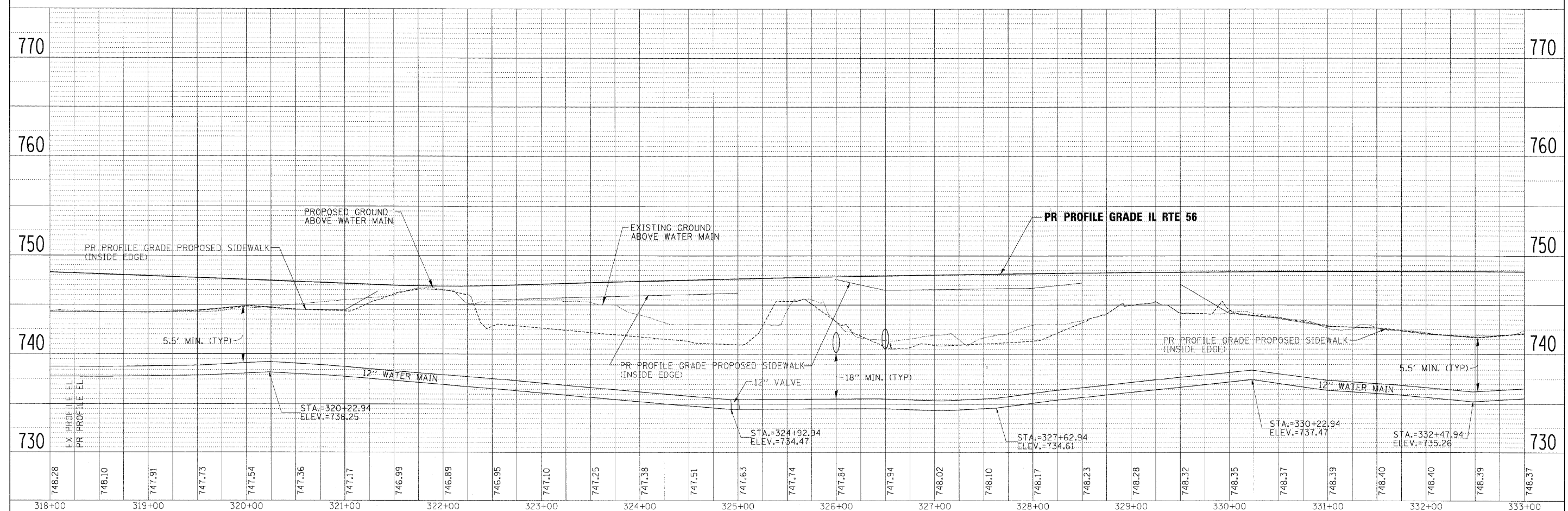
PROFILE	DATE
SUBMITTED	BY
PLOTTED	
GRADES CHECKED	
STRUCTURE NOTATION CHECKED	
NOTE BOOK NO.	
CADD FILE NAME	



ARROWHEAD GOLF COURSE ENTRANCE

STA. 321+80.52 PR IL RTE 56 =
ARROWHEAD DR

- ⑩ SET: 1-12" MJ GATE VALVE WITH VALVE BOX AT STA 325+00 (90.00' LT)
- ⑪ SET: 12"X12"X6" MJ TEE AT STA 330+00 (90.00' LT) CONNECT TEE TO FIRE HYDRANT USING 6" DIA WATERMAIN
- SET: 1-6" FIRE HYDRANT AT STA 330+00 (83.80' LT)



FILE NAME =	DESIGNED - JMM	REVISED -		STATE OF ILLINOIS DEPARTMENT OF TRANSPORTATION			WATERMAIN PLAN AND PROFILE IL RTE 56			F.A.P. RTE. 365	SECTION (57 & 58)WRS-2	COUNTY	TOTAL SHEETS 681	SHEET NO. 290
...\\0162419-ah-t-wm.plrpr f06.dgn	DRAWN - TMB	REVISED -		SCALE: 1"=50'			SHEET NO. 6 OF 11 SHEETS	STA. 318+00 TO STA. 333+00	DUPAGE	CONTRACT NO. 62419	ILLINOIS FED. AID PROJECT			
USER NAME = sbloak	CHECKED - RMT	REVISED -												
PLOT DATE = 12/7/2018	DATE - 12/6/10	REVISED -												