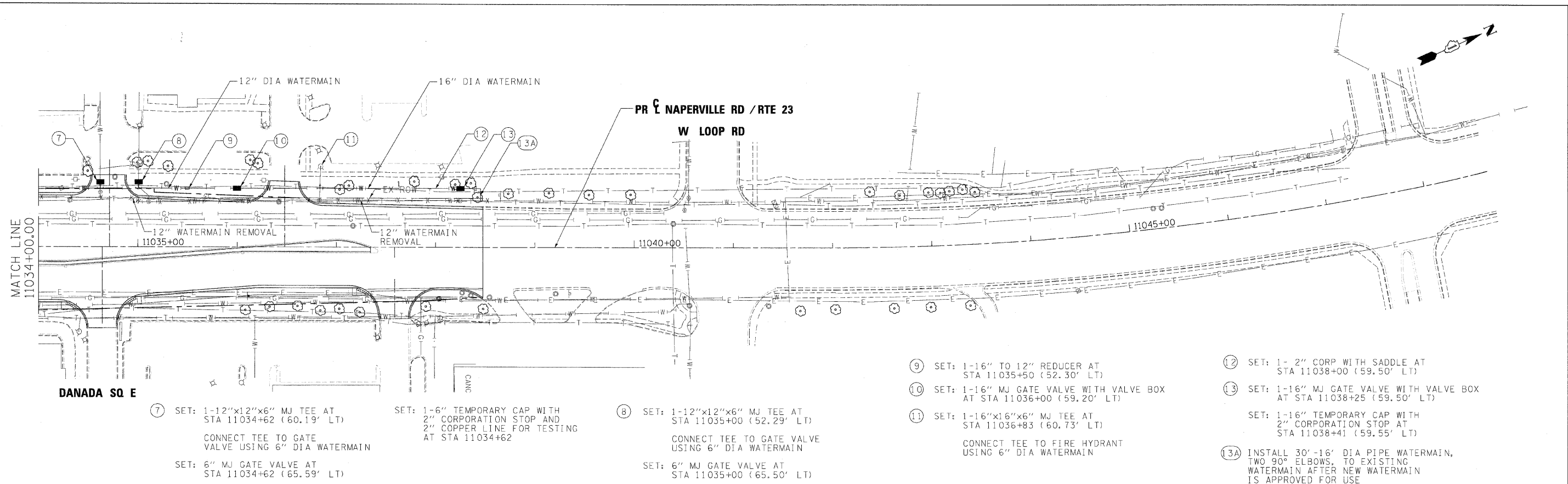


DATE	
BY	
REVISIONS	
NO.	
DESCRIPTION	
DATE	
BY	
NO.	
DESCRIPTION	
DATE	
BY	
NO.	
DESCRIPTION	
DATE	
BY	
NO.	
DESCRIPTION	



⑦ SET: 1-12"x12"x6" MJ TEE AT STA 11034+62 (60.19' LT)
 CONNECT TEE TO GATE VALVE USING 6" DIA WATERMAIN
 SET: 6" MJ GATE VALVE AT STA 11034+62 (65.59' LT)

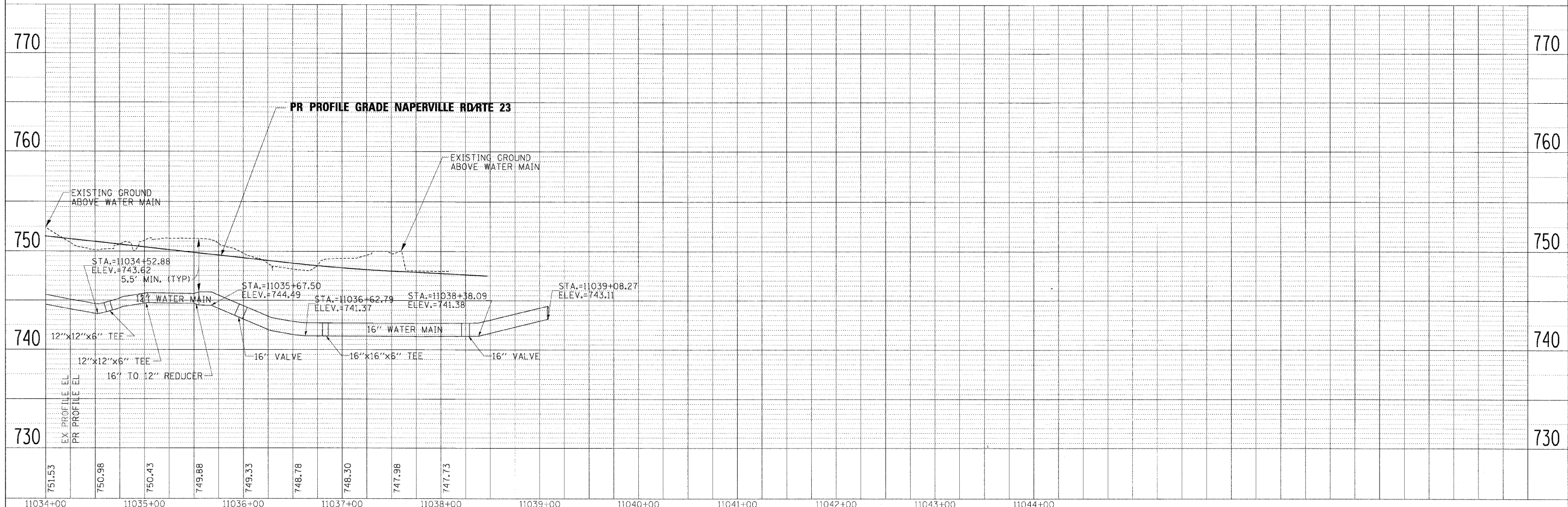
SET: 1-6" TEMPORARY CAP WITH 2" CORPORATION STOP AND 2" COPPER LINE FOR TESTING AT STA 11034+62

⑧ SET: 1-12"x12"x6" MJ TEE AT STA 11035+00 (52.29' LT)
 CONNECT TEE TO GATE VALVE USING 6" DIA WATERMAIN
 SET: 6" MJ GATE VALVE AT STA 11035+00 (65.50' LT)

⑨ SET: 1-16" TO 12" REDUCER AT STA 11035+50 (52.30' LT)
 ⑩ SET: 1-16" MJ GATE VALVE WITH VALVE BOX AT STA 11036+00 (59.20' LT)
 ⑪ SET: 1-16"x16"x6" MJ TEE AT STA 11036+83 (60.73' LT)
 CONNECT TEE TO FIRE HYDRANT USING 6" DIA WATERMAIN

⑫ SET: 1- 2" CORP WITH SADDLE AT STA 11038+00 (59.50' LT)
 ⑬ SET: 1-16" MJ GATE VALVE WITH VALVE BOX AT STA 11038+25 (59.50' LT)
 SET: 1-16" TEMPORARY CAP WITH 2" CORPORATION STOP AT STA 11038+41 (59.55' LT)
 ⑬A) INSTALL 30'-16' DIA PIPE WATERMAIN, TWO 90° ELBOWS, TO EXISTING WATERMAIN AFTER NEW WATERMAIN IS APPROVED FOR USE

DATE	
BY	
REVISIONS	
NO.	
DESCRIPTION	
DATE	
BY	
NO.	
DESCRIPTION	
DATE	
BY	
NO.	
DESCRIPTION	



FILE NAME =	DESIGNED - JMM	REVISED -	benesch	STATE OF ILLINOIS DEPARTMENT OF TRANSPORTATION	WATERMAIN PLAN AND PROFILE NAPERVILLE RD	F.A.P. RTE.	SECTION	COUNTY	TOTAL SHEETS	SHEET NO.
...\\D162419-sht-wm-plnprf19.dgn	DRAWN - TMB	REVISED -				365	(57 & 58)WRS-2	DUPAGE	681	293
USER NAME = sbblank	CHECKED - RMT	REVISED -				CONTRACT NO. 62419				
DATE = 12/7/2018	DATE = 12/6/10	REVISED -				ILLINOIS FED. AID PROJECT				

SCALE: 1"=50' SHEET NO. 9 OF 11 SHEETS STA. 1034+00 TO STA. POE