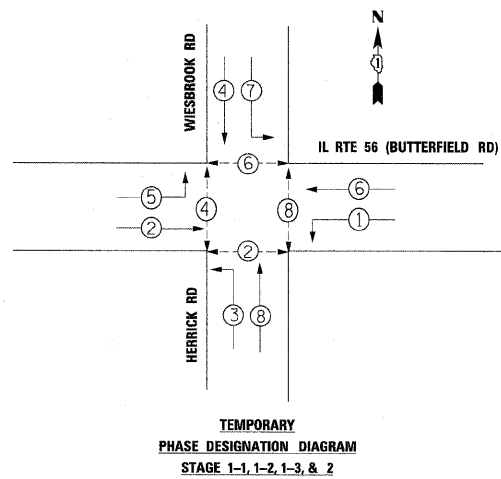
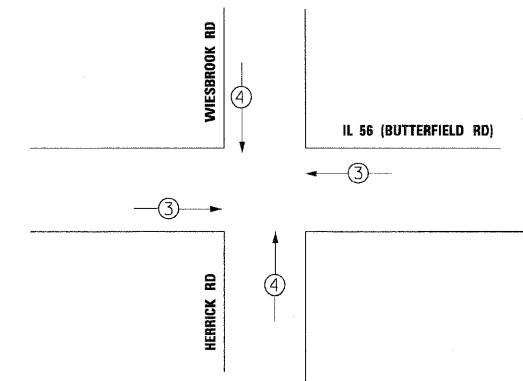


**TEMPORARY CONTROLLER SEQUENCE**

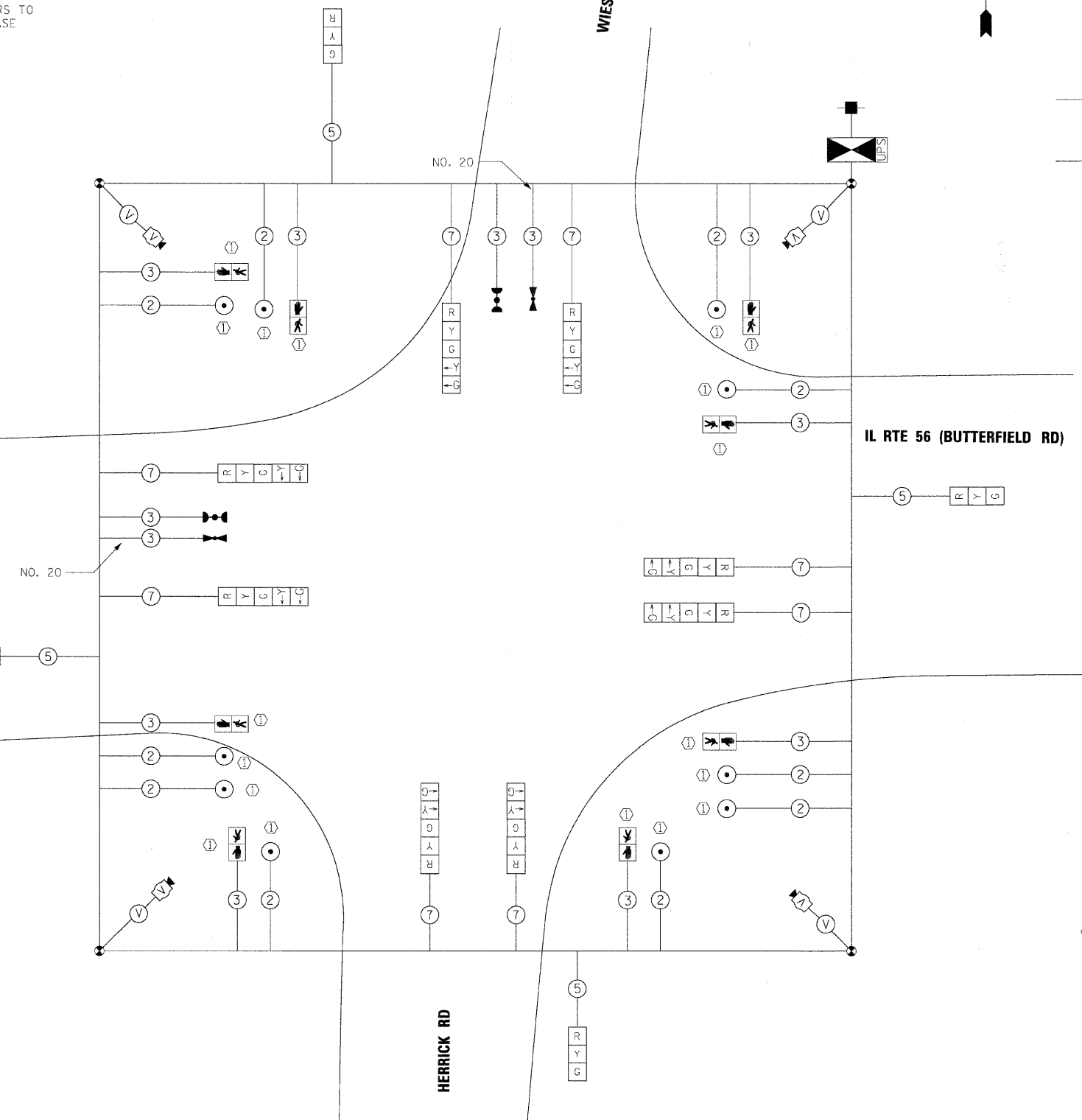


- LEGEND**
- ⊙ DUAL ENTRY PHASE
  - ⊙ OL OVERLAP
  - ⊙ PEDESTRIAN PHASE
  - NUMBER REFERS TO ASSOCIATED PHASE

**TEMPORARY EMERGENCY VEHICLE PREEMPTION SEQUENCE**



TEMPORARY EMERGENCY VEHICLE PREEMPTORS		
EMERGENCY VEHICLE PREEMPTORS	3	4
MOVEMENT	← →	↑ ↓



**TEMPORARY CABLE PLAN**

**CONSTRUCTION NOTES:**

- ① PEDESTRIAN SIGNALS AND PUSH BUTTONS SHALL REMAIN IN OPERATION AT ALL TIMES WHILE THE TEMPORARY TRAFFIC SIGNALS ARE IN USE. ANY REQUIRED ADJUSTMENT, RELOCATION OR TEMPORARY CABLING REQUIRED TO MAINTAIN PEDESTRIAN SIGNAL OPERATIONS DURING CONSTRUCTION IS INCIDENTAL TO "TEMPORARY TRAFFIC SIGNAL INSTALLATION".

**NOTE:**

THE TEMPORARY TRAFFIC SIGNAL CONTROLLER EQUIPMENT FOR THIS PROJECT SHALL BE "ECONOLITE" TO MATCH THE EXISTING ADJACENT SYSTEM.

I.D.O.T TRAFFIC SIGNAL INSTALLATION ELECTRICAL SERVICE REQUIREMENTS					TOTAL WATTAGE
TYPE	NO. LAMPS	WATTAGE		%OPERATION	
SIGNAL (RED)	12	-	17	0.50	102
(YELLOW)	12	-	25	0.25	75
(GREEN)	12	-	15	0.25	45
ARROW	16	-	12	0.10	19.2
PED. SIGNAL	8	-	25	1.00	200
CONTROLLER	1	-	100	1.00	100
ILLUM. SIGN	-	-	25	0.05	-
VIDEO SYSTEM	1	150	-	1.00	150
FLASHER				0.50	
ENERGY COSTS TO:					TOTAL = 691.2

ILLINOIS DEPARTMENT OF TRANSPORTATION  
201 W. CENTER COURT  
SCHAMBURG, ILLINOIS 60196  
ENERGY SUPPLY CONTACT: JOSEPH STACHO  
PHONE: 630-424-5704  
COMPANY: COMED

FILE NAME =	DESIGNED - GHT	REVISED -
...\\d162419-sh\ts\temp\table1.dgn	DRAWN - BDW	REVISED -
USER NAME = tblenk	CHECKED - MPM	REVISED -
PLOT DATE = 12/7/2012	DATE - 12/6/10	REVISED -

**benesch**

**STATE OF ILLINOIS  
DEPARTMENT OF TRANSPORTATION**

**TEMPORARY TRAFFIC SIGNAL  
PHASE DESIGNATION DIAGRAM AND EVP SEQUENCE  
IL RTE 56 AND HERRICK RD /WIESBROOK RD**

F.A.P. RTE.	SECTION	COUNTY	TOTAL SHEETS	SHEET NO.
365	(57 & 58)WRS-2	DUPAGE	681	347
CONTRACT NO. 62419			ILLINOIS FED. AID PROJECT	

SCALE: SHEET NO. 4 OF 27 SHEETS STA. TO STA.