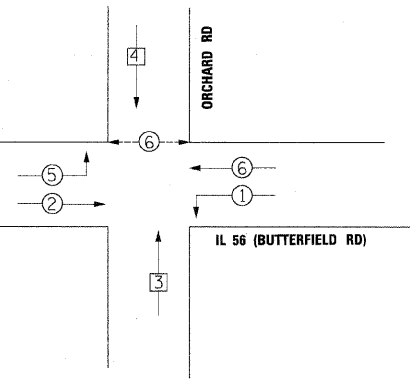
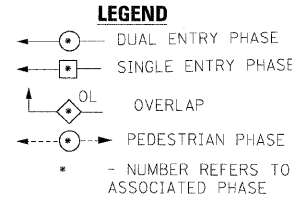
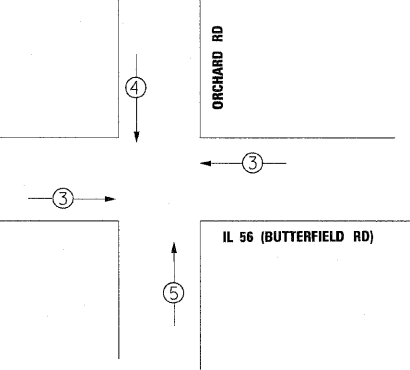


CONTROLLER SEQUENCE



EMERGENCY VEHICLE PREEMPTION SEQUENCE



PROPOSED INTERCONNECT TO HERRICK RD.

TRACER CABLE

PROPOSED INTERSECTION AND (SAMPLING) DETECTORS

NO. 20

IL 56 (BUTTERFIELD RD)

CABLE PLAN



NOTE:
THE TRAFFIC SIGNAL CONTROLLER EQUIPMENT FOR THIS PROJECT SHALL BE "ECONOLITE" TO MATCH THE EXISTING ADJACENT SYSTEM.

THE END OF THE TRACER CABLE SHALL BE CONTINUOUS AND EXTEND INTO THE CONTROLLER CABINET.

* 100% OF EVP COSTS WHEATON FIRE DEPARTMENT

NOTE:
ALL DETECTOR LOOPS AT THIS INTERSECTION ARE PERFORMED (EMBEDDED IN PCC PAVEMENT)

NUMBER OF NO. 6 GROUND (GREEN) CABLES AS PER PLAN

PROPOSED INTERCONNECT TO CROMWELL DR.

PROPOSED INTERSECTION AND (SAMPLING) SYSTEM DETECTORS

PROPOSED EMERGENCY VEHICLE PREEMPTORS

EMERGENCY VEHICLE PREEMPTORS	3	4	5
MOVEMENT	←	↓	↑

I.D.O.T. TRAFFIC SIGNAL INSTALLATION ELECTRICAL SERVICE REQUIREMENTS

TYPE	NO. LAMPS	INCAND.	LED	%OPERATION	TOTAL WATTAGE
SIGNAL (RED)	17	-	17	0.50	144.5
(YELLOW)	17	-	25	0.25	106.25
(GREEN)	25	-	15	0.25	93.75
ARROW	8	-	12	0.10	9.6
PED. SIGNAL	2	-	25	1.00	50
CONTROLLER	1	-	100	1.00	100
FLASHER				0.50	

ENERGY COSTS TO: TOTAL = 504.1

ILLINOIS DEPARTMENT OF TRANSPORTATION
 201 W. CENTER COURT
 SCHAMBURG, ILLINOIS 60196
 ENERGY SUPPLY CONTACT: JOSEPH STACHO
 PHONE: 630-424-5704
 COMPANY: COMED

SUMMARY OF QUANTITIES

DESCRIPTION	UNIT	TOTAL QUANTITY
DETECTABLE WARNINGS	SQ FT	22
SIGN PANEL - TYPE 1	SQ FT	16.5
SIGN PANEL - TYPE 2	SQ FT	15.0
CONDUIT IN TRENCH, 2" DIA., GALVANIZED STEEL	FOOT	610
CONDUIT IN TRENCH, 2 1/2" DIA., GALVANIZED STEEL	FOOT	10
CONDUIT IN TRENCH, 3" DIA., GALVANIZED STEEL	FOOT	14
CONDUIT IN TRENCH, 4" DIA., GALVANIZED STEEL	FOOT	20
CONDUIT PUSHED, 2" DIA., GALVANIZED STEEL	FOOT	235
CONDUIT PUSHED, 4" DIA., GALVANIZED STEEL	FOOT	438
HEAVY DUTY HANDHOLE	EACH	8
DOUBLE HANDHOLE	EACH	1
TRENCH AND BACKFILL FOR ELECTRICAL WORK	FOOT	741
FULL-ACTUATED CONTROLLER AND TYPE IV CABINET, SPECIAL	EACH	1
TRANSCIVER - FIBER OPTIC	EACH	1
ELECTRIC CABLE IN CONDUIT, SIGNAL NO. 14 2C	FOOT	187
ELECTRIC CABLE IN CONDUIT, SIGNAL NO. 14 3C	FOOT	200
ELECTRIC CABLE IN CONDUIT, SIGNAL NO. 14 5C	FOOT	1,067
ELECTRIC CABLE IN CONDUIT, SIGNAL NO. 14 7C	FOOT	2,385
ELECTRIC CABLE IN CONDUIT, LEAD-IN, NO. 14, 1 PR	FOOT	2,740
ELECTRIC CABLE IN CONDUIT, SERVICE, NO. 6 2C	FOOT	80
TRAFFIC SIGNAL POST, GALVANIZED STEEL, 15 FT.	EACH	1
STEEL MAST ARM ASSEMBLY AND POLE, 30 FT.	EACH	1
STEEL MAST ARM ASSEMBLY AND POLE, 42 FT.	EACH	1
STEEL MAST ARM ASSEMBLY AND POLE, 50 FT.	EACH	1
STEEL MAST ARM ASSEMBLY AND POLE WITH DUAL MAST ARMS, 36 FT. AND 54 FT.	EACH	1
CONCRETE FOUNDATION, TYPE A	FOOT	4
CONCRETE FOUNDATION, TYPE C	FOOT	4
CONCRETE FOUNDATION, TYPE E 36-INCH DIAMETER	FOOT	55
SIGNAL HEAD LED 1-FACE 3-SECTION MAST ARM MOUNTED	EACH	4
SIGNAL HEAD LED 1-FACE 4-SECTION, BRACKET MOUNTED	EACH	2
SIGNAL HEAD LED 1-FACE 4-SECTION, MAST ARM MOUNTED	EACH	4
SIGNAL HEAD LED 1-FACE 5-SECTION MAST ARM MOUNTED	EACH	3
SIGNAL HEAD LED 2-FACE 1-3-SECTION, 1-4 SECTION BRACKET MOUNTED	EACH	1
SIGNAL HEAD LED 2-FACE 1-4-SECTION, 1-5 SECTION BRACKET MOUNTED	EACH	1
PEDESTRIAN SIGNAL HEAD, LED, 1-FACE, BRACKET MOUNTED WITH COUNTDOWN TIMER	EACH	2
TRAFFIC SIGNAL BACKPLATE, LOUVERED, ALUMINUM	EACH	7
INDUCTIVE LOOP DETECTOR	EACH	11
DETECTOR LOOP, TYPE I	FOOT	1,026
LIGHT DETECTOR	EACH	3
LIGHT DETECTOR AMPLIFIER	EACH	1
PEDESTRIAN PUSH-BUTTON	EACH	2
TEMPORARY TRAFFIC SIGNAL INSTALLATION	EACH	1
REMOVE EXISTING TRAFFIC SIGNAL EQUIPMENT	EACH	1
REMOVE EXISTING HANDHOLE	EACH	4
REMOVE EXISTING CONCRETE FOUNDATION	EACH	9
TEMPORARY TRAFFIC SIGNAL TIMING	EACH	1
SERVICE INSTALLATION - POLE MOUNTED	EACH	1
UNINTERRUPTIBLE POWER SUPPLY	EACH	1
ELECTRIC CABLE IN CONDUIT, GROUNDING, NO. 6 1C	FOOT	519
ELECTRIC CABLE IN CONDUIT NO. 20 3C, TWISTED SHIELDED	FOOT	1,268

FILE NAME =	DESIGNED - GHT	REVISED -
...No162419-sh-t-cable@ph2.dgn	DRAWN - BDW	REVISED -
USER NAME = tblank	CHECKED - MPM	REVISED -
PLOT DATE = 12/7/2010	DATE - 12/6/10	REVISED -

benesch

STATE OF ILLINOIS
DEPARTMENT OF TRANSPORTATION

**SCHEDULE OF QUANTITIES
PHASE DESIGNATION DIAGRAM AND EVP SEQUENCE
IL RTE 56 AND ORCHARD RD**

SCALE: 1"=20' SHEET NO. 10 OF 27 SHEETS STA. TO STA.

F.A.P. RTE.	SECTION	COUNTY	TOTAL SHEETS	SHEET NO.
365	(57 & 58)WRS-2	DUPAGE	681	353
CONTRACT NO. 62419			ILLINOIS FED. AID PROJECT	