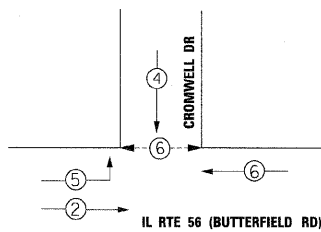
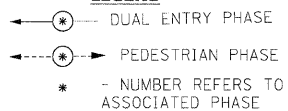


CONTROLLER SEQUENCE

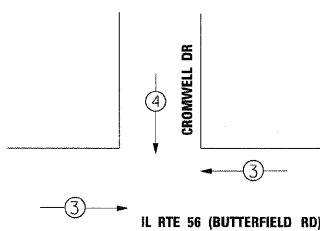


PHASE DESIGNATION DIAGRAM

LEGEND



EMERGENCY VEHICLE PREEMPTION SEQUENCE



PROPOSED EMERGENCY VEHICLE PREEMPTORS

EMERGENCY VEHICLE PREEMPTORS	3	4
MOVEMENT	←	↓

I.D.O.T. TRAFFIC SIGNAL INSTALLATION ELECTRICAL SERVICE REQUIREMENTS

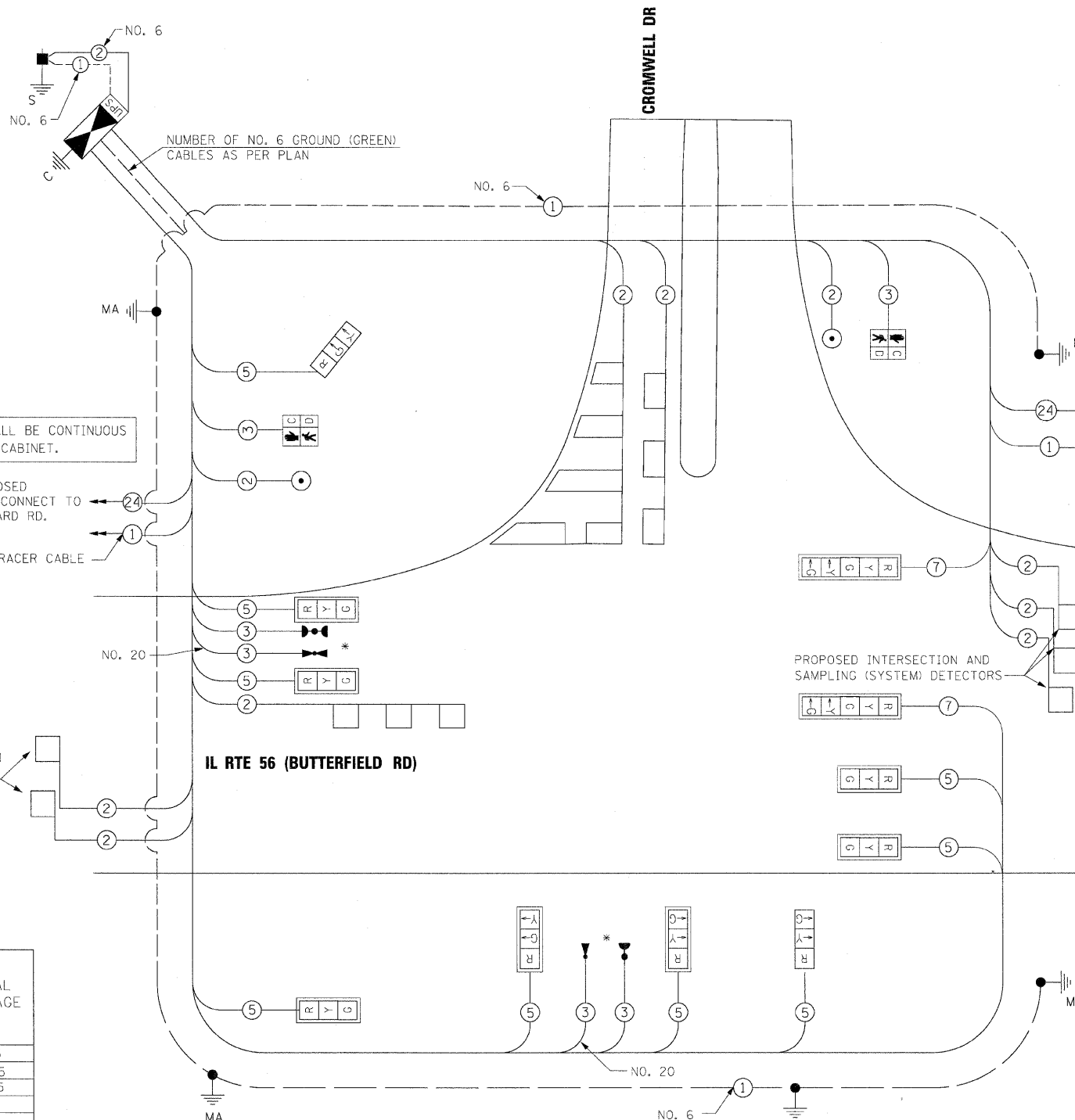
TYPE	NO. LAMPS	WATTAGE		%OPERATION	TOTAL WATTAGE
		INCAND.	LED		
SIGNAL (RED)	11	-	17	0.50	93.5
(YELLOW)	11	-	25	0.25	68.75
(GREEN)	11	-	15	0.25	41.25
ARROW	4	-	12	0.10	4.8
PED. SIGNAL	2	-	25	1.00	50
CONTROLLER	1	-	100	1.00	100
FLASHER				0.50	

ENERGY COSTS TO: TOTAL = 358.3

ILLINOIS DEPARTMENT OF TRANSPORTATION

201 W. CENTER COURT
SCHAMBURG, ILLINOIS 60196

ENERGY SUPPLY CONTACT: JOSEPH STACHO
PHONE: 630-424-5704
COMPANY: COMED



CABLE PLAN

NOTE:
THE TRAFFIC SIGNAL CONTROLLER EQUIPMENT FOR THIS PROJECT SHALL BE "ECONOLITE" TO MATCH THE EXISTING ADJACENT SYSTEM.

THE END OF THE TRACER CABLE SHALL BE CONTINUOUS AND EXTEND INTO THE CONTROLLER CABINET.

NOTE:
ALL DETECTOR LOOPS AT THIS INTERSECTION ARE PREFORMED (EMBEDDED IN PCC PAVEMENT)

* 100% OF EVP COSTS TO WHEATON FIRE DEPARTMENT

SUMMARY OF QUANTITIES

DESCRIPTION	UNIT	TOTAL QUANTITY
DETECTABLE WARNINGS	SQ.FT	40
SIGN PANEL - TYPE 1	SQ.FT	16.5
SIGN PANEL - TYPE 2	SQ.FT	15.0
CONDUIT IN TRENCH, 2" DIA., GALVANIZED STEEL	FOOT	551
CONDUIT IN TRENCH, 2 1/2" DIA., GALVANIZED STEEL	FOOT	94
CONDUIT IN TRENCH, 3" DIA., GALVANIZED STEEL	FOOT	36
CONDUIT IN TRENCH, 4" DIA., GALVANIZED STEEL	FOOT	157
CONDUIT PUSHED, 2" DIA., GALVANIZED STEEL	FOOT	123
CONDUIT PUSHED, 4" DIA., GALVANIZED STEEL	FOOT	260
HANDHOLE	EACH	1
HEAVY DUTY HANDHOLE	EACH	4
DOUBLE HANDHOLE	EACH	1
TRENCH AND BACKFILL FOR ELECTRICAL WORK	FOOT	911
FULL-ACTUATED CONTROLLER AND TYPE IV CABINET, SPECIAL	EACH	1
TRANSCEIVER - FIBER OPTIC	EACH	1
ELECTRIC CABLE IN CONDUIT, SIGNAL NO. 14 2C	FOOT	229
ELECTRIC CABLE IN CONDUIT, SIGNAL NO. 14 3C	FOOT	565
ELECTRIC CABLE IN CONDUIT, SIGNAL NO. 14 5C	FOOT	1,958
ELECTRIC CABLE IN CONDUIT, SIGNAL NO. 14 7C	FOOT	571
ELECTRIC CABLE IN CONDUIT, LEAD-IN, NO. 14. 1 PR	FOOT	2,485
ELECTRIC CABLE IN CONDUIT, SERVICE, NO.6 2C	FOOT	65
TRAFFIC SIGNAL POST, GALVANIZED STEEL, 14 FT.	EACH	1
STEEL MAST ARM ASSEMBLY AND POLE, 24 FT.	EACH	1
STEEL MAST ARM ASSEMBLY AND POLE, 38 FT.	EACH	1
STEEL MAST ARM ASSEMBLY AND POLE, 42 FT.	EACH	1
STEEL MAST ARM ASSEMBLY AND POLE WITH DUAL MAST ARMS, 34 FT. AND 16 FT.	EACH	1
CONCRETE FOUNDATION, TYPE A	FOOT	4
CONCRETE FOUNDATION, TYPE C	FOOT	4
CONCRETE FOUNDATION, TYPE E 30-INCH DIAMETER	FOOT	10
CONCRETE FOUNDATION, TYPE E 36-INCH DIAMETER	FOOT	36
SIGNAL HEAD LED 1-FACE 3-SECTION MAST ARM MOUNTED	EACH	7
SIGNAL HEAD LED 1-FACE 3-SECTION BRACKET MOUNTED	EACH	2
SIGNAL HEAD LED 1-FACE 5-SECTION MAST ARM MOUNTED	EACH	2
PEDESTRIAN SIGNAL HEAD, LED, 1-FACE, BRACKET MOUNTED WITH COUNTDOWN TIMER	EACH	2
TRAFFIC SIGNAL BACKPLATE, LOUVERED, ALUMINUM	EACH	9
INDUCTIVE LOOP DETECTOR	EACH	8
DETECTOR LOOP, TYPE I	FOOT	699
* LIGHT DETECTOR	EACH	2
* LIGHT DETECTOR AMPLIFIER	EACH	1
PEDESTRIAN PUSH-BUTTON	EACH	2
TEMPORARY TRAFFIC SIGNAL INSTALLATION	EACH	1
REMOVE EXISTING TRAFFIC SIGNAL EQUIPMENT	EACH	1
REMOVE EXISTING HANDHOLE	EACH	3
REMOVE EXISTING CONCRETE FOUNDATION	EACH	8
TEMPORARY TRAFFIC SIGNAL TIMING	EACH	1
SERVICE INSTALLATION - POLE MOUNTED	EACH	1
UNINTERRUPTIBLE POWER SUPPLY	EACH	1
ELECTRIC CABLE IN CONDUIT, GROUNDING, NO.6 1C	FOOT	796
* ELECTRIC CABLE IN CONDUIT NO. 20 3C, TWISTED SHIELDED	FOOT	336