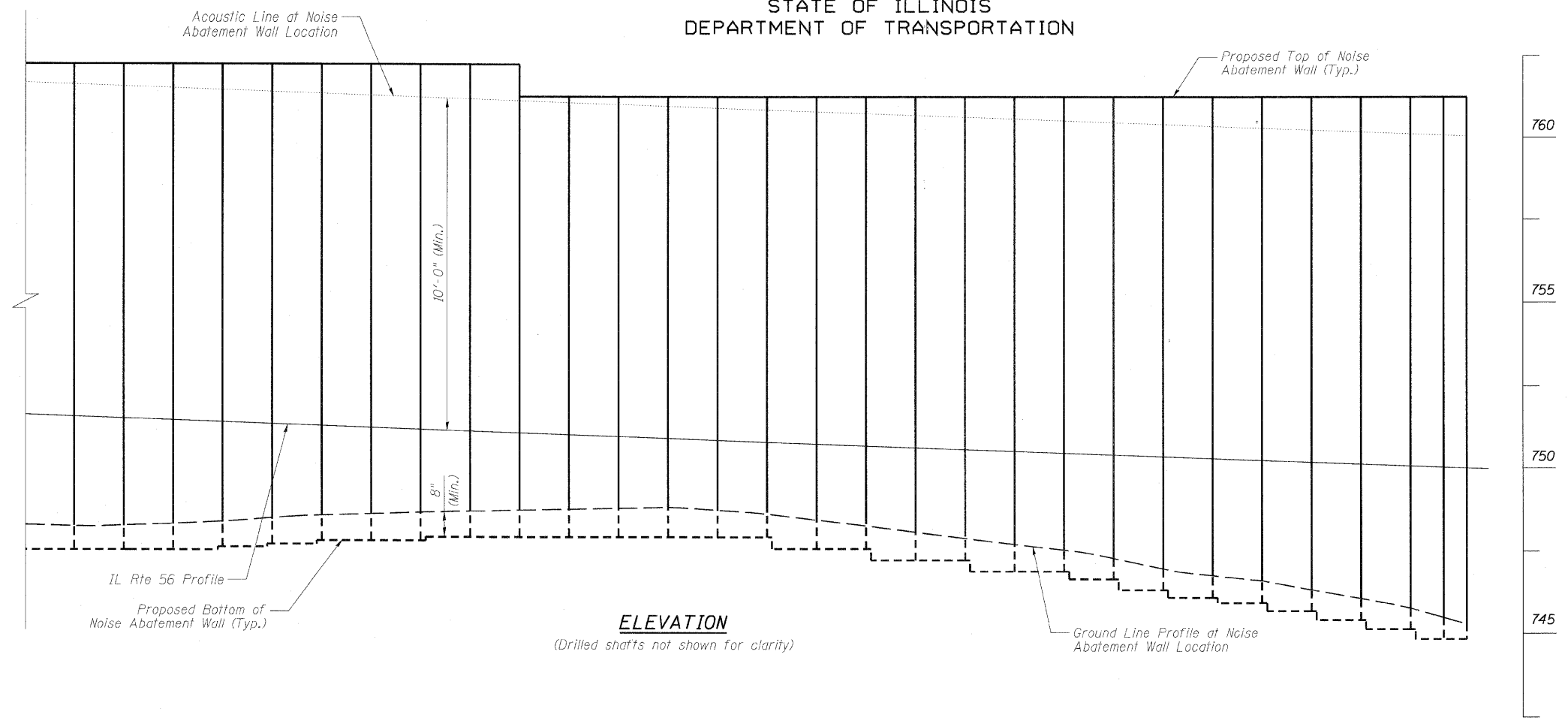
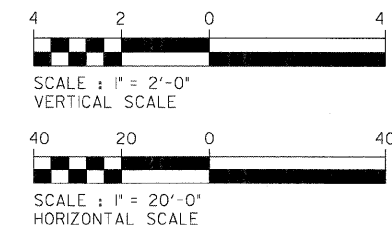
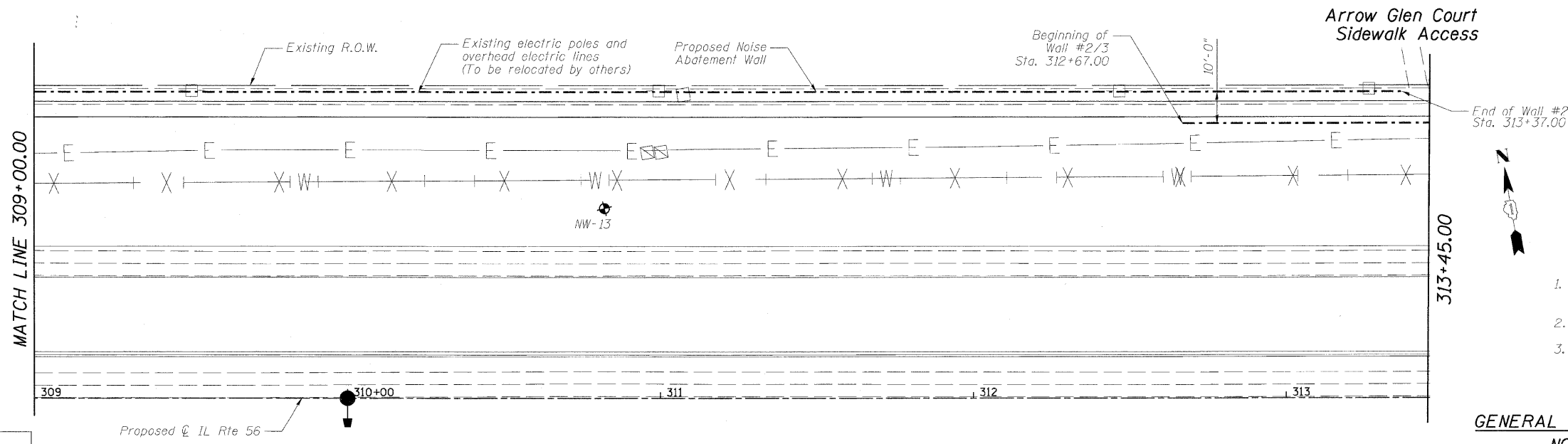


STATE OF ILLINOIS  
DEPARTMENT OF TRANSPORTATION



**ELEVATION**  
(Drilled shafts not shown for clarity)



**PLAN**

**NOTES:**

1. Elevation for Wall 2/3 not shown for clarity, see sheet N20 for elevation.
2. End of Wall 2 shall not be stepped.
3. Walls 2 and 3 shall be centered around existing access sidewalk. Adjust wall ends as required.

**GENERAL PLAN AND ELEVATION 4 OF 17  
NOISE ABATEMENT WALL**

DESIGNED	- RJT
CHECKED	- MRB
DRAWN	- MB
CHECKED	- MRB

**benesch**

alfred benesch & company  
Engineers • Surveyors • Planners  
205 North Michigan Avenue, Suite 2400  
Chicago, Illinois 60601  
312-565-0450 Job No. 3733

SHEET NO. N4 N30 SHEETS	F.A.P. RTE.	SECTION	COUNTY	TOTAL SHEETS	SHEET NO.
	365	(57 & 58)WRS-2	DUPAGE	681	403
			CONTRACT NO. 62419		
ILLINOIS FED. AID PROJECT					

x:\3700s\3733\engineering\_documents\phase.1\noise\_abatement.wall\final\162419-new.gps04.dgn 11:57:18 AM 12/3/2010