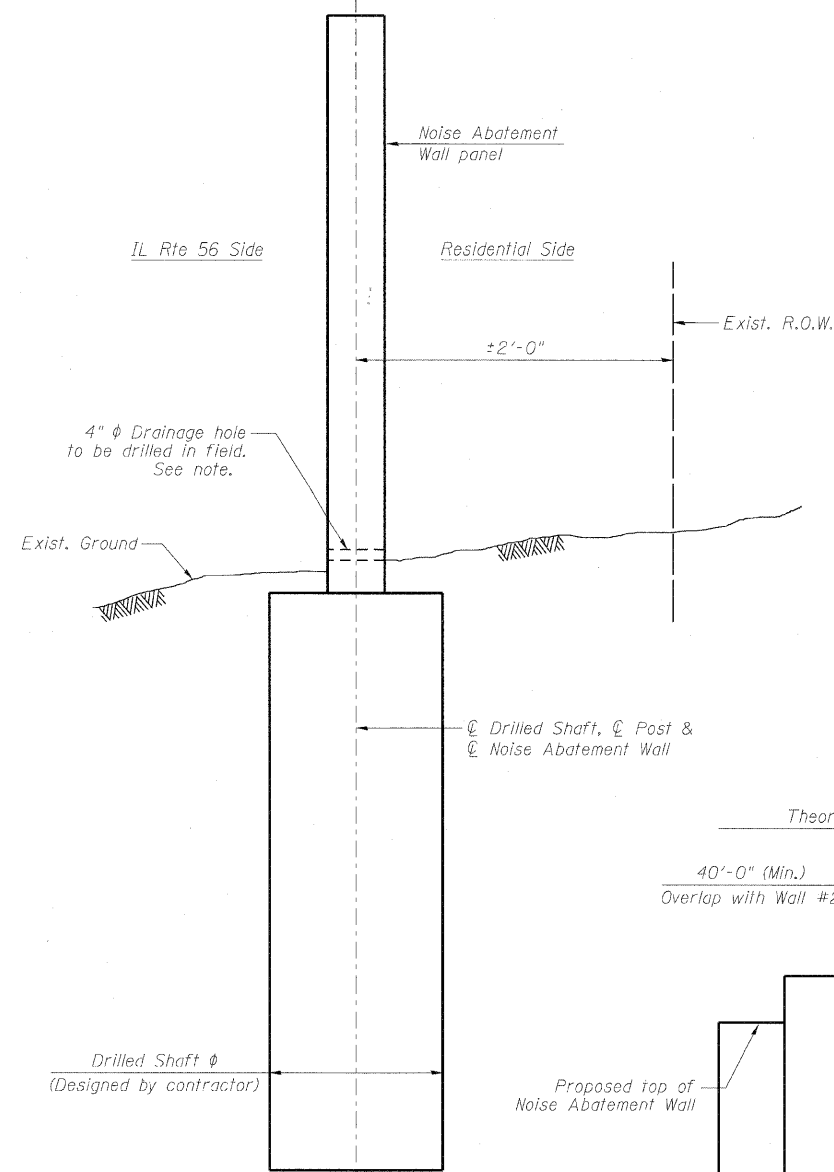
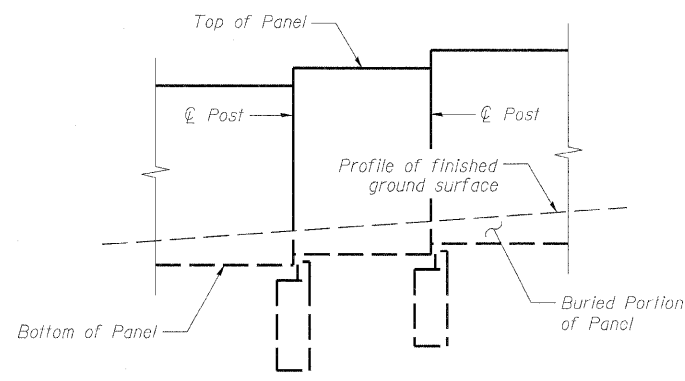


STATE OF ILLINOIS  
DEPARTMENT OF TRANSPORTATION

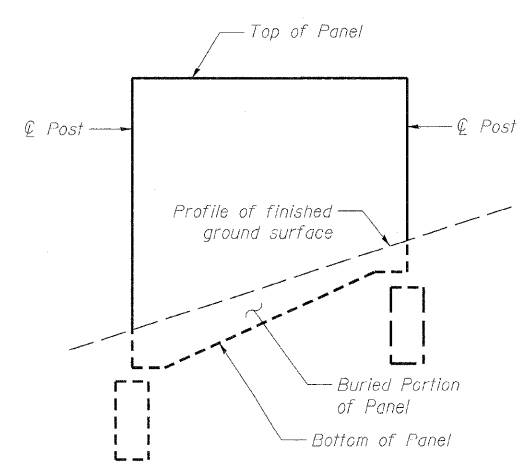


**TYPICAL CROSS SECTION**

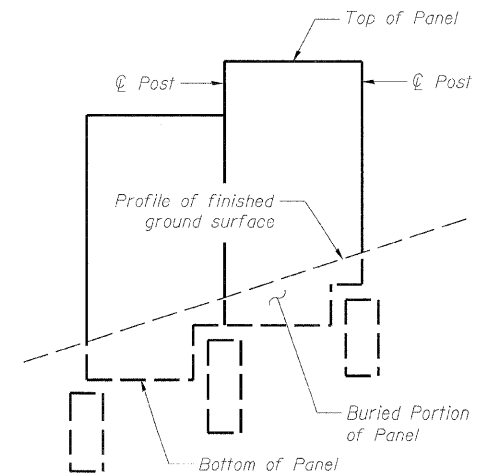


**METHOD OF MEASUREMENT OF WALL AREA  
FOR GROUND MOUNTED WALL**

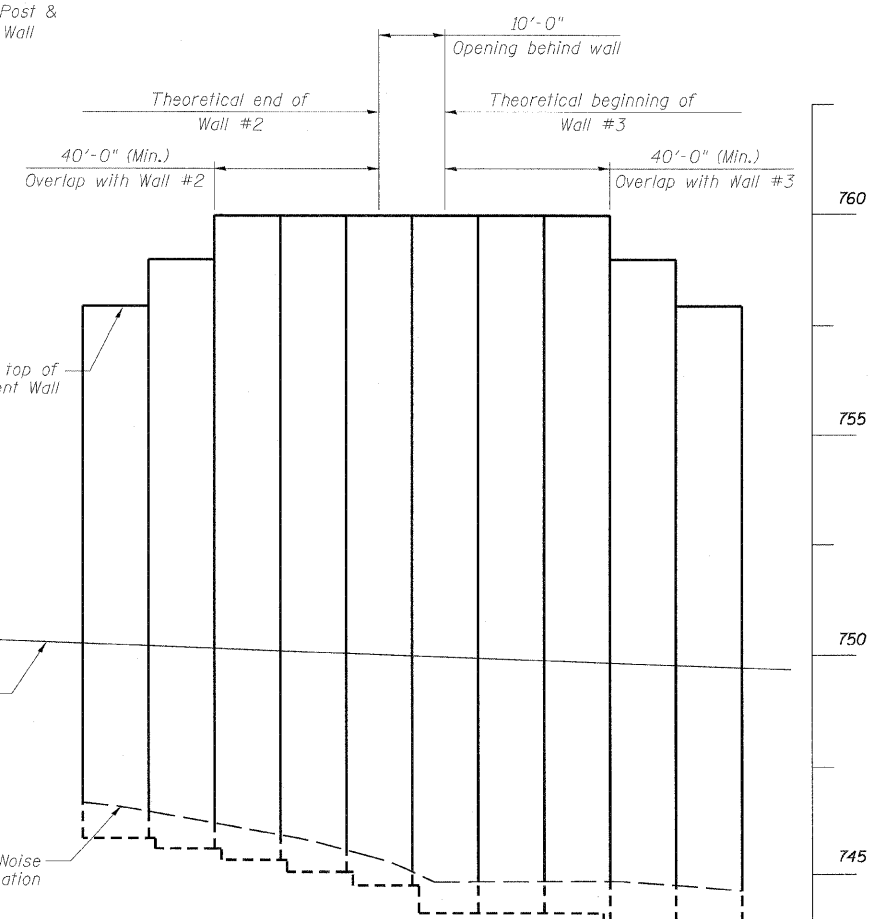
The Method of Measurement of quantity of Noise Abatement Wall is based on the cumulative area of Panels in Elevation View bounded by the C Posts, Top of Panel & Bottom of Panel. Alternates 1 and 2 apply to the contract options. See Special Provisions.



**ALTERNATE DETAIL 1**

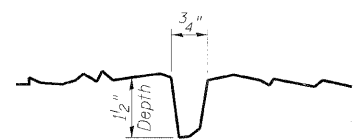


**ALTERNATE DETAIL 2**

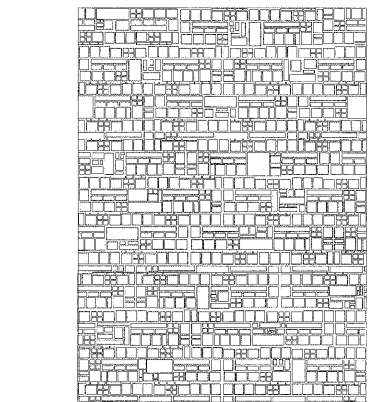


**NOISE ABATEMENT WALL #2/3 ELEVATION**

(Overlapping Walls #2 and #3, see sheets N4 and N5)



**ASHLAR STONE RUSTICATION DETAIL**



**ASHLAR STONE RUSTICATION  
ARCHITECTURAL TREATMENT**

**NOTES:**

1. Type, size and spacing of posts, noise wall panels, drilled shaft size and embedment length, reinforcement details, lifting bars and wall limits including top and bottom of wall shall be determined by the noise wall supplier during construction.
2. 4" φ drainage holes shall be field drilled through wall panels as required to facilitate surface drainage with a maximum of one hole per panel. Location to be determined by the engineer. Cost included with Noise Abatement Wall, Ground Mounted.

**NOISE ABATEMENT WALL DETAILS  
NOISE ABATEMENT WALL**

DESIGNED	RJT
CHECKED	MRB
DRAWN	MB
CHECKED	MRB

**benesch**

alfred benesch & company  
Engineers • Surveyors • Planners  
205 North Michigan Avenue, Suite 2400  
Chicago, Illinois 60601  
312-555-0450 Job No. 3733

SHEET NO. N20 N30 SHEETS	F.A.P. RTE. 365	SECTION (57 & 58)WRS-2	COUNTY DUPAGE	TOTAL SHEETS 681	SHEET NO. 419
	CONTRACT NO. 62419			ILLINOIS FED. AID PROJECT	