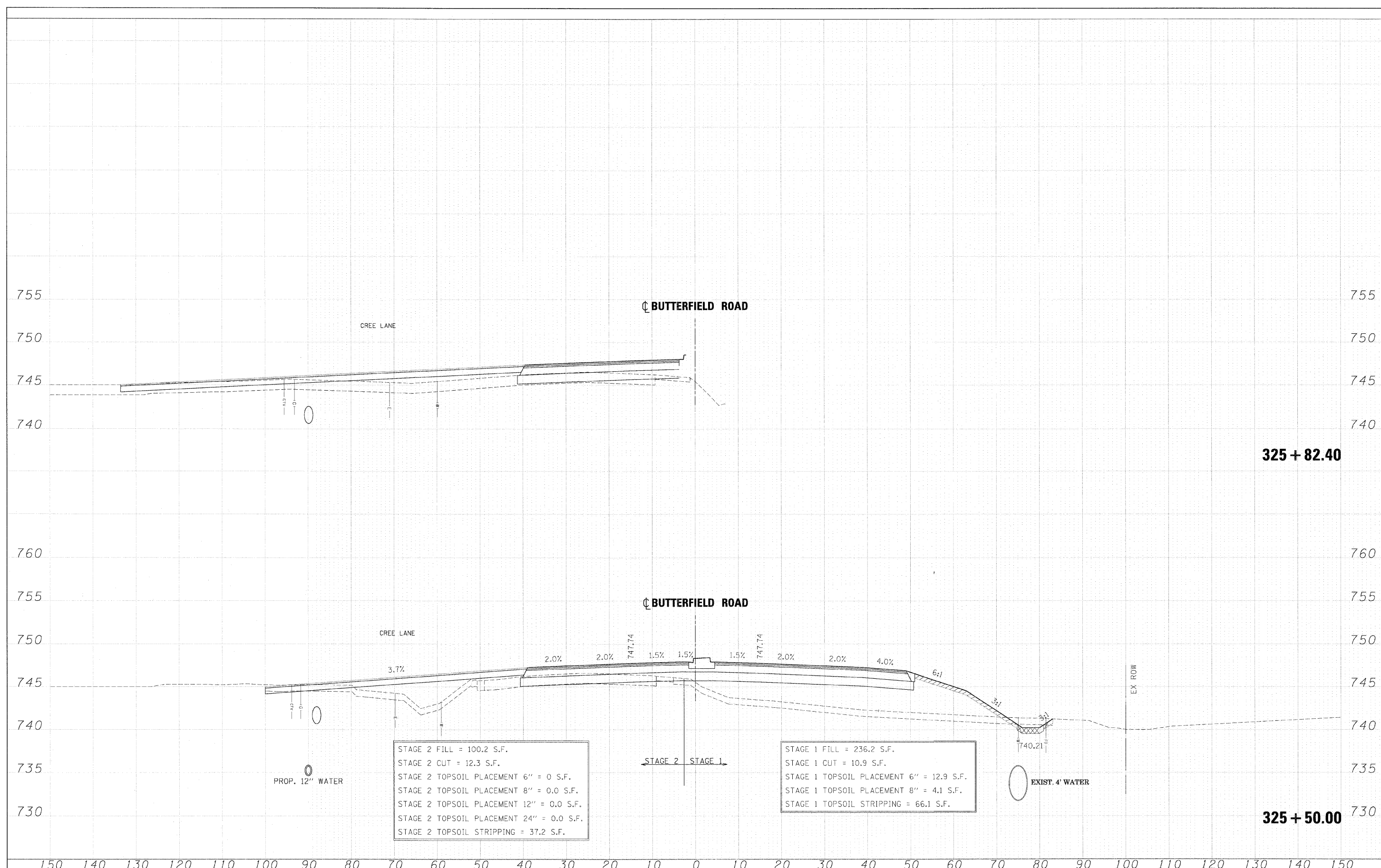


FINAL SURVEY	REVISIONS	DATE
NOTE BOOK	PLOTTED	BY
AREAS CHECKED	TEMPLATE	
NO.	AREAS CHECKED	

ORIGINAL SURVEY	REVISIONS	DATE
NOTE BOOK	PLOTTED	BY
AREAS CHECKED	TEMPLATE	
NO.	AREAS CHECKED	



STAGE 2 FILL = 100.2 S.F.
 STAGE 2 CUT = 12.3 S.F.
 STAGE 2 TOPSOIL PLACEMENT 6" = 0.0 S.F.
 STAGE 2 TOPSOIL PLACEMENT 8" = 0.0 S.F.
 STAGE 2 TOPSOIL PLACEMENT 12" = 0.0 S.F.
 STAGE 2 TOPSOIL PLACEMENT 24" = 0.0 S.F.
 STAGE 2 TOPSOIL STRIPPING = 37.2 S.F.

STAGE 1 FILL = 236.2 S.F.
 STAGE 1 CUT = 10.9 S.F.
 STAGE 1 TOPSOIL PLACEMENT 6" = 12.9 S.F.
 STAGE 1 TOPSOIL PLACEMENT 8" = 4.1 S.F.
 STAGE 1 TOPSOIL STRIPPING = 66.1 S.F.

FILE NAME = ...ND162419-X5-56.DGN	DESIGNED - JMM	REVISED -	benesch STATE OF ILLINOIS DEPARTMENT OF TRANSPORTATION	CROSS SECTIONS - IL RTE 56		F.A. RTE. 365	SECTION (57 & 58)WRS-2	COUNTY DUPAGE	TOTAL SHEETS 681	SHEET NO. 530	
USER NAME = tbbjank	CHECKED - RMT	REVISED -		SCALE:	SHEET NO. 88 OF 189 SHEETS	STA. 325+50.00 TO STA. 325+82.40	CONTRACT NO. 62419		ILLINOIS FED. AID PROJECT		
PLOT DATE = 12/7/2010	DATE - 12/6/10	REVISED -									