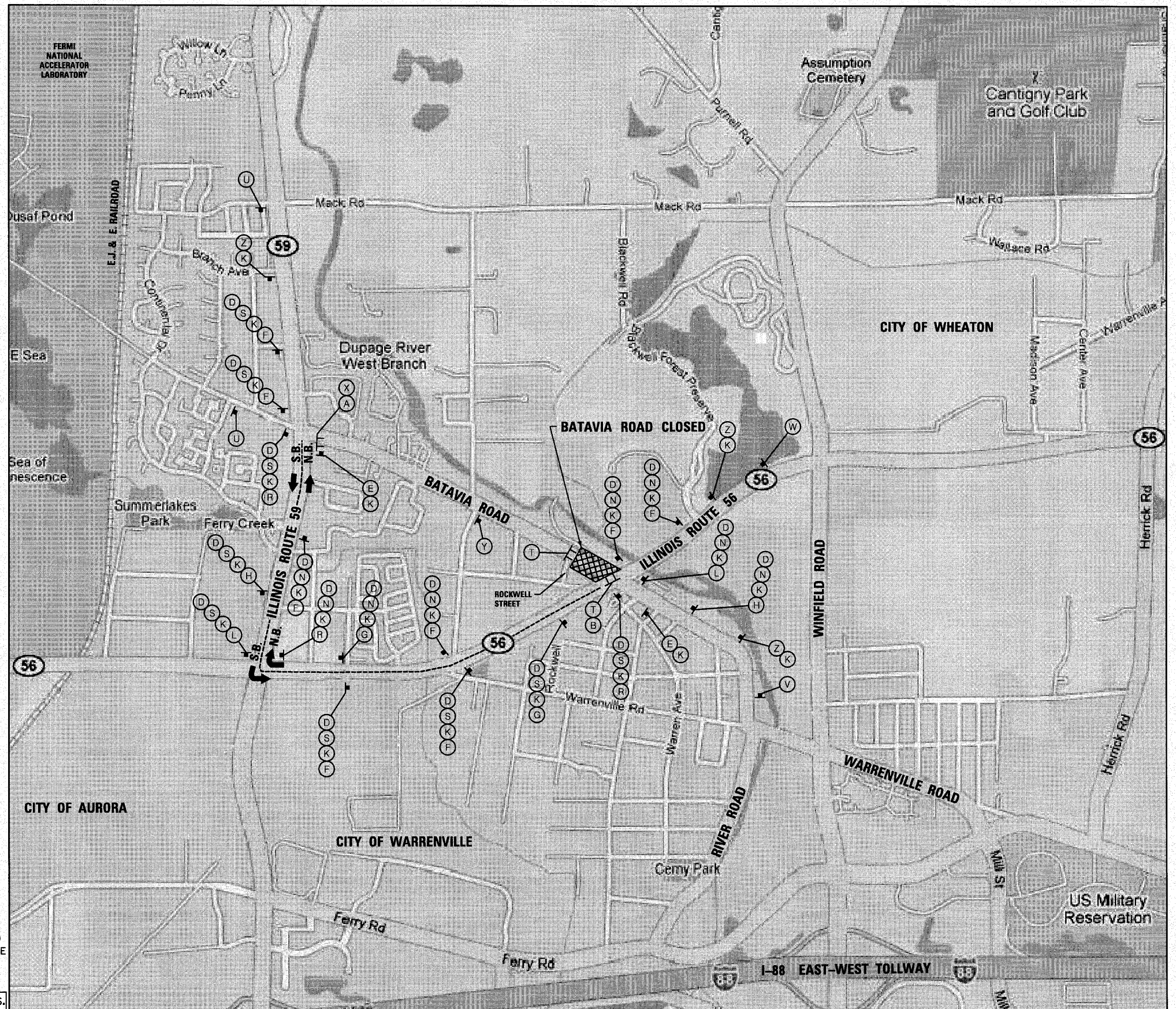


NOTES:

1. USE THIS DETOUR PLAN IN CONJUNCTION WITH DISTRICT ONE STANDARD DETAILS - DETOUR SIGNING FOR CLOSING STATE HIGHWAYS.
2. ALL SIGN DIMENSIONS ARE SHOWN IN INCHES.
3. ALL DETOUR SIGNS ARE TO BE INCLUDED IN THE COST OF "TRAFFIC CONTROL AND PROTECTION FOR TEMPORARY DETOUR".
4. ONE VARIABLE MESSAGE SIGN SHALL BE PLACED ON SOUTHBOUND BATAVIA ROAD AND ONE ON NORTHBOUND BATAVIA ROAD AT LEAST ONE (1) WEEK PRIOR TO THE CLOSING OF BATAVIA ROAD. BATAVIA ROAD SHALL ONLY BE CLOSED FOR A MAXIMUM OF THREE (3) WEEKS.
5. THE CONTRACTOR SHALL MAINTAIN ACCESS TO ROCKWELL STREET AT ALL TIMES.



FILE NAME = D162420-shd-detour-2.dgn
 PLOT DATE = 12/2/2010
 PLOT SCALE = 50.000' / IN.

CHRISTIAN-ROGE & ASSOCIATES, INC.
 ENGINEERS-PLANNERS-SURVEYORS
 211 WEST WACKER DRIVE
 CHICAGO, ILLINOIS 60606
 PHONE: (312)372-2023 FAX: (312)372-5274

DESIGNED - S.J.P.	REVISED -
DRAWN - B.K.	REVISED -
CHECKED - M.P.	REVISED -
DATE - DECEMBER 3, 2010	REVISED -

STATE OF ILLINOIS
DEPARTMENT OF TRANSPORTATION

BATAVIA ROAD DETOUR PLAN - STAGE II
IL RTE. 56

SCALE: NONE SHEET NO. 1 OF 1 SHEETS STA. TO STA.

F.A.P. RTE.	SECTION	COUNTY	TOTAL SHEETS	SHEET NO.
365	(58&59) WRS-3	DUPAGE	466	58
				CONTRACT NO. 62420
FED. ROAD DIST. NO. 1 ILLINOIS FED. AID PROJECT				