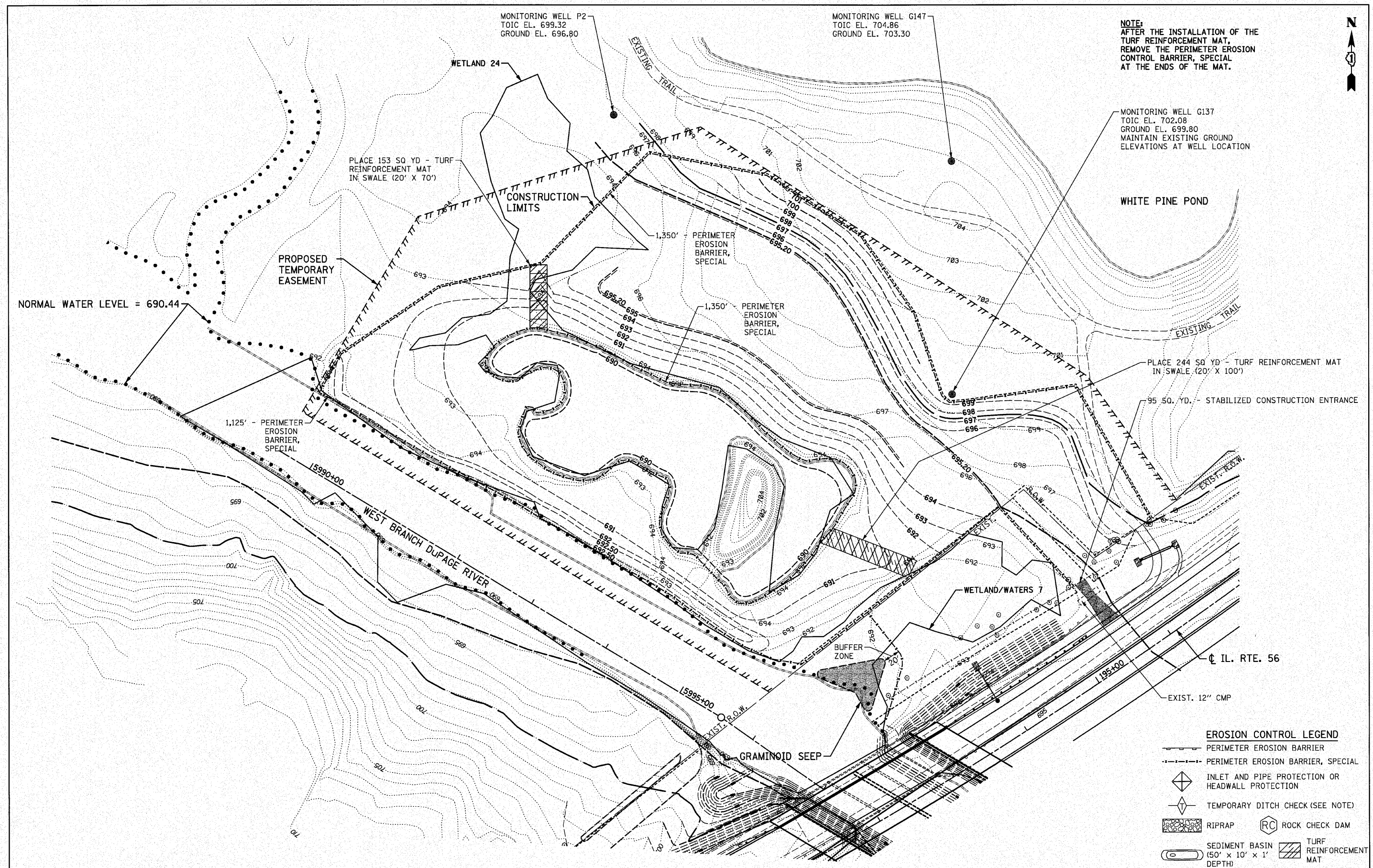




NOTE:
 AFTER THE INSTALLATION OF THE
 TURF REINFORCEMENT MAT,
 REMOVE THE PERIMETER EROSION
 CONTROL BARRIER, SPECIAL
 AT THE ENDS OF THE MAT.



NORMAL WATER LEVEL = 690.44

MONITORING WELL G137
 TOIC EL. 702.08
 GROUND EL. 699.80
 MAINTAIN EXISTING GROUND
 ELEVATIONS AT WELL LOCATION

MONITORING WELL P2
 TOIC EL. 699.32
 GROUND EL. 696.80

MONITORING WELL G147
 TOIC EL. 704.86
 GROUND EL. 703.30

WHITE PINE POND

PLACE 244 SQ YD - TURF REINFORCEMENT MAT
 IN SWALE (20' X 100')

PLACE 153 SQ YD - TURF
 REINFORCEMENT MAT
 IN SWALE (20' X 70')

95 SQ. YD. - STABILIZED CONSTRUCTION ENTRANCE

PROPOSED
 TEMPORARY
 EASEMENT

CONSTRUCTION
 LIMITS

1,350' PERIMETER
 EROSION
 BARRIER,
 SPECIAL

1,350' PERIMETER
 EROSION
 BARRIER,
 SPECIAL

1,125' - PERIMETER
 EROSION
 BARRIER,
 SPECIAL

WEST BRANCH DUPAGE RIVER

WETLAND/WATERS 7

BUFFER
 ZONE

GRAMINOID SEEP

IL. RTE. 56

EXIST. 12" CMP

EROSION CONTROL LEGEND

- PERIMETER EROSION BARRIER
- PERIMETER EROSION BARRIER, SPECIAL
- INLET AND PIPE PROTECTION OR HEADWALL PROTECTION
- TEMPORARY DITCH CHECK (SEE NOTE)
- RIPRAP
- ROCK CHECK DAM
- SEDIMENT BASIN (50' x 10' x 1' DEPTH)
- TURF REINFORCEMENT MAT

FILE NAME = D162420-shr-ecrestoration.dgn
 PLOT DATE = 12/2/2010
 PLOT SCALE = 50.000' / 1"

CHRISTIAN-ROGE & ASSOCIATES, INC.
 ENGINEERS-PLANNERS-SURVEYORS
 211 WEST WACKER DRIVE
 CHICAGO, ILLINOIS 60606
 PHONE: (312)372-2023 FAX: (312)372-5274

DESIGNED - S.J.P.	REVISED -
DRAWN - A.C.S.	REVISED -
CHECKED - M.P.	REVISED -
DATE - DECEMBER 3, 2010	REVISED -

**STATE OF ILLINOIS
 DEPARTMENT OF TRANSPORTATION**

**EROSION AND SEDIMENT CONTROL PLAN
 WEST BRANCH DUPAGE RIVER RESTORATION SITE**

SCALE: 1" = 50' SHEET NO. 1 OF 1 SHEETS STA. TO STA.

F.A.P. RTE.	SECTION	COUNTY	TOTAL SHEETS	SHEET NO.
365	(58&59) WRS-3	DUPAGE	466	80
				CONTRACT NO. 62420
FED. ROAD DIST. NO. 1 ILLINOIS FED. AID PROJECT				