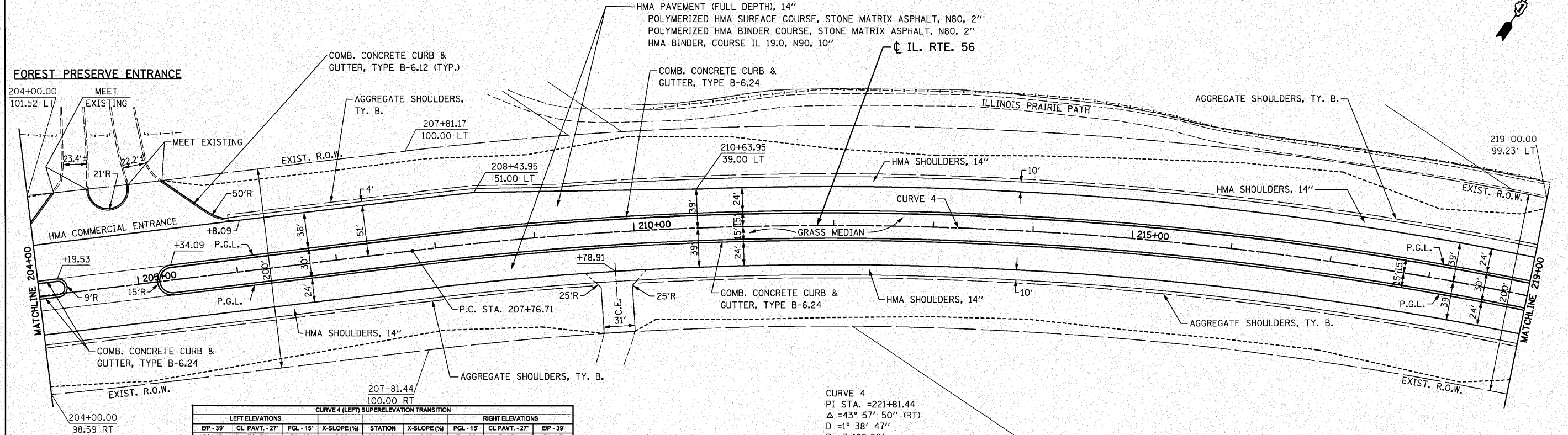
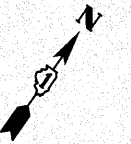


SE 1/4 SECTION 26 - 39 - 9
CITY OF WARRENVILLE



CURVE 4 (LEFT) SUPERELEVATION TRANSITION

LEFT ELEVATIONS				RIGHT ELEVATIONS				
EP - 39'	CL PAVT. - 27'	PGL - 15'	X-SLOPE (%)	STATION	X-SLOPE (%)	PGL - 15'	CL PAVT. - 27'	EP - 39'
714.47	714.71	714.95	-2.00	206+25.21	-2.00	714.95	714.71	714.47
715.07	715.23	715.39	-1.34	206+50.00	-2.00	715.39	715.15	714.91
715.67	715.75	715.83	-0.68	206+75.00	-2.00	715.83	715.59	715.35
716.28	716.28	716.28	-0.02	207+00.00	-2.00	716.28	716.04	715.80
716.29	716.29	716.29	0.00	207+00.71	-2.00	716.29	716.05	715.81
716.87	716.80	716.72	0.64	207+25.00	-2.00	716.72	716.48	716.24
717.47	717.32	717.16	1.31	207+50.00	-2.00	717.16	716.92	716.68
718.07	717.84	717.60	1.97	207+75.00	-2.00	717.60	717.36	717.12
718.10	717.86	717.62	2.00	207+76.21	-2.00	717.62	717.38	717.14
718.11	717.87	717.63	2.01	207+76.71	-2.01	717.63	717.39	717.15
718.67	718.36	718.04	2.63	208+00.00	-2.63	718.04	717.72	717.41
719.02	718.66	718.30	3.02	208+14.71	-3.02	718.30	717.94	717.68

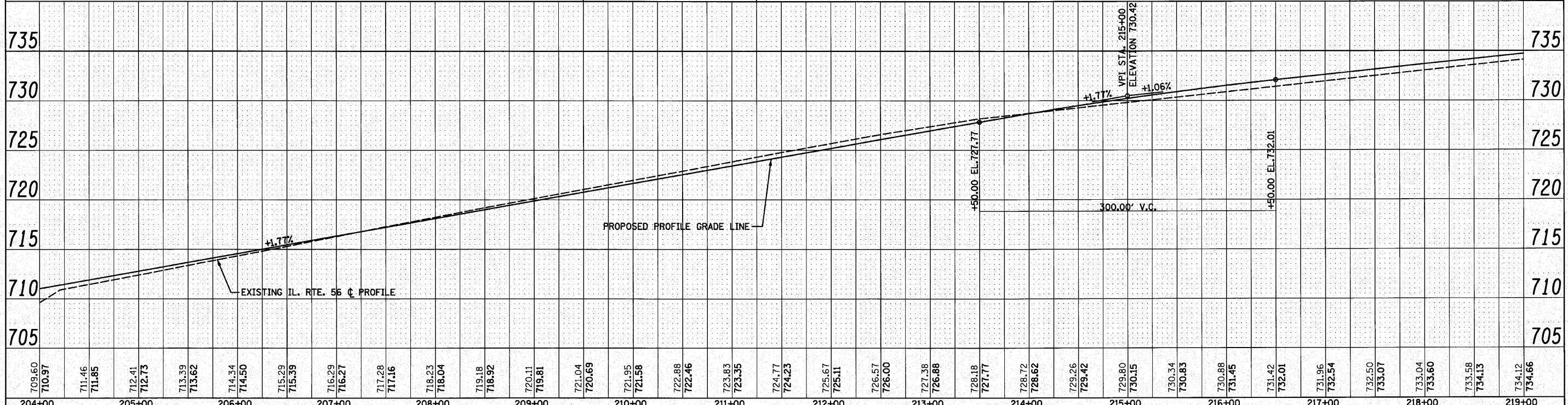
NE 1/4 SECTION 35 - 39 - 9

CRA 20 ELEV. 721.77
STA. 210+85.15 68.01' LT.
1/2" IRON PIPE

CURVE 4
PI STA. =221+81.44
Δ =43° 57' 50" (RT)
D =1° 38' 47"
R =3,480.00'
T =1,404.73'
L =2,670.25'
E =272.82'
e =3.02%
T.R. =75.49'
S.E. RUN =114'
P.C. STA. =207+76.71
P.T. STA. =234+46.96

NOTES:
1. FOR FOREST PRESERVE ENTRANCE INTERSECTION, SEE INTERSECTION DETAILS SHEET.

CP 105 ELEV. 731.40
STA. 217+42.20 33.98' RT.
3/4" IRON PIPE W/CAP



FILE NAME = 0162420-sht-plnprf09.dgn PLOT DATE = 12/2/2010 PLOT SCALE = 50.000' / IN.	CHRISTIAN-ROCHE & ASSOCIATES, INC. ENGINEERS-PLANNERS-SURVEYORS 211 WEST WACKER DRIVE CHICAGO, ILLINOIS 60606 PHONE: (312)372-2023 FAX: (312)372-5274	DESIGNED - S.J.P. DRAWN - B.K. CHECKED - M.P. DATE - DECEMBER 3, 2010	REVISED - REVISED - REVISED - REVISED -	STATE OF ILLINOIS DEPARTMENT OF TRANSPORTATION	ROADWAY PLAN AND PROFILE IL. RTE. 56	SCALE: 1" = 50' SHEET NO. 9 OF 12 SHEETS STA. 204+00 TO STA. 219+00	SECTION COUNTY TOTAL SHEETS NO. 365 (58&59) WRS-3 DuPAGE 466 98 CONTRACT NO. 62420
---	---	--	--	---	---	---	--