

SOIL MANAGEMENT

AS THE SOILS ARE HYDRIC WITHIN THE PROPOSED WETLAND MITIGATION AREA NO OUTSIDE SOILS ARE NEEDED. ALL EXCAVATION WORK SHALL BE EXECUTED DURING DRY WEATHER. THE CONTRACTOR SHALL TAKE MEASUREMENTS TO MINIMIZE OVER WORKING AND COMPACTION OF PLACED SOIL. EQUIPMENT USED FOR EXCAVATION SHALL BE LOW GROUND PRESSURE (X5 PSI) EQUIPMENT (E.G. CATERPILLAR 287B OR EQUIVALENT). IN ORDER TO ELIMINATE POTENTIAL INTRODUCTION OF INVASIVE OR EXOTIC SPECIES, ALL EQUIPMENT USED ON THE PLANTING SITE SHALL BE FREE OF MUD AND OR PLANT MATERIAL. THIS INCLUDES TIRES, MOWER DECKS, UNDERCARRIAGE, BUCKETS, ETC.

COMPENSATORY STORAGE AREA: AFTER FINAL ROUGH GRADING HAD BEEN COMPLETED, 6 INCHES OF TOPSOIL (PAY ITEM: TOPSOIL FURNISH AD PLACE, 6") SHALL BE PLACED WITH 2 INCHES OF COMPOST (PAY ITEM: COMPOST FURNISH AND PLACE, 2") PLACED ON TOP OF THE TOPSOIL. COMPOST SHALL BE SLIGHTLY ROTOTILLED INTO THE TOPSOIL.

FINAL GRADE SHALL CONFORM TO ELEVATIONS AND CONTOURS DELINEATED ON THE GRADING PLAN. PRIOR TO SEEDING, THE SOIL SURFACE SHALL BE ROUGH RAKED TO ENHANCE RETENTION OF SURFACE WATER. SEEDING FOR THIS AREA WILL BE ACCORDING TO THE PLANTING ZONE ELEVATIONS AS FOLLOWS:

(ZONE 1)	SEEDING, SEDGE MEADOW & EMERGENT	ELEVATION 690 TO 690.5
(ZONE 2)	SEEDING, WET PRAIRIE	ELEVATION 690.5 TO 694.8
(ZONE 3)	SEEDING, MESIC PRAIRIE	ELEVATION 692.5 AND ABOVE

THE SEEDING, WET PRAIRIE AND SEEDING, MESIC PRAIRIE IN SOME AREAS WILL OVERLAP. AREAS SEEDING WITH SEEDING, SEDGE MEADOW & EMERGENT; WET PRAIRIE; AND MESIC PRAIRIE SHALL BE BLANKETED WITH HEAVY DUTY EROSION CONTROL BLANKET (SPECIAL). SEE SPECIAL PROVISION FOR HEAVY DUTY EROSION CONTROL BLANKET (SPECIAL). SEDGE MEADOW PLUGS WILL ALSO BE PLANTED IN ZONE 1 IN GROUPS. SEE SPECIAL PROVISION PLANTING WETLAND, SEDGE MEADOW PLUGS. SEE SCHEDULE OF LANDSCAPE ITEMS FOR TYPE OF PLUGS, QUANTITIES, AND PLANTING DEPTH FOR EACH PLANT SPECIES.

SUBMERGED REEF

THE REEF WILL BE EXCAVATED DOWN TO A ROUGH GRADE ELEVATION OF APPROXIMATELY 6" TO 18" BELOW ANTICIPATED NORMAL WATER LEVEL (NWL). THE DESIRED FINAL ELEVATION WITH SOME SOIL PLACEMENT IS TARGETED AT 0" TO 12" BELOW NWL. AFTER ROUGH EXCAVATION OF THE SUBMERGED REEF, THE EXCAVATOR OPERATOR SHALL DUMP A SUFFICIENT NUMBER OF PILES OF TOPSOIL (PAY ITEM: TOPSOIL FURNISH AND PLACE, 24" AND NO COMPOST) ON THE REEF. THE PILES SHALL BE GENTLY MASSAGED IN THE WATER CAUSING THE PILES OF TOPSOIL TO DISSIPATE IN HEIGHT LEAVING THE TOP OF THE PILE AT 0"/NWL. ONCE THIS IS COMPLETED, THIS SHALL RESULT IN THE GRADIENT OF ELEVATION BETWEEN PILES THAT IS SOUGHT AS WELL AS VARIATION IN SUBSTRATE FROM SOIL TO GRAVEL.

THE SUBMERGED REEF WILL NOT BE SEEDING, ONLY PLANTED WITH SEDGE MEADOW PLUGS. SEE SPECIAL PROVISION PLANTING WETLAND, SEDGE MEADOW PLUGS. SEE SCHEDULE OF LANDSCAPE ITEMS FOR TYPE OF PLUGS, QUANTITIES, AND PLANTING DEPTH FOR EACH PLANT SPECIES.

PLANTING PLAN

THE COVER CROP MATRIX WILL BE PLANTED THROUGHOUT THE WETLAND MITIGATION AREAS IMMEDIATELY AFTER GRADING TO PREVENT EROSION IF CONDITIONS ARE NOT CONDUCIVE FOR NATIVE SPECIES SEEDING. PERMANENT NATIVE SPECIES SHALL BE DORMANT SEEDING DURING THE FALL/WINTER MONTHS OR DURING THE FIRST AVAILABLE GROWING SEASON AT THE APPROPRIATE TIME AND CONDITIONS FOR SUCH PLANTING. ALL SEEDING SHALL BE COMPLETED ACCORDING TO SPECIAL PROVISIONS. THE PREFERRED METHOD OF SEED INSTALLATION SHALL BE THE RANGELAND TYPE NATIVE GRASS AND WILDFLOWER SEED DRILL/BROADCAST METHOD, EXCEPT WHERE SLOPES ARE STEEPER THAN 3:1, SOIL IS SATURATED, OR SIZE CONSTRAINTS PROHIBIT THE USE OF A RANGELAND DRILL.

WHERE SLOPES, SATURATED SOILS, OR SIZE CONSTRAINTS PROHIBIT THE USE OF A DRILL SEEDER, THE BROADCAST OR HYDROSEED METHODS MAY BE USED WITH APPROVAL FROM THE WETLAND CONSULTANT. IF A BROADCAST METHOD OF SEEDING IS USED (INCLUDING HYDROSEEDING), THE FOLLOWING REQUIREMENTS SHALL BE FOLLOWED. THE AMOUNT OF SEED PER ACRE WILL BE DOUBLE THE INDICATED DRILL SEED RATE. FURTHER, BROADCAST-APPLIED SEED WILL BE EITHER ROLLER OR HAND RAKED INTO THE SOIL TO ENSURE GOOD SOIL-SEED CONTACT. WITHIN 12 HOURS, IF CONDITIONS PERMIT OR AS SOON THEREAFTER AS PRACTICAL, ALL SEEDING AREAS SHALL BE ROLLED AT RIGHT ANGLES TO THE RUNOFF WITH AN APPROVED TYPE ROLLER OR CULTIPACKER TO FIRM THE SEEDBED AND PLACE THE SEED IN CONTACT WITH THE SOIL.

THE PROPOSED SPECIES, SPECIFICATIONS, AND DRILL SEEDING RATES FOR THE AREAS TO BE SEEDING ARE PROVIDED IN THE SPECIAL PROVISIONS: SEEDING, SEDGE MEADOW & EMERGENT; SEEDING, WET PRAIRIE; AND SEEDING, MESIC PRAIRIE.

PLUGS SHALL BE PLANTED ON 24" CENTERS AFTER MAY 1ST WHEN FROST IS NO LONGER LIKELY AT THE APPROPRIATE TIME AND CONDITIONS FOR SUCH PLANTINGS. SEE SPECIAL PROVISION PLANTING WETLAND, SEDGE MEADOW PLUGS. SEE SCHEDULE OF LANDSCAPE ITEMS FOR TYPE OF PLUGS, QUANTITIES, AND PLANTING DEPTH FOR EACH PLANT SPECIES.

GOOSE GRID BARRIER SHALL BE INCLUDED IN THE COST OF PERENNIAL PLANTS, SEDGE MEADOW TYPE, PLUG.

FILE NAME = 0162420-shr-drawn23.dgn
 PLOT DATE = 12/3/2010
 PLOT SCALE = 58.00000' / IN.



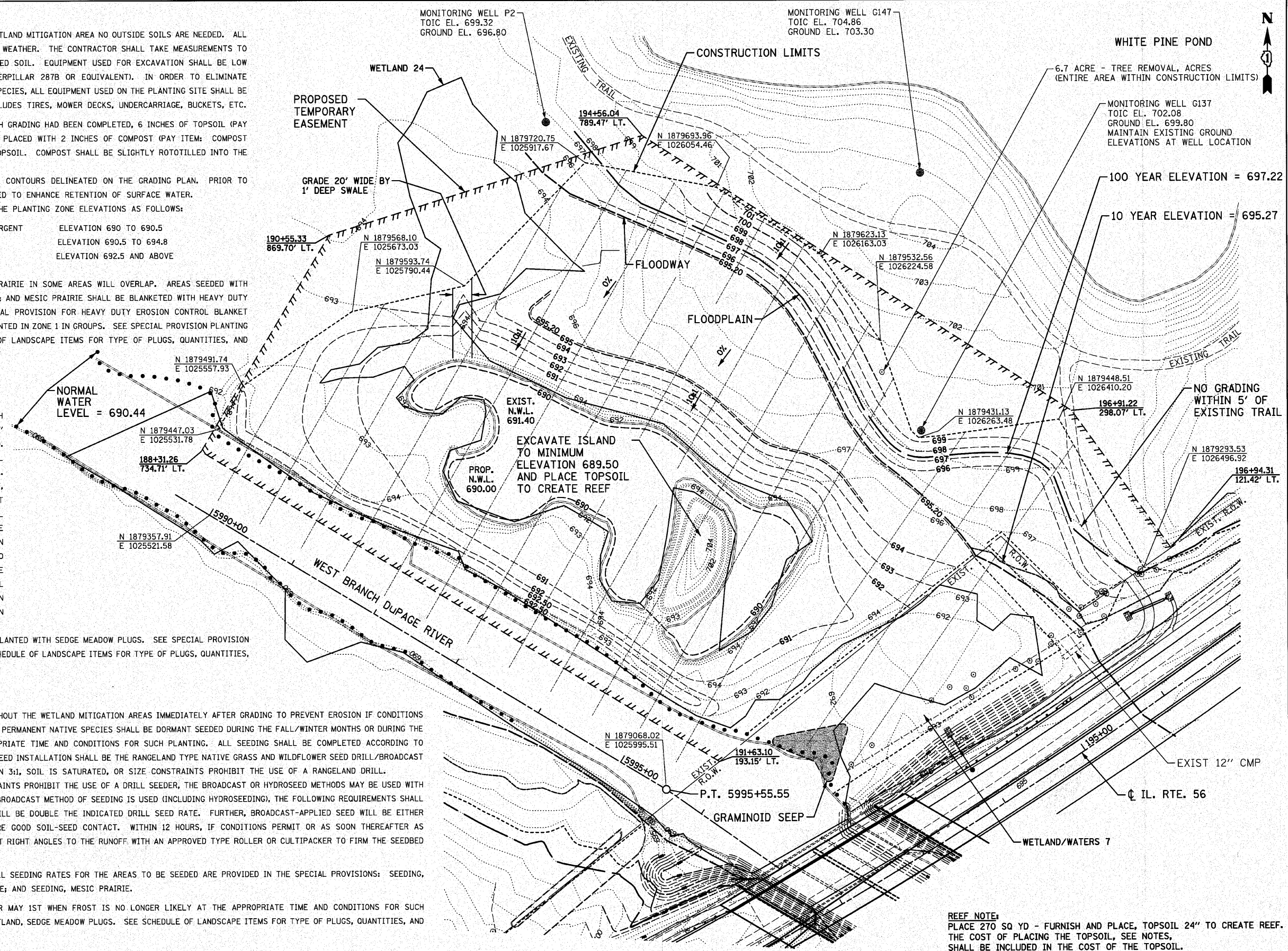
DESIGNED - S.J.P.	REVISED -
DRAWN - A.C.S.	REVISED -
CHECKED - M.P.	REVISED -
DATE - DECEMBER 3, 2010	REVISED -

**STATE OF ILLINOIS
 DEPARTMENT OF TRANSPORTATION**

**SITE PLAN - WEST BRANCH DuPAGE RIVER
 RIVER RESTORATION SITE**

SCALE: 1" = 50' SHEET NO. 1 OF 1 SHEETS STA. TO STA.

F.A.P. RTE.	SECTION	COUNTY	TOTAL SHEETS	SHEET NO.
365	(58&59) WRS-3	DUPAGE	466	107
FED. ROAD DIST. NO. 1 ILLINOIS FED. AID PROJECT			CONTRACT NO. 62420	



REEF NOTE:
 PLACE 270 SQ YD - FURNISH AND PLACE, TOPSOIL 24" TO CREATE REEF. THE COST OF PLACING THE TOPSOIL, SEE NOTES, SHALL BE INCLUDED IN THE COST OF THE TOPSOIL.